



U.S. Department
of Transportation
**Federal Aviation
Administration**

Alaskan Region Airports Division

222 W. 7th Avenue, #14
Anchorage, Alaska 99513-7587
Tel. (907) 271-5438 / Fax (907) 271-2851

July 11, 2025

Tadd Isaacson, P.E.
Design Squad Leader
State of Alaska DOT&PF
4111 Aviation Ave.
Juneau, AK 99801

Dear Mr. Isaacson:

**Togiak Airport, Togiak, Alaska
As-Built Airport Layout Plan
(Original ALP Airspace No. 2018-AAL-25-NRA)**

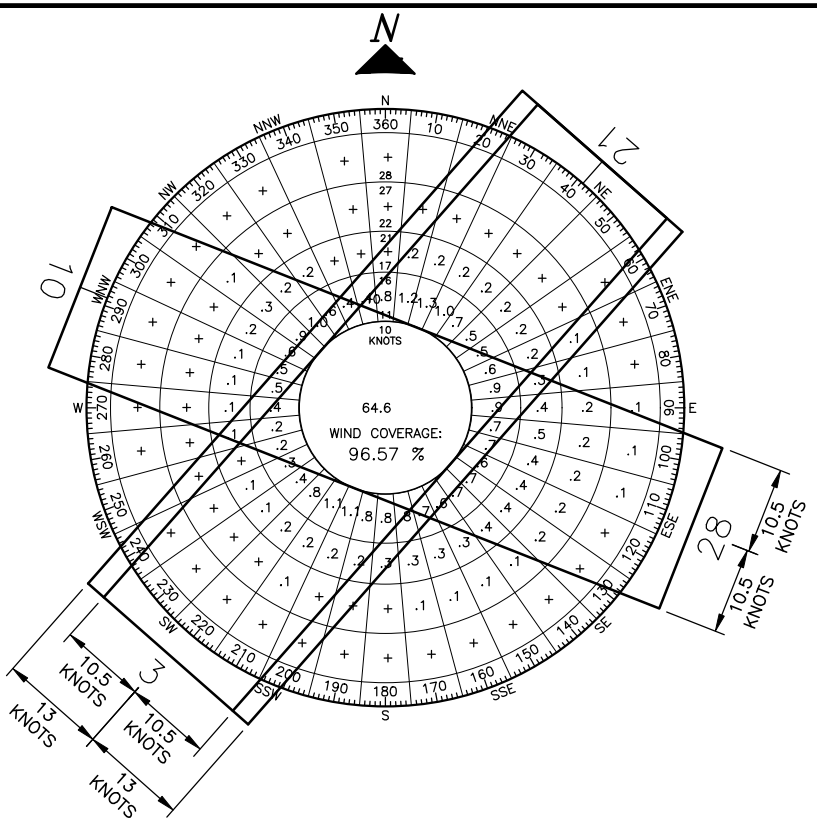
We have completed our review of the Togiak Airport As-Built Airport Layout Plan (ALP) dated June 2025 and submitted on June 25, 2025, and find it acceptable for documenting the existing conditions of the airport.

Please attach this letter to the enclosed As-Built ALP and retain it in your files for future reference.

Sincerely,

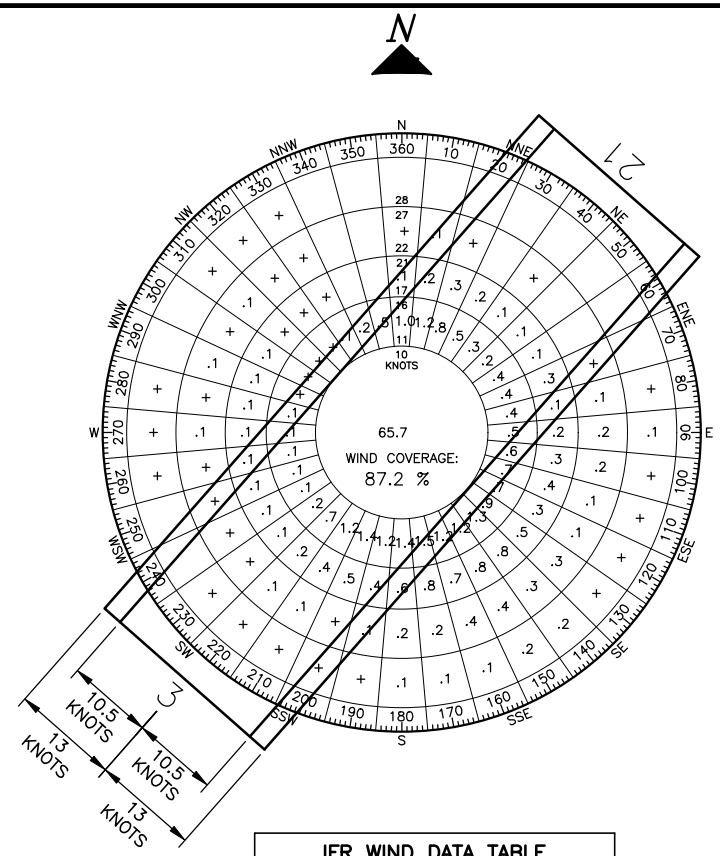
Jenelle Brinkman, P.E.
Lead Civil Engineer
Airports Division

Date Plotted: 11/25/2019 10:50 AM
 Layout Name: DWG
 File Name: Z:\Projects\2019\01_001_C_Togiak_Airport_Resources\Engineering\Civil\ACAD\ALP\ALP-109-01-2_COVER-DATA.dwg
 Designed By: MM
 Drawn By: VIK:AA
 Checked By: CIB



RUNWAY	10.5 kt	13 kt
3/21	82.06%	88.12%
10/28	84.30%	N/A
COMBINED	96.57%	88.12%

SOURCE: ADIP - WIND DATA
 STATION: TOGIAK
 PERIOD: 2014-2023



RUNWAY	10.5 kt	13 kt
3/21	81.59%	87.20%
10/28	N/A	N/A
COMBINED	81.59%	87.20%

SOURCE: ADIP - WIND DATA
 STATION: TOGIAK
 PERIOD: 2014-2023

ITEM	EXISTING	ULTIMATE
ICAO IDENTIFIER	PATG	PATG
NATIONAL AIRPORT IDENTIFIER	TOG	TOG
FAA SITE NUMBER	50764.4*A	50764.4*A
AIRPORT ELEVATION NAVD88	18.6	18.6
AIRPORT AAC-ADG	A-II	A-II
CRITICAL AIRCRAFT	A-II	A-II
MEAN MAX. TEMPERATURE, HOTTEST MONTH	63.0°F, JULY	63.0°F, JULY
MAGNETIC DECLINATION, YEAR, RATE OF CHANGE	10°15' E, 2025, 0°15' W PER YEAR	
AIRPORT AND TERMINAL NAVIGATION AIDS	NDB, GPS, DME, ROTATING BEACON	NDB, GPS, DME, ROTATING BEACON
MISCELLANEOUS FACILITIES	WINDCONE, WEATHER STATION	WINDCONE, WEATHER STATION
NPIAS SERVICE LEVEL	GENERAL AVIATION	COMMERCIAL SERVICE
STATE EQUIVALENT SERVICE ROLE	COMMUNITY OFF-ROAD	COMMUNITY OFF-ROAD

ITEM	EXISTING	ULTIMATE
RUNWAY TYPE (UTILITY OR OTHER THAN UTILITY)	OTHER THAN UTILITY	OTHER THAN UTILITY
FAR PART 77 APPROACH CATEGORY (V, NPI, P)	NPI / NPI	NPI / NPI
VISIBILITY MINIMUM	≥1 SM / ≥1 SM	≥1 SM / ≥1 SM
FAR PART 77 APPROACH SURFACE SLOPE	34:1 / 34:1	34:1 / 34:1
THRESHOLD SITING SURFACE	20:1 / 20:1	20:1 / 20:1
RUNWAY DESIGN CODE	A-II-5000	A-II-5000
APPROACH REFERENCE CODE	D-IV-5000 AND D-V-5000	D-IV-5000 AND D-V-5000
DEPARTURE REFERENCE CODE	D-IV AND D-V	D-IV AND D-V
RUNWAY SURFACE	GRAVEL	ASPHALT
PAVEMENT STRENGTH (SW,DW) x1,000 LBS	N/A	40/60
DESIGN GROUP OR AIRCRAFT IF > 60,000 lbs	N/A	N/A
MAXIMUM ELEVATION (NAVD88)	18.6	18.6
TOUCHDOWN ZONE ELEVATION NAVD88	18.6 / 18.5	18.6 / 18.5
EFFECTIVE GRADE	0.007%	0.007%
MEAN GEODETIC BEARING	N 41°21'59" E	N 41°21'59" E
RUNWAY DIMENSIONS	100 x 4400	100 x 4400
RUNWAY SAFETY AREA (RSA)	150 x 5000	150 x 5000
RSA LENGTH BEYOND RUNWAY ENDS	300 / 300	300 / 300
RUNWAY OBJECT FREE AREA (ROFA)	500 x 5000	500 x 5000
ROFA LENGTH BEYOND RUNWAY ENDS	300 / 300	300 / 300
RUNWAY OBSTACLE FREE ZONE (OFZ)	400 x 4800	400 x 4800
RUNWAY PROTECTION ZONE (RPZ)	500 x 700 x 1000	500 x 700 x 1000
RUNWAY LIGHTING	MIRL	MIRL
RUNWAY MARKING TYPE	N/A	NON-PRECISION
RUNWAY NAVIGATIONAL AIDS	PAPI / PAPI	PAPI / PAPI
AERONAUTICAL SURVEY TYPE REQUIRED	NVG	NVG
DEPARTURE SURFACE	YES / YES	YES / YES

PID	DESIGNATION	LATITUDE	LONGITUDE	ELLIPSOID HEIGHT	NORTHING	EASTING	ELEVATION	DESCRIPTION
DP5954	TOG A	59°03'10.66" N	160°23'42.12" W	59.42	1849414.23	1942546.79	15.03	PACS
DP5955	TOG B	59°02'59.60" N	160°24'04.43" W	59.92	1848263.77	1941407.11	15.52	SACS
DP5956	TOG C	59°03'27.79" N	160°23'31.59" W	58.34	1851166.23	1943055.38	13.96	SACS

NOTES

- THIS DRAWING IS A COMPILATION OF GROUND SURVEY AND AERIAL MAPPING DATA COLLECTED DURING THE 2014 SEASON IN SUPPORT OF FAA AERONAUTICAL SURVEY #158433, AND DATA FROM A POST-CONSTRUCTION SURVEY FOR PROJECT CFAPTO0276 COLLECTED IN THE SUMMER OF 2023.
- THE HORIZONTAL COORDINATE SYSTEM FOR THIS ALP IS NAD 83 (2011) (EPOCH 2010) ALASKA STATE PLANE ZONE 7, U.S. FEET. THE VERTICAL DATUM FOR THIS ALP IS NAVD 88 (GEOID 12A).
- GROUND SURVEY WAS PERFORMED BY STANTEC JUNE 4-8, 2014. AERIAL MAPPING WAS PERFORMED BY KODIAK MAPPING USING IMAGERY COLLECTED JUNE 28, 2014. A POST-CONSTRUCTION FIELD SURVEY WAS PERFORMED BY R&M CONSULTANTS, INC. COLLECTED JULY 28-31, 2023.

ITEM	EXISTING LATITUDE	EXISTING LONGITUDE	EXISTING ELEVATION	ULTIMATE LATITUDE	ULTIMATE LONGITUDE	ULTIMATE ELEVATION
ARP	59°03'13" N	160°23'48" W		59°03'13" N	160°23'48" W	
THRESHOLD RW 3	59°02'54.46" N	160°24'20.86" W	18.5	59°02'54.46" N	160°24'20.86" W	18.5
THRESHOLD RW 21	59°03'26.98" N	160°23'25.26" W	18.3	59°03'26.98" N	160°23'25.26" W	18.3
THRESHOLD RW 10	59°03'24.03" N	160°23'36.41" W	16.1	59°03'24.03" N	160°23'36.41" W	16.1
THRESHOLD RW 28	59°03'20.48" N	160°23'18.94" W	16.7	59°03'20.48" N	160°23'18.94" W	16.7

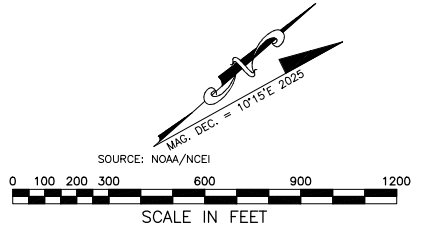
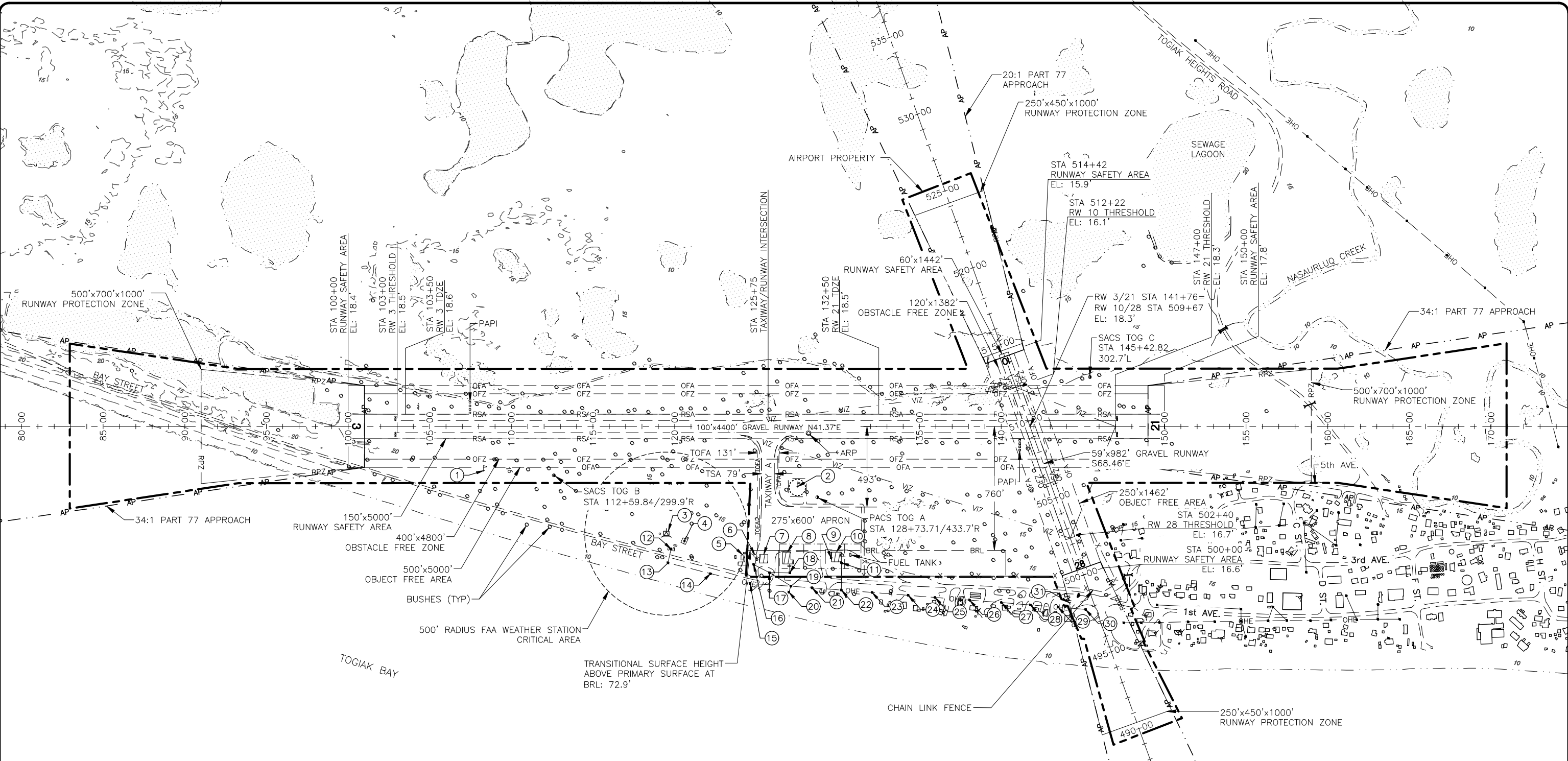
ITEM	STANDARD	EXISTING	ULTIMATE
RUNWAY 3/21 THRESHOLD LIGHTS	INBOARD (2-10 OFFSET)	INBOARD (0 OFFSET)	INBOARD (2-10 OFFSET)
SEWAGE LAGOON SEPARATION DISTANCE	5,000	1,100	1,100
RW 10 RSA LENGTH BEYOND RUNWAY END	240	220	240
RW 3/21 WIDTH	75	100	100
TAXIWAY WIDTH	35 (TDG II)	70	70
TAXIWAY SAFETY AREA	79 (ADG II)	110	110

ITEM	EXISTING/ULTIMATE						
	WIDTH	SHLDR	LENGTH	TSA	TOFA	TESM	LIGHTS
TW A	70	N/A	425	110	124 (ADG II)	7.5	MITL

ITEM	EXISTING	ULTIMATE
RUNWAY TYPE (UTILITY OR OTHER THAN UTILITY)	UTILITY	UTILITY
FAR PART 77 APPROACH CATEGORY (V, NPI, P)	V / V	V / V
VISIBILITY MINIMUM	VISUAL / VISUAL	VISUAL / VISUAL
FAR PART 77 APPROACH SURFACE SLOPE	20:1 / 20:1	20:1 / 20:1
THRESHOLD SITING SURFACE	20:1 / 20:1	20:1 / 20:1
RUNWAY DESIGN CODE	A-I(S)-VIS	A-I(S)-VIS
APPROACH REFERENCE CODE	D-IV-VIS	D-IV-VIS
DEPARTURE REFERENCE CODE	D-IV	D-IV
RUNWAY SURFACE	GRAVEL	GRAVEL
DESIGN GROUP OR AIRCRAFT IF > 60,000 lbs	N/A	N/A
MAXIMUM ELEVATION (NAVD88)	18.3	18.3
TOUCHDOWN ZONE ELEVATION NAVD88	18.3 / 18.3	18.3 / 18.3
EFFECTIVE GRADE	0.18%	0.18%
MEAN GEODETIC BEARING	S 68°27'36" E	S 68°27'36" E
RUNWAY DIMENSIONS	59 x 982	59 x 982
RUNWAY SAFETY AREA (RSA)	60 x 1442	60 x 1462
RSA LENGTH BEYOND RUNWAY ENDS	220 / 240	240 / 240
RUNWAY OBJECT FREE AREA (ROFA)	250 x 1462	250 x 1462
ROFA LENGTH BEYOND RUNWAY ENDS	240 / 240	240 / 240
RUNWAY OBSTACLE FREE ZONE (OFZ)	120 x 1382	120 x 1382
RUNWAY PROTECTION ZONE (RPZ)	250 x 450 x 1000	250 x 450 x 1000
RUNWAY LIGHTING	NONE	MIRL
RUNWAY MARKING TYPE	N/A	N/A
RUNWAY NAVIGATIONAL AIDS	N/A	N/A
AERONAUTICAL SURVEY TYPE REQUIRED	NVG	NVG
DEPARTURE SURFACE	NO / NO	NO / NO

STATE OF ALASKA DEPARTMENT OF TRANSPORTATION AND PUBLIC FACILITIES CENTRAL REGION		
TOGIAK AIRPORT TOGIAK, ALASKA AIRPORT LAYOUT PLAN		DATE: 11/25/2019 SHEET: 2 OF 12
VN 06/2025 BY DATE	AS-BUILT PER CFAPTO0276 REVISION	AIRPORT DATA

Date Plotted: 11/25/2019, 10:51 AM
 Layout Name: E:\S1\Projects\2653_01_001_C_Togiak_Airport_Resources\facilities\1\ACAD\A1P-109-03_LAYOUTS.dwg
 File Name:
 Drawn By: MM
 Checkd By: CWB



- NOTES:**
- NO OFZ OBJECT PENETRATIONS.
 - NO RVZ OBSTRUCTIONS.
 - SEE INNER APPROACH SHEETS FOR THRESHOLD SITING CRITERIA.

FACILITIES DATA TABLE				
ID#	DESCRIPTION	STATION/OFFSET	TOP ELEV.	OBSTRUCT MARKING
1	LIGHTED WIND CONE	108+30/270R	27.8	LIGHTED
2	WIND CONE & SEGMENTED CIRCLE	127+50/375R	36.1	LIGHTED
3	WEATHER STATION	119+49/656R	41.3	LIGHTED
4	RADOME	120+57/704R	43.0	NONE
5	NATIONAL GUARD BLDG	124+13/787R	37.0	NONE
6	AIRPORT BEACON	124+93/792R	51.9	N/A
7	SREB	125+34/785R	48.1	NONE
8	HANGAR	126+85/769R	42.5	NONE
9	ANTENNA	129+60/809R	47.1	NONE
10	HANGAR	129+87/770R	38.4	NONE
11	UTILITY POLE	130+22/835R	45.3	NONE
12	UTILITY POLE	119+78/751R	50.2	NONE
13	UTILITY POLE	119+60/835R	49.2	NONE
14	UTILITY POLE	122+20/902R	49.2	NONE
15	UTILITY POLE	124+62/961R	49.2	NONE

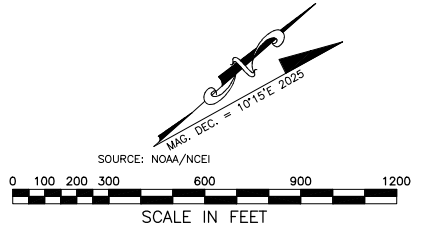
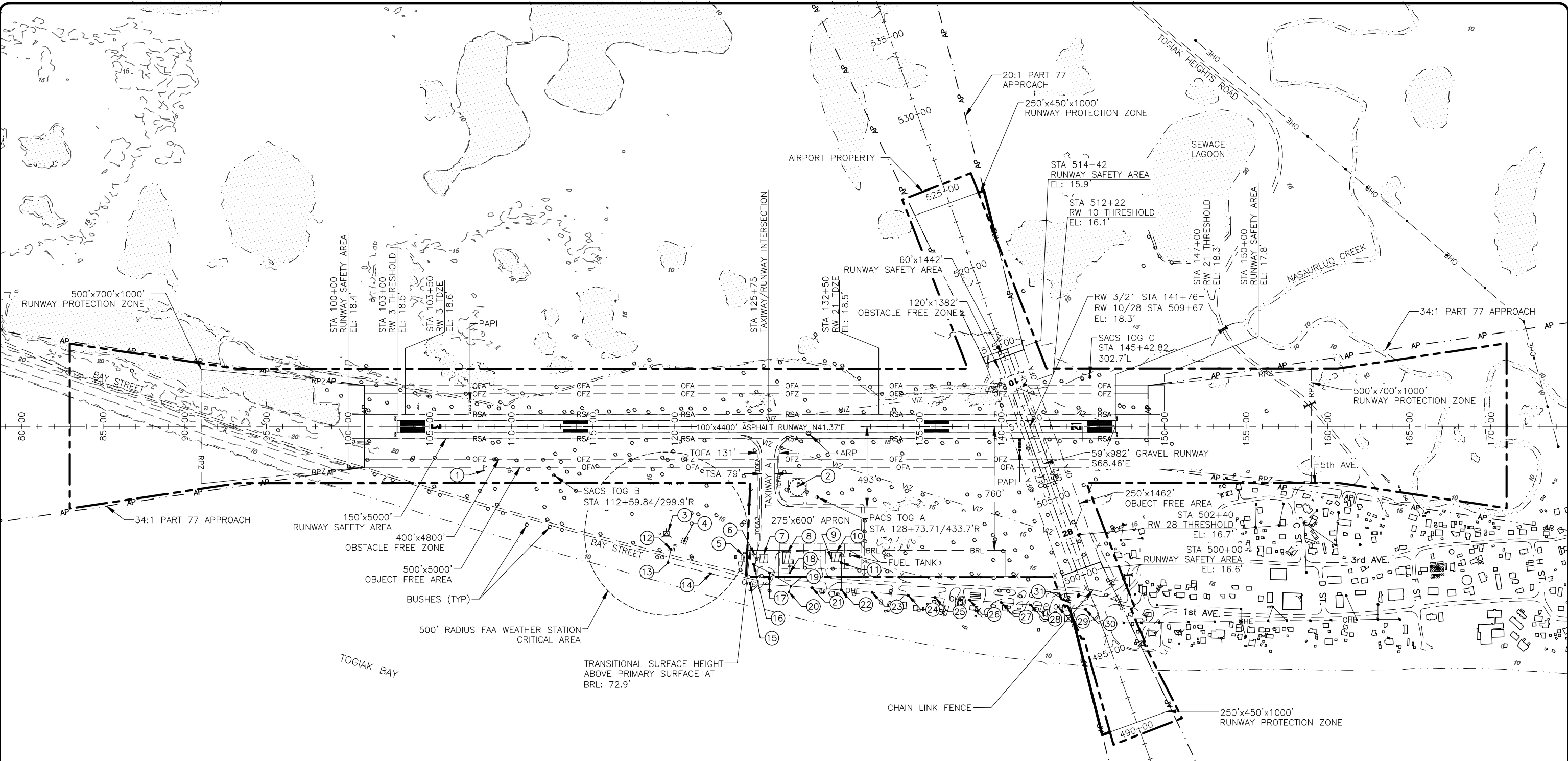
FACILITIES DATA TABLE				
ID#	DESCRIPTION	STATION/OFFSET	TOP ELEV.	OBSTRUCT MARKING
16	UTILITY POLE	124+83/844R	49.8	NONE
17	UTILITY POLE	125+81/895R	45.5	NONE
18	UTILITY POLE	127+05/896R	50.6	NONE
19	UTILITY POLE	127+12/978R	45.9	NONE
20	UTILITY POLE	126+99/1015R	34.9	NONE
21	UTILITY POLE	128+42/988R	46.2	NONE
22	UTILITY POLE	130+21/1002R	45.0	NONE
23	UTILITY POLE	132+10/1017R	44.6	NONE
24	UTILITY POLE	134+30/1034R	45.5	NONE
25	UTILITY POLE	135+95/1048R	44.8	NONE
26	UTILITY POLE	138+06/1063R	45.2	NONE
27	UTILITY POLE	140+02/1079R	44.8	NONE
28	UTILITY POLE	141+79/1093R	44.3	NONE
29	UTILITY POLE	143+49/1106R	44.2	NONE
30	UTILITY POLE	145+17/1121R	42.2	NONE
31	ANTENNA	144+19/1081R	44.2	NONE

FACILITIES DATA TABLE				
ID#	DESCRIPTION	STATION/OFFSET	TOP ELEV.	OBSTRUCT MARKING
32*	NDB/DME	182+76/535R	74.2	LIGHTED

*NOT SHOWN ON LAYOUT

STATE OF ALASKA DEPARTMENT OF TRANSPORTATION AND PUBLIC FACILITIES CENTRAL REGION		TOGIAK AIRPORT TOGIAK, ALASKA AIRPORT LAYOUT PLAN	DATE: 11/25/2019
			SHEET: 3
EXISTING LAYOUT			OF 12
VN	06/2025	AS-BUILT PER CFAP00276	
BY	DATE	REVISION	

Date Plotted: 11/25/2019, 10:51 AM
 Layout Name: 11.1
 File Name: Z:\Project\2653_01_001_C_Togiak_Airport_Restoration\11\ACAD\A\A\1P-04-LAYOUTS-ULT.dwg
 Designed By: MM
 Drawn By: VW:AA
 Checked By: CIB



- NOTES:**
- NO OFZ OBJECT PENETRATIONS.
 - NO RVZ OBSTRUCTIONS.
 - SEE INNER APPROACH SHEETS FOR THRESHOLD SITING CRITERIA.

FACILITIES DATA TABLE				
ID#	DESCRIPTION	STATION/OFFSET	TOP ELEV.	OBSTRUCT MARKING
1	LIGHTED WIND CONE	108+30/270R	27.8	LIGHTED
2	WIND CONE & SEGMENTED CIRCLE	127+50/375R	36.1	LIGHTED
3	WEATHER STATION	119+49/656R	41.3	LIGHTED
4	RADOME	120+57/704R	43.0	NONE
5	NATIONAL GUARD BLDG	124+13/787R	37.0	NONE
6	AIRPORT BEACON	124+93/792R	51.9	N/A
7	SREB	125+34/785R	48.1	NONE
8	HANGAR	126+85/769R	42.5	NONE
9	ANTENNA	129+60/809R	47.1	NONE
10	HANGAR	129+87/770R	38.4	NONE
11	UTILITY POLE	130+22/835R	45.3	NONE
12	UTILITY POLE	119+78/751R	50.2	NONE
13	UTILITY POLE	119+60/835R	49.2	NONE
14	UTILITY POLE	122+20/902R	49.2	NONE
15	UTILITY POLE	124+62/961R	49.2	NONE

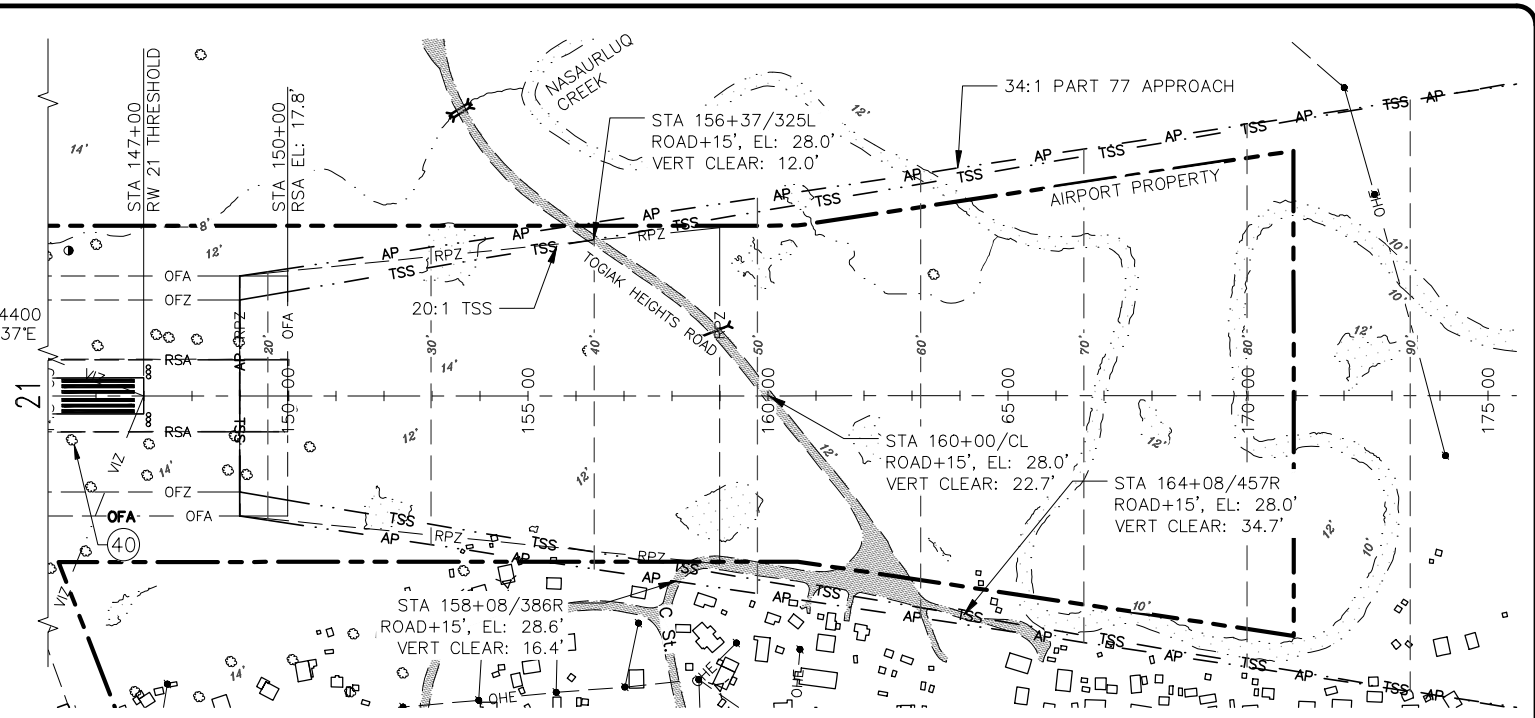
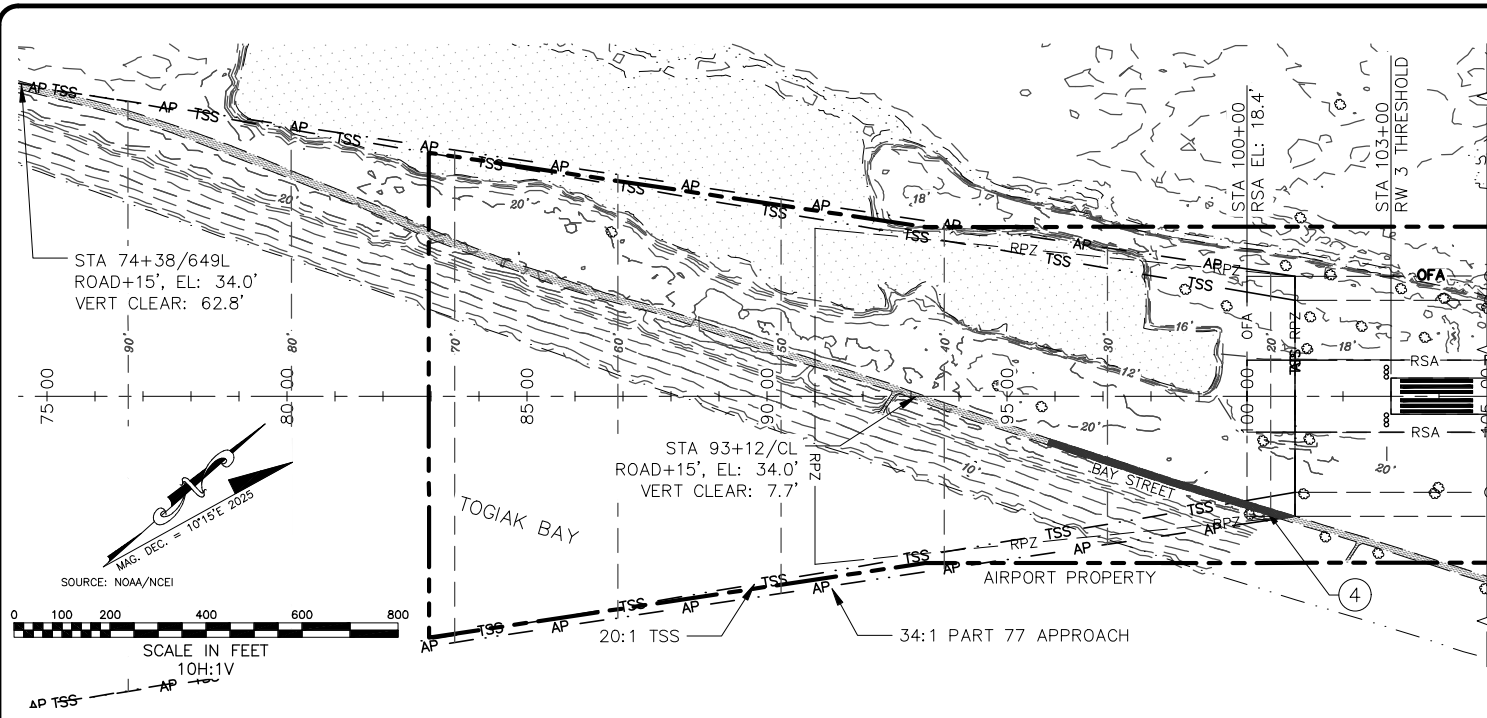
FACILITIES DATA TABLE				
ID#	DESCRIPTION	STATION/OFFSET	TOP ELEV.	OBSTRUCT MARKING
16	UTILITY POLE	124+83/844R	49.8	NONE
17	UTILITY POLE	125+81/895R	45.5	NONE
18	UTILITY POLE	127+05/896R	50.6	NONE
19	UTILITY POLE	127+12/978R	45.9	NONE
20	UTILITY POLE	126+99/1015R	34.9	NONE
21	UTILITY POLE	128+42/988R	46.2	NONE
22	UTILITY POLE	130+21/1002R	45.0	NONE
23	UTILITY POLE	132+10/1017R	44.6	NONE
24	UTILITY POLE	134+30/1034R	45.5	NONE
25	UTILITY POLE	135+95/1048R	44.8	NONE
26	UTILITY POLE	138+06/1063R	45.2	NONE
27	UTILITY POLE	140+02/1079R	44.8	NONE
28	UTILITY POLE	141+79/1093R	44.3	NONE
29	UTILITY POLE	143+49/1106R	44.2	NONE
30	UTILITY POLE	145+17/1121R	42.2	NONE
31	ANTENNA	144+19/1081R	44.2	NONE

FACILITIES DATA TABLE				
ID#	DESCRIPTION	STATION/OFFSET	TOP ELEV.	OBSTRUCT MARKING
32*	NDB/DME	182+76/535R	74.2	LIGHTED

*NOT SHOWN ON LAYOUT

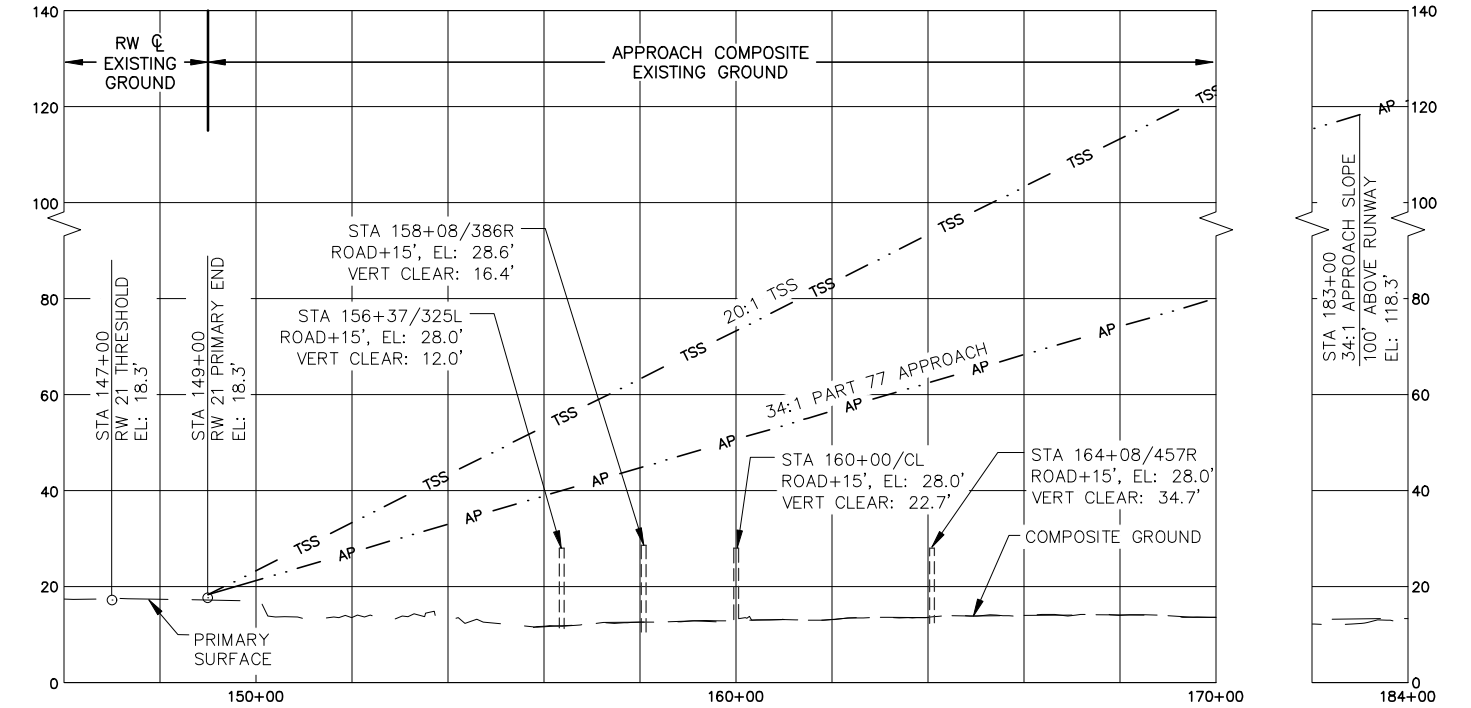
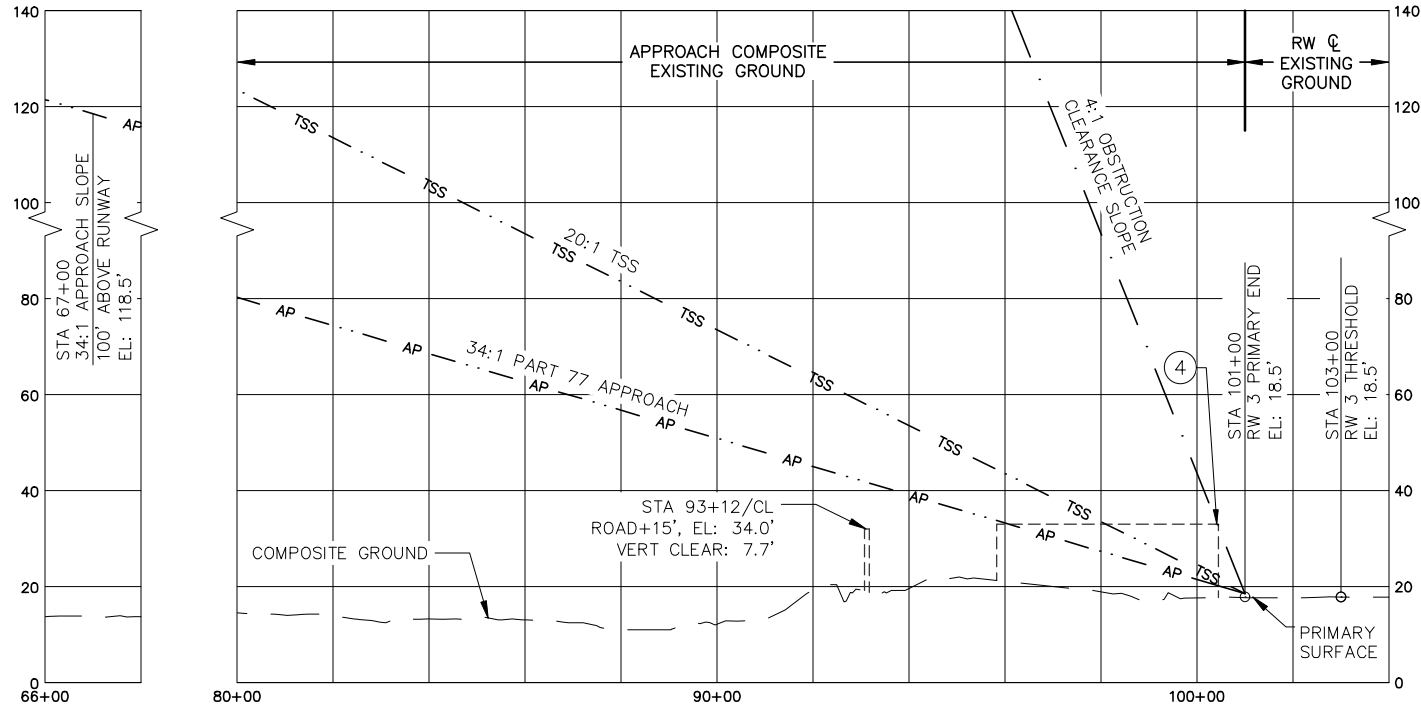
STATE OF ALASKA DEPARTMENT OF TRANSPORTATION AND PUBLIC FACILITIES CENTRAL REGION		DATE:	11/25/2019
		SHEET:	4
TOGIAK AIRPORT TOGIAK, ALASKA AIRPORT LAYOUT PLAN ULTIMATE LAYOUT		OF	12
		VN 06/2025 AS-BUILT PER CFAP00276 BY DATE REVISION	

Date Plotted: 16/06/2025, 10:51 AM
 Layout Name: APR
 File Name: Z:\projects\2653_01\DOT_C_Togiak_Airport_Resources\GIS\1\ACAD\VALP-106-06-07_APPROCH-SURF.dwg
 Designed By: MM
 Drawn By: VW:AA
 Checked By: CIB



RUNWAY 3

RUNWAY 21



RUNWAY 3 – PART 77 SURFACE OBSTRUCTION TABLE (INNER PORTION)

RUNWAY 21 – PART 77 SURFACE OBSTRUCTION TABLE (INNER PORTION)

ID#	DESCRIPTION	STATION/OFFSET	ELEVATION	SURFACE PENETRATED	SURFACE ELEVATION	AMOUNT PENETRATED	DISPOSITION	STAGE TO CORRECT
4	ROAD +15' (HP)	100+41/240R	33.0	APPROACH	20.2	12.8	TO REMAIN	N/A

ID#	DESCRIPTION	STATION/OFFSET	ELEVATION	SURFACE PENETRATED	SURFACE ELEVATION	AMOUNT PENETRATED	DISPOSITION	STAGE TO CORRECT
40	BUSHES (ALONG BOTH RUNWAYS)	VARIES	VARIES	PRIMARY	VARIES	0.5-3.5	REMOVE	ULTIMATE

RUNWAY 3 – THRESHOLD SITING SURFACE OBSTRUCTION TABLE

RUNWAY 21 – THRESHOLD SITING SURFACE OBSTRUCTION TABLE

N/A								
-----	--	--	--	--	--	--	--	--

N/A								
-----	--	--	--	--	--	--	--	--

NOTES:

- REFER TO THE AIRPORT AIRSPACE DRAWING FOR PENETRATIONS OF THE OUTER APPROACH SURFACES.
- MAPPING SHOWN ON THIS SHEET IS THE COMBINED TOPOGRAPHIC SURVEY AND CONTROLLED AERIAL MAPPING.
- THRESHOLD SITING IS DEFINED PER AC 150/5300-13B, TABLE 3-3, SURFACE 4.
- THE CONTROLLING OBSTRUCTION FOR THE APPROACH TO RUNWAY 3 IS A PUBLIC ROAD (+15) AT STATION 100+41 240 RT, ELEVATION 33.0. THE OBSTRUCTION CLEARANCE SLOPE IS ESTABLISHED AS 4:1 PER AIRPORT GIS DATA INFORMATION PORTAL (ADIP), AIRPORT MASTER RECORDS DATA DICTIONARY, DATA ELEMENT 57.

NOTES:

- REFER TO THE AIRPORT AIRSPACE DRAWING FOR PENETRATIONS OF THE OUTER APPROACH SURFACES.
- MAPPING SHOWN ON THIS SHEET IS THE COMBINED TOPOGRAPHIC SURVEY AND CONTROLLED AERIAL MAPPING.
- THRESHOLD SITING IS DEFINED PER AC 150/5300-13B, TABLE 3-3, SURFACE 4.
- THERE ARE NO CONTROLLING OBSTRUCTIONS FOR THE APPROACH TO RUNWAY 21. THE OBSTRUCTION CLEARANCE SLOPE IS ESTABLISHED AS 34:1 PER AIRPORT GIS DATA INFORMATION PORTAL (ADIP), AIRPORT MASTER RECORDS DATA DICTIONARY, DATA ELEMENT 57.

BY	DATE	REVISION
VN	06/2025	AS-BUILT PER CFAPTO0276

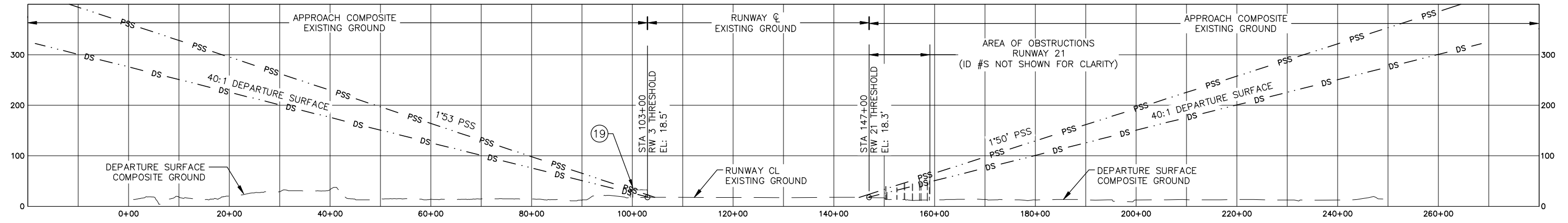
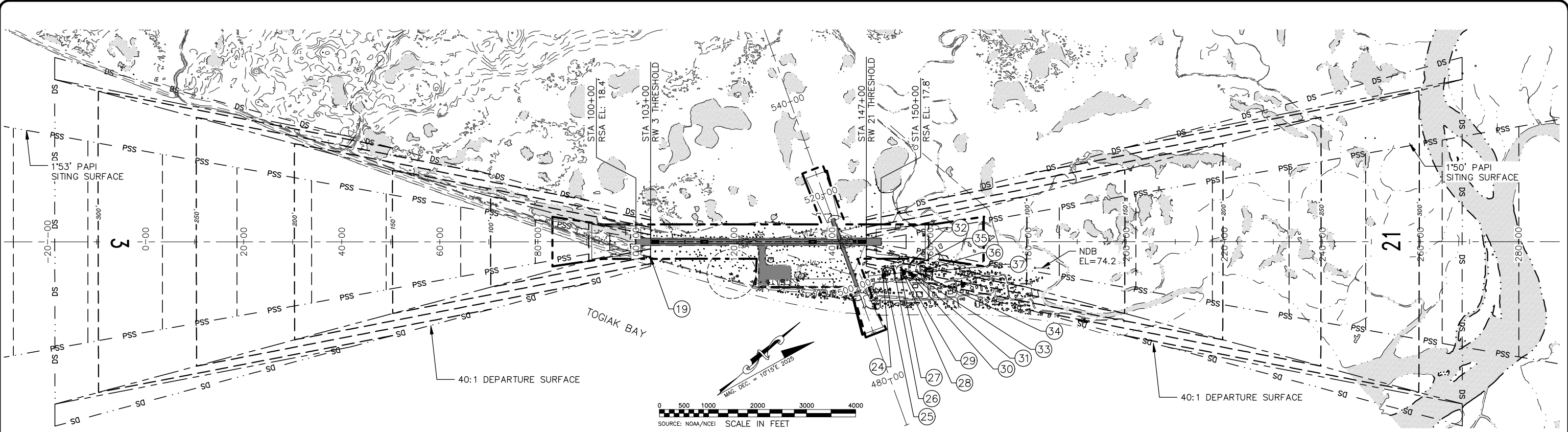
STATE OF ALASKA
DEPARTMENT OF TRANSPORTATION
AND PUBLIC FACILITIES
CENTRAL REGION

TOGIAK AIRPORT
 TOGIAK, ALASKA
 AIRPORT LAYOUT PLAN

EXISTING/ULTIMATE INNER PORTION OF
 THE APPROACH SURFACE - RUNWAY 3/21

DATE: 11/25/2019
 SHEET: 6 OF 12

Date Plotted: 11/25/2019 10:42 AM
 Project Name: 8 DEPARTURE SURF RW 3
 File Name: I:\Projects\2023\01\DOT\C.T. Togiak Airport - Resurfacing\GIS\Aerial\VALP-T03-08-DEP-SURF.dwg
 Designed By: MM
 Drawn By: BV
 Checked By: CJB



ID#	DESCRIPTION	STATION/OFFSET	ELEVATION	SURFACE PENETRATED	SURFACE ELEVATION	AMOUNT PENETRATED	DISPOSITION	STAGE TO CORRECT
19	ROAD +15 (HP)	102+91/315R	33.0	-	106.3	-	TO REMAIN	N/A

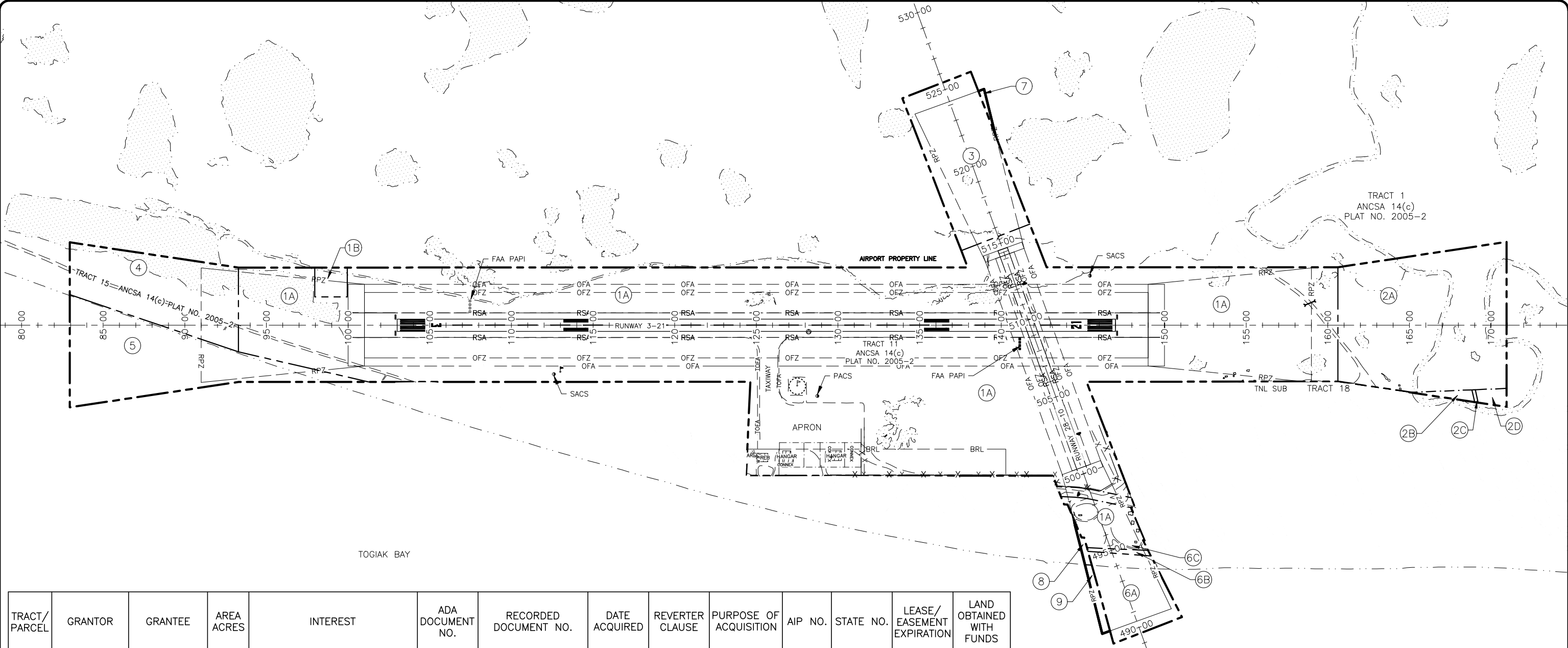
(HP) = HIGH POINT OF OBSTRUCTION AREA.

- NOTES:**
- MAPPING SHOWN ON THIS SHEET IS THE COMBINED TOPOGRAPHIC SURVEY AND CONTROLLED AERIAL MAPPING.
 - DEPARTURE SURFACE IS DEFINED PER AC 150/5300-13B, TABLE 3-5, SURFACE 7.
 - VERTICAL SCALE IS 10:1 HORIZONTAL.
 - THE SOURCE OF ELEVATIONS AND TOPOGRAPHIC SURVEY IS A COMPILATION OF GROUND SURVEY AND AERIAL MAPPING DATA COLLECTED DURING THE 2014 SEASON IN SUPPORT OF FAA AERONAUTICAL SURVEY #158433, AND DATA FROM A POST-CONSTRUCTION SURVEY FOR PROJECT CFAPT00276 COLLECTED IN THE SUMMER OF 2023.

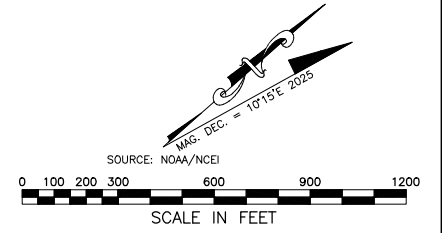
ID#	DESCRIPTION	STATION/OFFSET	ELEVATION	SURFACE PENETRATED	SURFACE ELEVATION	AMOUNT PENETRATED	DISPOSITION	STAGE TO CORRECT
24	BUILDING	150+32/572R	39.1	-	171.0	-	TO REMAIN	N/A
25	BUILDING	150+50/560R	27.8	-	165.8	-	TO REMAIN	N/A
26	BUILDING	152+52/498R	36.6	-	132.1	-	TO REMAIN	N/A
27	UTILITY POLE	153+97/634R	45.2	-	168.1	-	TO REMAIN	N/A
28	CATENARY	154+03/543R	44.9	-	137.4	-	TO REMAIN	N/A
29	UTILITY POLE	154+05/513R	44.7	-	127.3	-	TO REMAIN	N/A
30	UTILITY POLE	155+59/618R	44.5	-	152.4	-	TO REMAIN	N/A
31	CATENARY	155+59/611R	44.5	-	150.1	-	TO REMAIN	N/A
32	UTILITY POLE	155+62/478R	43.4	-	105.5	-	TO REMAIN	N/A
33	CATENARY	155+63/617R	44.6	-	151.8	-	TO REMAIN	N/A
34	UTILITY POLE	157+02/606R	45.6	-	139.2	-	TO REMAIN	N/A
35	UTILITY POLE	157+30/473R	46.0	-	93.1	-	TO REMAIN	N/A
36	UTILITY POLE	158+56/591R	47.9	-	124.3	-	TO REMAIN	N/A
37	ANTENNA	158+99/606R	50.3	-	126.5	-	TO REMAIN	N/A

STATE OF ALASKA DEPARTMENT OF TRANSPORTATION AND PUBLIC FACILITIES CENTRAL REGION		TOGIAK AIRPORT TOGIAK, ALASKA AIRPORT LAYOUT PLAN EXISTING/ULTIMATE DEPARTURE SURFACES RUNWAY 3/21		DATE: 11/25/2019 SHEET: 8 OF 12
		VN 06/2025 BY DATE	AS-BUILT PER CFAPT00276 REVISION	

Designated By: MM
 Drawn By: BN
 Checked By: CJB
 Date Plotted: 6/26/2025, 10:53 AM
 Layout Name: PRCP
 File Name: Z:\Projects\2653_01_DOT\C_Togiak_Airport_Resources\factimg\1\ACAD\VALP\1-100-12-PROP-MAP.dwg



TRACT/ PARCEL	GRANTOR	GRANTEE	AREA ACRES	INTEREST	ADA DOCUMENT NO.	RECORDED DOCUMENT NO.	DATE ACQUIRED	REVERTER CLAUSE	PURPOSE OF ACQUISITION	AIP NO.	STATE NO.	LEASE/ EASEMENT EXPIRATION	LAND OBTAINED WITH FUNDS
1A	CITY OF TOGIAK	STATE, DOT&PF	140.682	FEE TITLE SURFACE ESTATE	11398	Bk. 23 Pg. 890-900	3/24/1981	NO	CURRENT AERONAUTICAL	N/A	D44021	PERPETUAL	NO
1B	CITY OF TOGIAK	STATE, DOT&PF	0.826	AVIGATION, HAZARD ESMT. & R.O.W.	11399	Bk. 24 Pg. 17-30	4/9/1981	YES	CURRENT AERONAUTICAL	N/A	D44021	PERPETUAL	NO
2A	CITY OF TOGIAK	STATE, DOT&PF	19.484	AVIGATION, HAZARD ESMT. & R.O.W.	11400	Bk. 24 Pg. 17-30	4/9/1981	YES	CURRENT AERONAUTICAL	N/A	D44021	PERPETUAL	NO
2B	CITY OF TOGIAK	STATE, DOT&PF	0.329	AVIGATION, HAZARD ESMT. & R.O.W.	11400	Bk. 24 Pg. 17-30	4/9/1981	YES	CURRENT AERONAUTICAL	N/A	D44021	PERPETUAL	NO
2C	CITY OF TOGIAK	STATE, DOT&PF	0.036	AVIGATION, HAZARD ESMT. & R.O.W.	11400	Bk. 24 Pg. 17-30	4/9/1981	YES	CURRENT AERONAUTICAL	N/A	D44021	PERPETUAL	NO
2D	CITY OF TOGIAK	STATE, DOT&PF	0.433	AVIGATION, HAZARD ESMT. & R.O.W.	11400	Bk. 24 Pg. 17-30	4/9/1981	YES	CURRENT AERONAUTICAL	N/A	D44021	PERPETUAL	NO
3	CITY OF TOGIAK	STATE, DOT&PF	10.331	AVIGATION, HAZARD ESMT. & R.O.W.	11401	Bk. 24 Pg. 17-30	4/9/1981	YES	CURRENT AERONAUTICAL	N/A	D44021	PERPETUAL	NO
4	CITY OF TOGIAK	STATE, DOT&PF	9.923	AVIGATION, HAZARD ESMT. & R.O.W.	11402	Bk. 24 Pg. 17-30	4/9/1981	YES	CURRENT AERONAUTICAL	N/A	D44021	PERPETUAL	NO
5	DEPT. OF NAT. RESOURCES	STATE, DOT&PF	11.500	AVIGATION, HAZARD ESMT. & R.O.W.	11403	Bk. 24 Pg. 11-16	4/20/1981	YES	CURRENT AERONAUTICAL	N/A	D44021	PERPETUAL	NO
6A	DEPT. OF NAT. RESOURCES	STATE, DOT&PF	4.614	AVIGATION, HAZARD ESMT. & R.O.W.	11404	Bk. 24 Pg. 11-16	4/20/1981	YES	CURRENT AERONAUTICAL	N/A	D44021	PERPETUAL	NO
6B	CITY OF TOGIAK	STATE, DOT&PF	0.239	AVIGATION, HAZARD ESMT. & R.O.W.	11405	Bk. 24 Pg. 17-30	4/9/1981	YES	CURRENT AERONAUTICAL	N/A	D44021	PERPETUAL	NO
6C	CITY OF TOGIAK	STATE, DOT&PF	0.507	AVIGATION, HAZARD ESMT. & R.O.W.	11405	Bk. 24 Pg. 17-30	4/9/1981	YES	CURRENT AERONAUTICAL	N/A	D44021	PERPETUAL	NO
7	CITY OF TOGIAK	STATE, DOT&PF	0.121	AVIGATION, HAZARD ESMT. & R.O.W.		TO BE ACQUIRED							
8	CITY OF TOGIAK	STATE, DOT&PF	0.099	AVIGATION, HAZARD ESMT. & R.O.W.		TO BE ACQUIRED							
9	DEPT. OF NAT. RESOURCES	STATE, DOT&PF	0.513	AVIGATION, HAZARD ESMT. & R.O.W.		TO BE ACQUIRED							



RECORDING DISTRICT FOR TOGIAK IS 307-BRISTOL BAY

STATE OF ALASKA	
DEPARTMENT OF TRANSPORTATION AND PUBLIC FACILITIES	
CENTRAL REGION	
TOGIAK AIRPORT TOGIAK, ALASKA AIRPORT LAYOUT PLAN AIRPORT PROPERTY MAP	DATE: 11/25/2019 SHEET: 12 OF 12
VN 06/2025 BY DATE	AS-BUILT PER CFAPT00276 REVISION