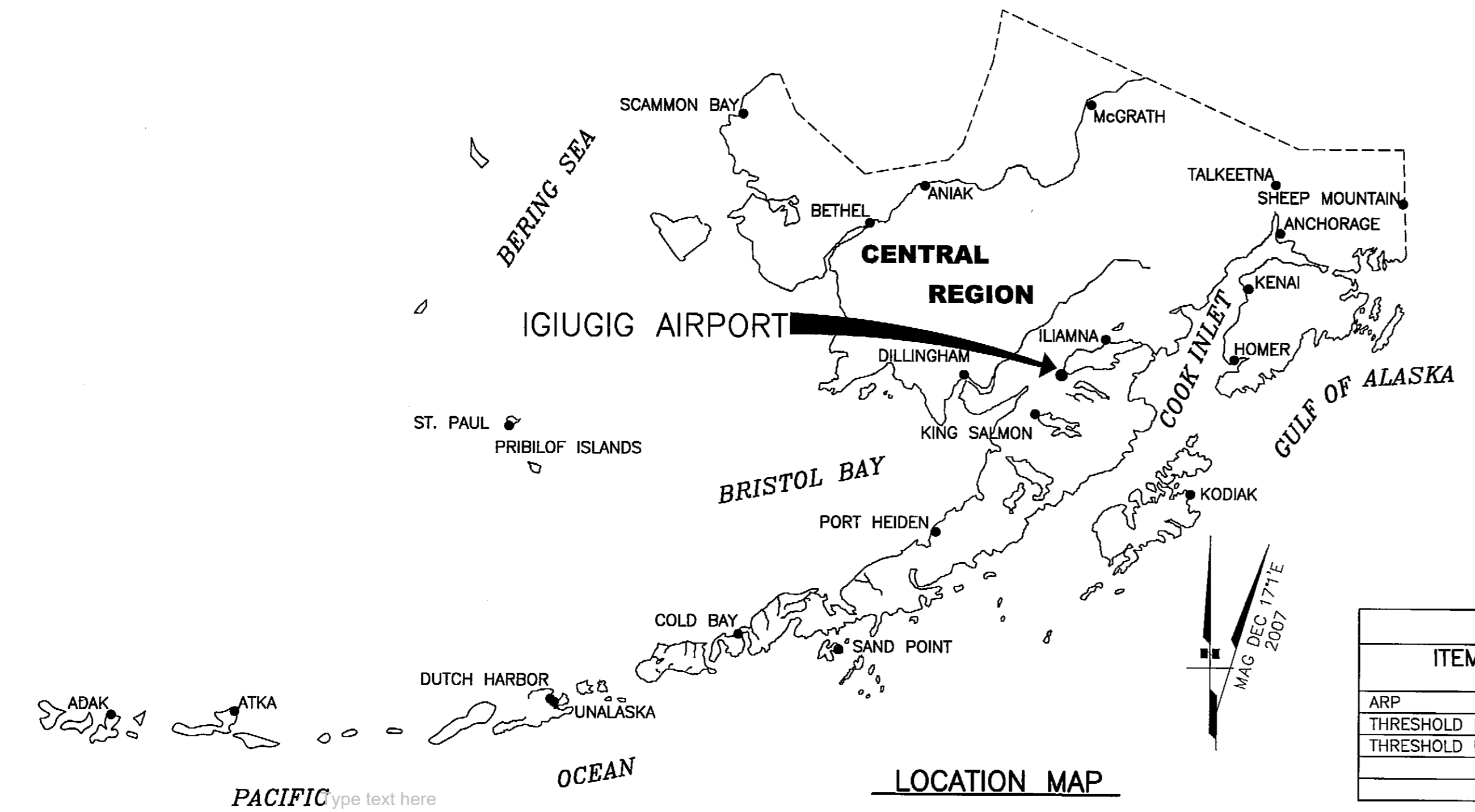


FILE No.: 232-55-1

Date Plotted: 11/08/2007, 9:02 AM  
 Layout Name: (1) \Projects\232-55-1\ALP\ALP\_Igiugig\_Data.dwg  
 File Name: (1) \Projects\232-55-1\ALP\ALP\_Igiugig\_Data.dwg  
 Designed By: mlwellyn  
 Drawn By: dmboiler  
 Checked By: jbrinson



LEGEND		
ITEM	EXISTING	ULTIMATE
AIRPORT REFERENCE POINT (A.R.P.)		
ANTENNA		
BLUFF		
BUILDINGS		
BUILDING RESTRICTION LINE		
FENCE		
PAPI		
PROPERTY LINE		
REIL		
ROADWAYS		
ROTATING BEACON		
SHORELINE		
SURVEY MONUMENT		
THRESHOLD MARKERS/LIGHTS		
TOPOGRAPHIC CONTOURS		
TREE (LARGE SINGLE)		
TREELINE		
VASI		
WIND CONE		
WIND CONE AND SEGMENTED CIRCLE		

AIRPORT DATA TABLE		
ITEM	EXISTING	ULTIMATE
ICAO IDENTIFIER	PAIG	PAIG
NATIONAL AIRPORT IDENTIFIER	IGG	IGG
FAA SITE NUMBER	50338.*A	50338.*A
AIRPORT ELEVATION NAVD88	90.4'	90.4'
AIRPORT REFERENCE CODE	B II	B II
MEAN MAX. TEMPERATURE, HOTTEST MONTH	60 F JULY	60 F JULY
AIRPORT AND TERMINAL NAVIGATION AIDS	GPS	GPS
	ROTATING BEACON	ROTATING BEACON
TAXIWAY LIGHTING/MARKING	M. I.	M. I.
OBSTRUCTION SURVEY SOURCE & TYPE	NONE	ANP
MAGNETIC DECLINATION, YEAR, RATE OF CHANGE	17°1'E, 2007	0°13' (W)/YEAR

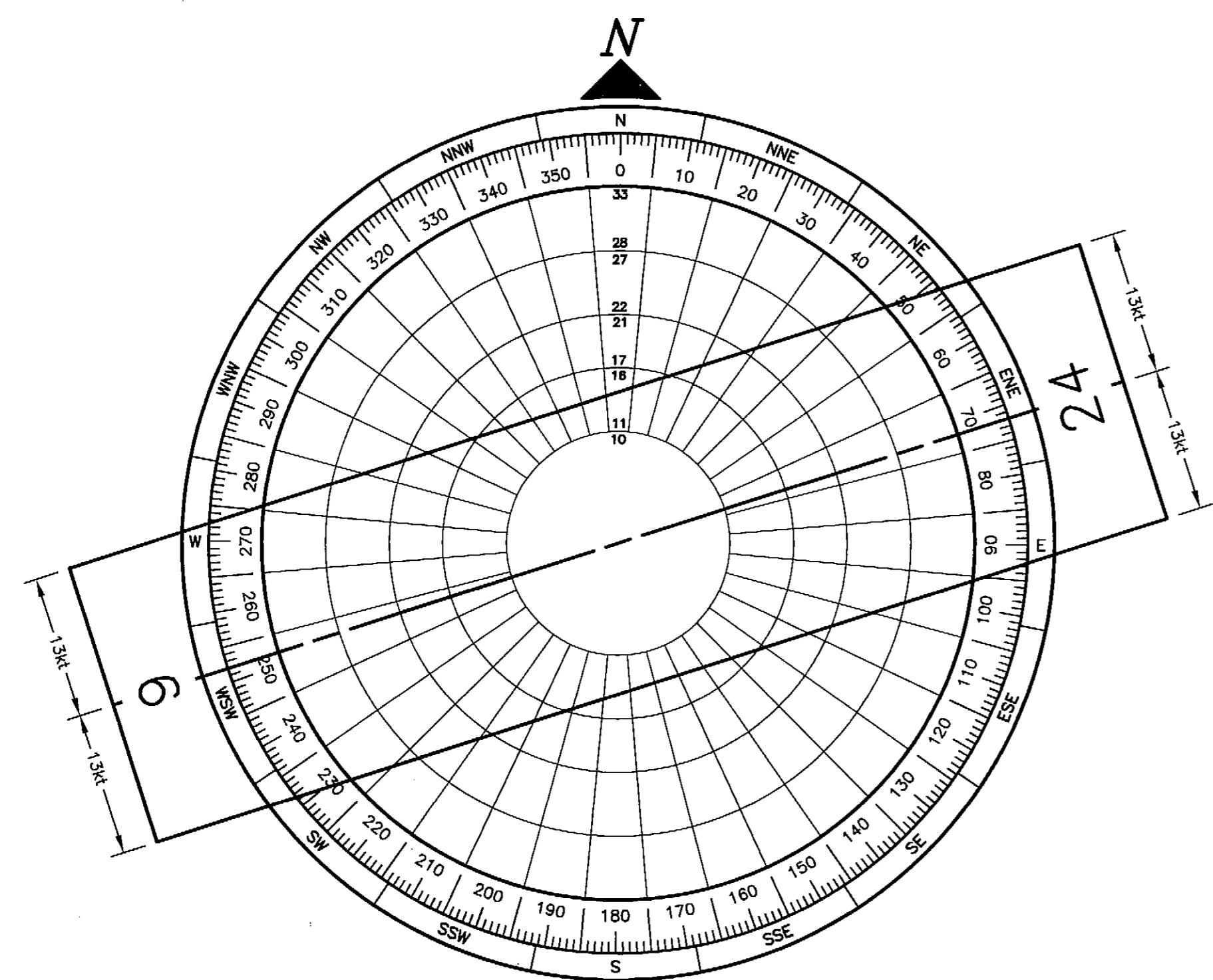
GEOGRAPHIC COORDINATES TABLE				
ITEM	EXISTING LATITUDE	EXISTING LONGITUDE	ULTIMATE LATITUDE	ULTIMATE LONGITUDE
ARP	59°19'26.55"N	155°54'06.38"W	59°19'26.55"N	155°54'06.38"W
THRESHOLD RW 6	59°19'21.98"N	155°54'33.87"W	59°19'21.98"N	155°54'33.87"W
THRESHOLD RW 24	59°19'31.12"N	155°53'38.89"W	59°19'31.12"N	155°53'38.89"W

RUNWAY 6/24 DATA TABLE			
ITEM	EXISTING	NEAR-TERM	ULTIMATE
RUNWAY TYPE	UTILITY OR OTHER THAN UTILITY		UTILITY
FAR PART 77 APPROACH CATEGORY (V, NPI, P)			NPI / NPI
APPROACH SURFACES			20:1 / 20:1
VISIBILITY MINIMUM			1 SM
RUNWAY SURFACE			GRAVEL
PAVEMENT STRENGTH SW,DW,DTW,DDTW x1000lbs			N/A
AIRCRAFT APPROACH CATEGORY			B
AIRPLANE DESIGN GROUP			II
TRUE BEARING			N71°58'53"E
EFFECTIVE GRADE			0.57%
TOUCHDOWN ELEVATION NAVD88			90.4'
RUNWAY DIMENSIONS			75' x 3000'
RUNWAY SAFETY AREA (RSA) DIMENSIONS			150' x 3600'
LENGTH BEYOND R/W END			300' / 300'
RUNWAY PROTECTION ZONE (RPZ) DIMENSIONS			500' x 700' x 1000'
RUNWAY OBJECT FREE AREA (ROFA) DIMENSIONS			500' x 3600'
LENGTH BEYOND R/W END OR STOPWAY			300' / 300'
RUNWAY OBSTACLE FREE ZONE (ROFZ) DIMENSIONS			250' x 3400'
RUNWAY LIGHTING			M.I.
RUNWAY MARKING TYPE			NONE
RUNWAY VISUAL APPROACH AIDS			NONE

SAME AS EXISTING

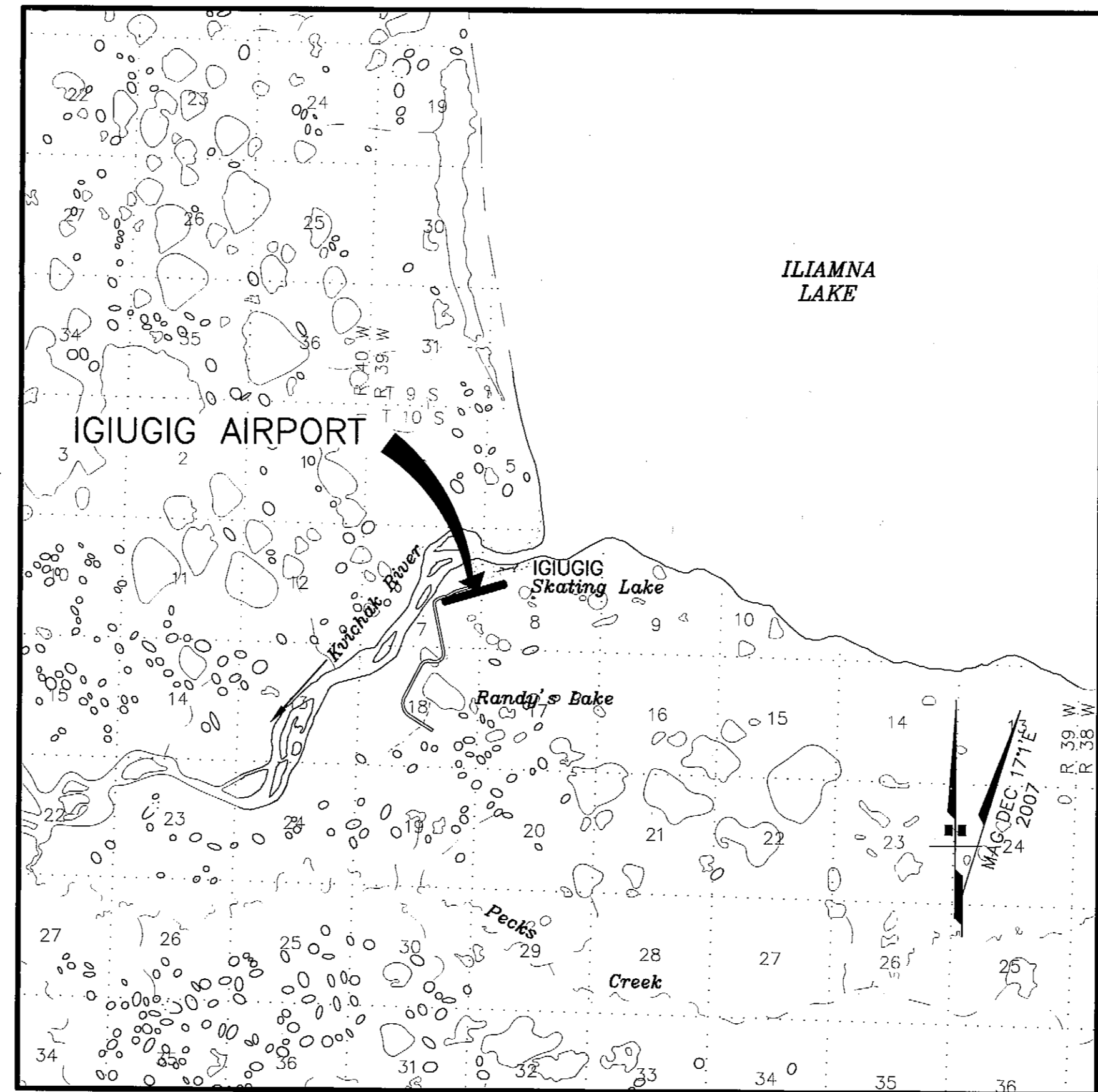
**NOTES:**

1. THE RUNWAY THRESHOLDS AND ELEVATIONS SHOWN ON THIS ALP ARE BASED ON SURVEYED DATA FROM THE AVIATION SYSTEM STANDARDS OFFICE OF THE FAA.
2. THE BASEMAP WAS PROVIDED BY DCED; THE ELEVATIONS WERE ADJUSTED TO MATCH SURVEY DATA FROM AVN. DCED DATA APPEARED TO BE IN NGVD 29.
3. RUNWAY NUMBERS CHANGED FROM 5/23 TO 6/24 DUE TO CHANGES IN MAGNETIC DECLINATION.



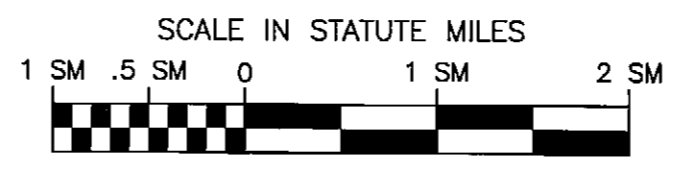
WIND DATA TABLE				
RUNWAY	10.5 kt	13 kt	16 kt	20 kt
-	-	-	-	-
-	-	-	-	-
-	-	-	-	-

THERE IS NO WIND DATA AVAILABLE FOR THE IGIUGIG AIRPORT.



**VICINITY MAP**

T 10 S, R 39 W, SEC. 7 & 8  
 SEWARD MERIDIAN  
 U.S.G.S. ILIAMNA (B-8), ALASKA



MODIFICATION TO STANDARDS/ NON STANDARD CONDITIONS			
DESCRIPTION	STANDARD	EXISTING	ULTIMATE

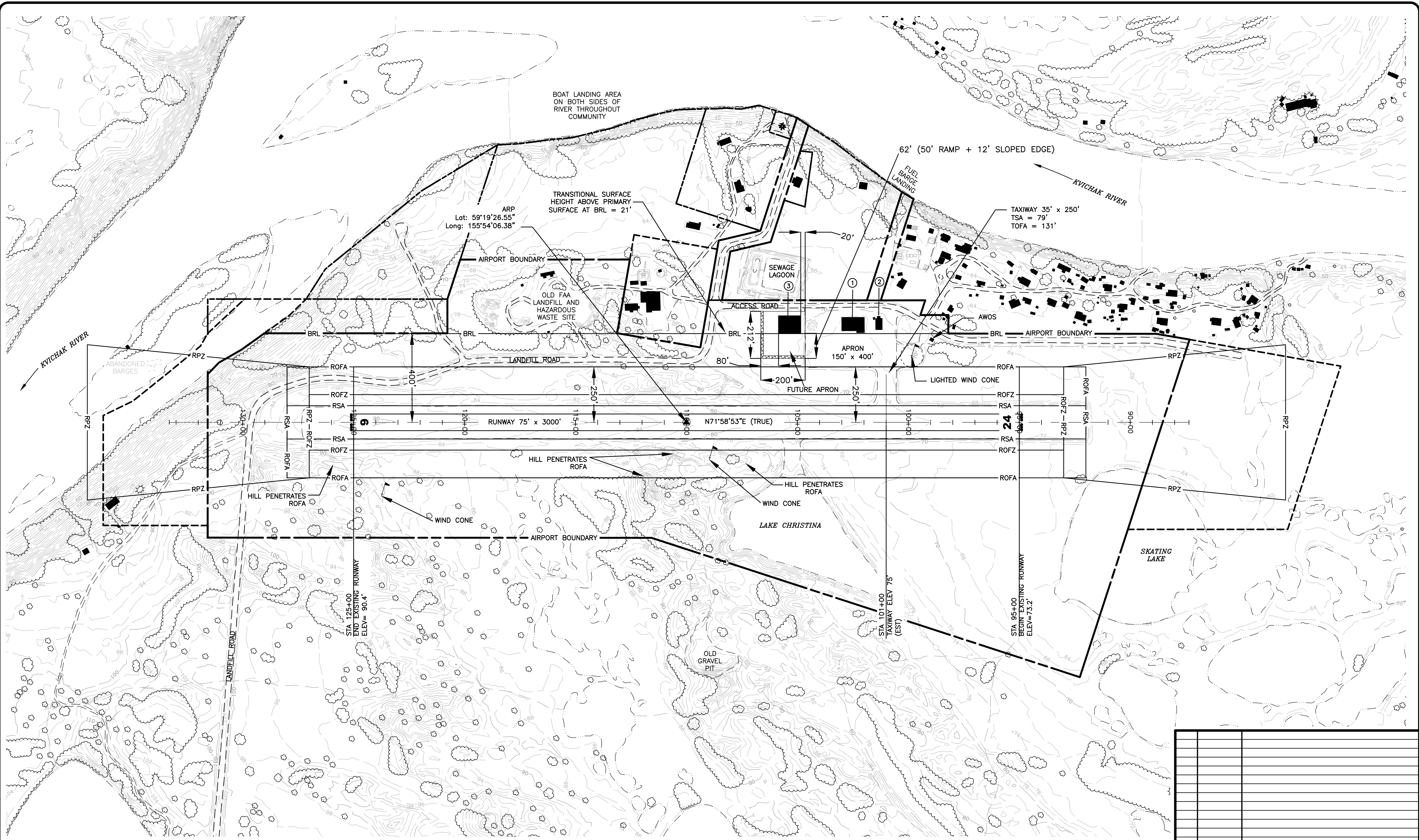
DRAWING INDEX	
SHT #	TITLE
1	AIRPORT DATA SHEET
2	AIRPORT LAYOUT PLAN
3	INNER PORTION OF THE APPROACH SURFACE
4	AIRPORT AIRSPACE, 14 CFR, PART 77
5	PROPERTY MAP

MS	1/28/2006	ADDED BLDG 3 (HANGAR) PER SHEET 2 OF 5
BY	DATE	REVISION
APPROVED:		DATE: 11-14-07
RECOMMENDED:		DATE: 11-14-07
ROBERT A. CAMPBELL, P.E. PRECONSTRUCTION ENGINEER		
HARVEY M. DOUTHETT, P.E. DESIGN SECTION CHIEF		
AIRPORT LAYOUT PLAN CONDITIONAL APPROVAL SUBJECT TO ALP APPROVAL LETTER DATED 11/22/07		
FAA AIRSPACE REVIEW NUMBER: _____		
		DATE: 11/21/07
FAA, AIRPORTS DIVISION ALASKAN REGION, AAL-621		

<b>STATE OF ALASKA</b>	
<b>DEPARTMENT OF TRANSPORTATION AND PUBLIC FACILITIES</b>	
<b>CENTRAL REGION</b>	
<b>IGIUGIG AIRPORT</b> IGIUGIG, ALASKA AIRPORT LAYOUT PLAN	DATE: 11/08/2007 SHEET: 1 OF 5
AIRPORT DATA SHEET	

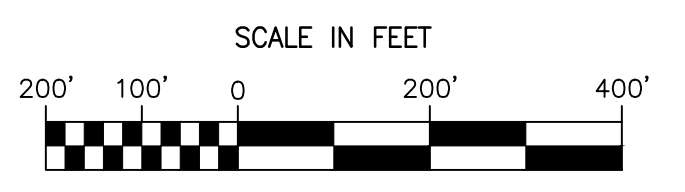
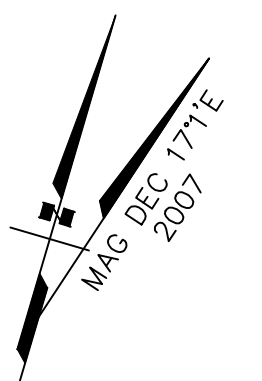


**BUILDING DATA TABLE**

ID #	DESCRIPTION	STATION/OFFSET	TOP ELEV (NAVD88)	OBSTRUCT MARKING
①	HANGAR	101+49/404'RT	90'	NONE
②	DOT&PF MAINT	101+32/418'RT	87'	NONE
③	FUTURE HANGAR	104+65/400'RT	90'	TBD

**NOTES:**

1. NO ROFZ OBJECT PENETRATIONS.



MS	DATE	REVISION
MS	2/3/2026	FUTURE APRON

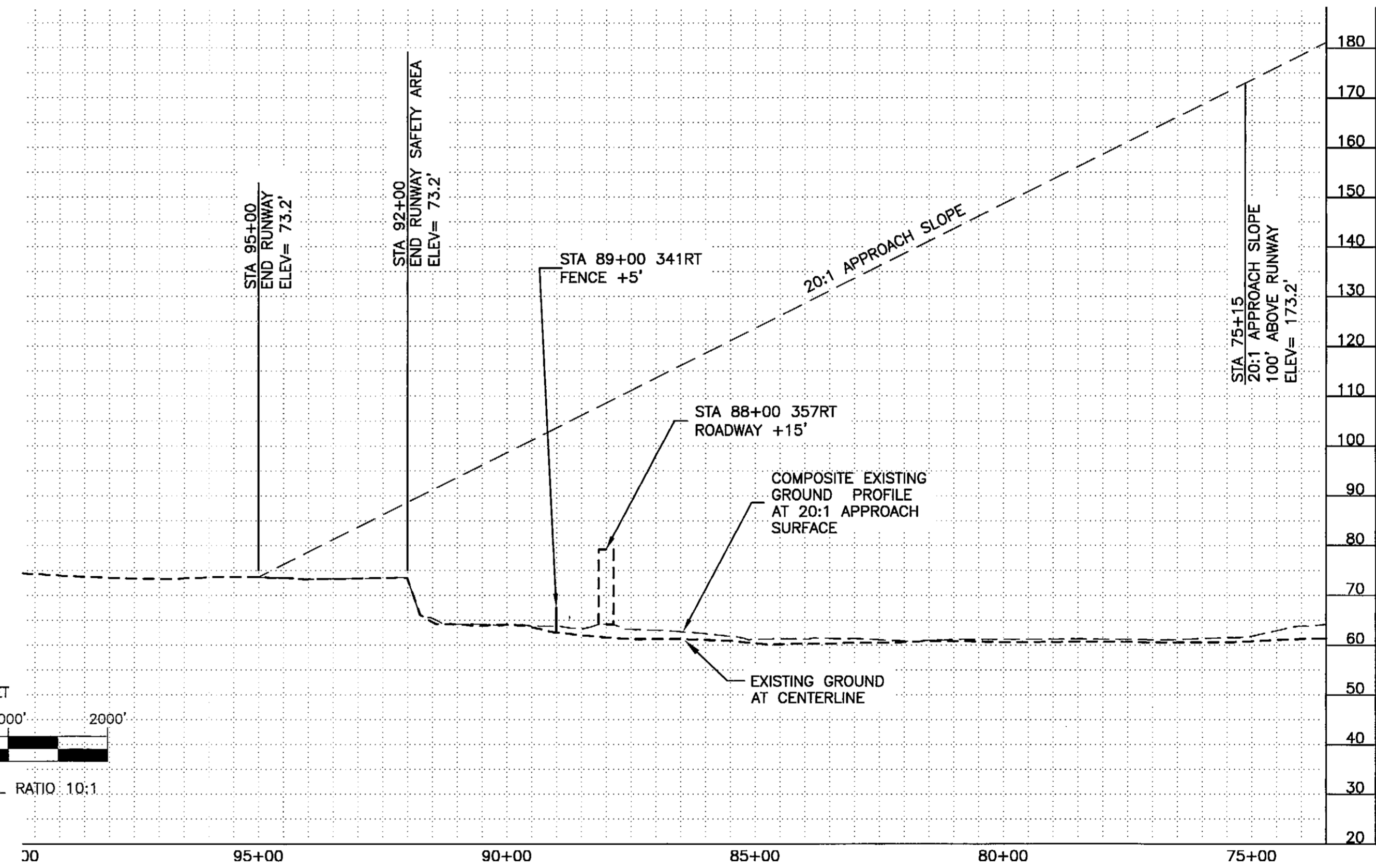
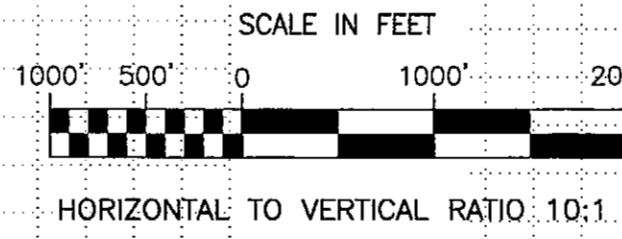
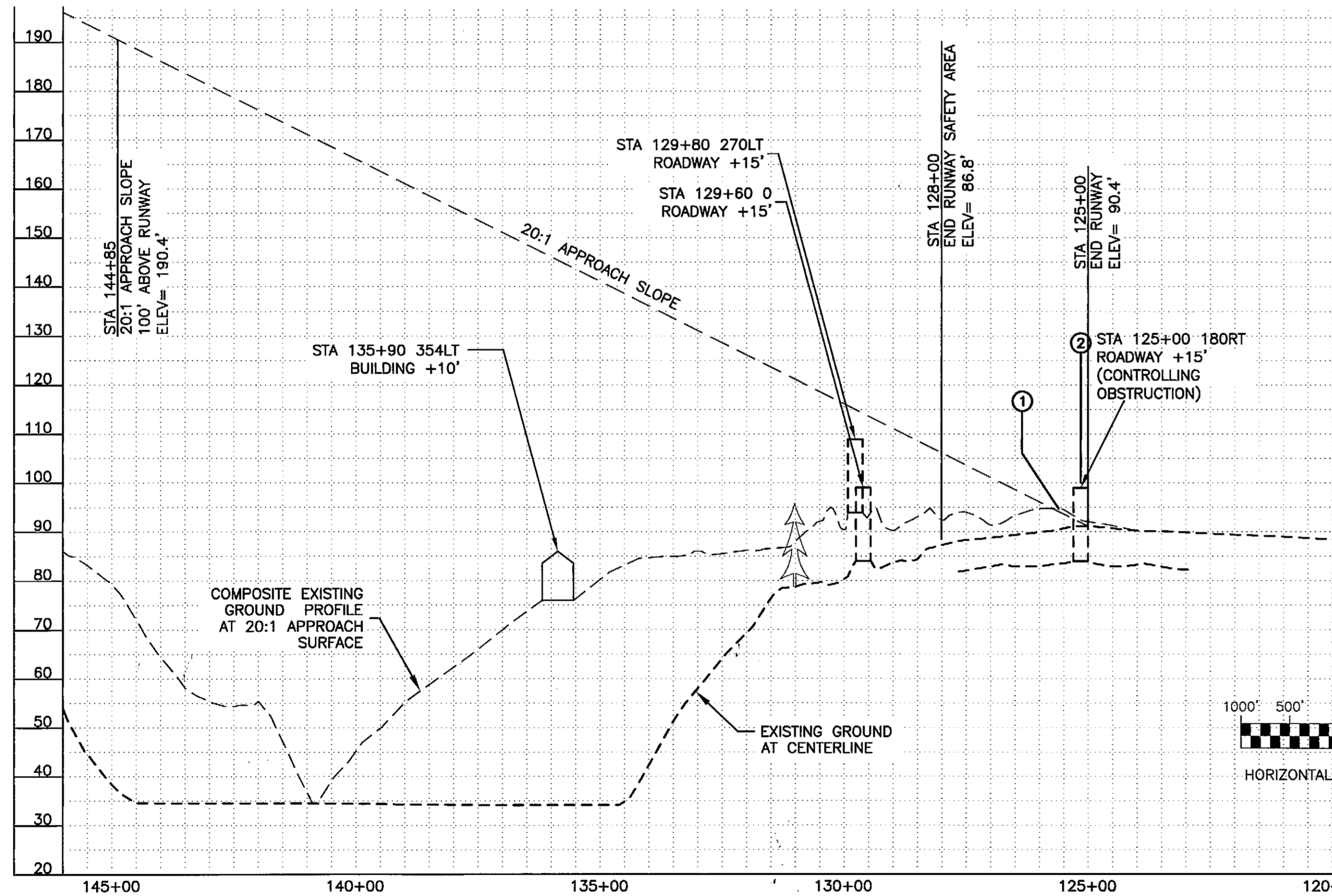
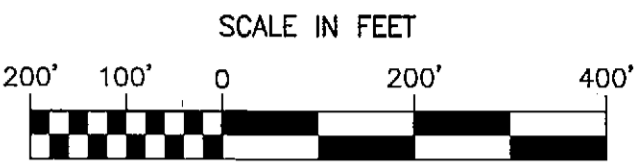
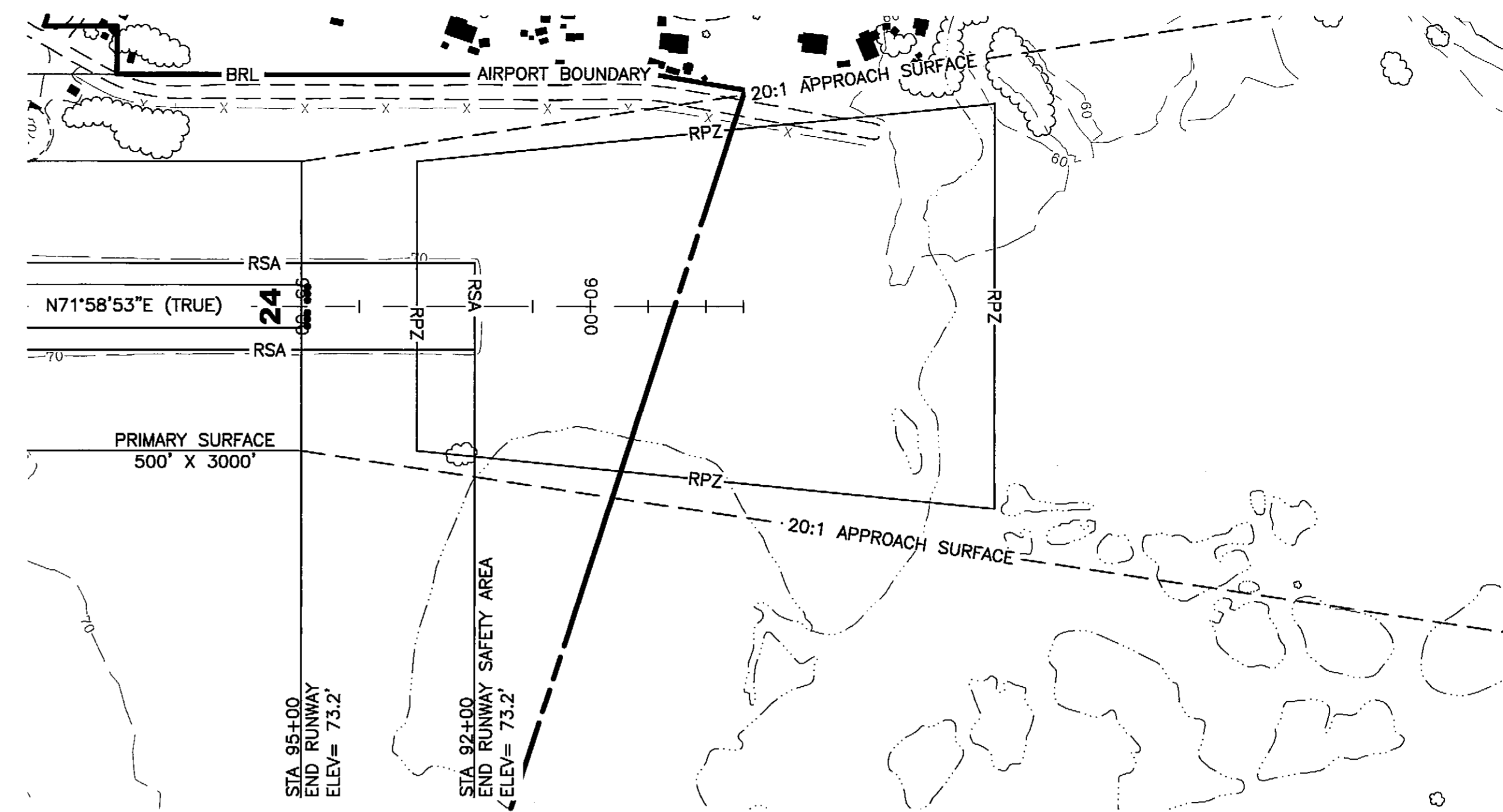
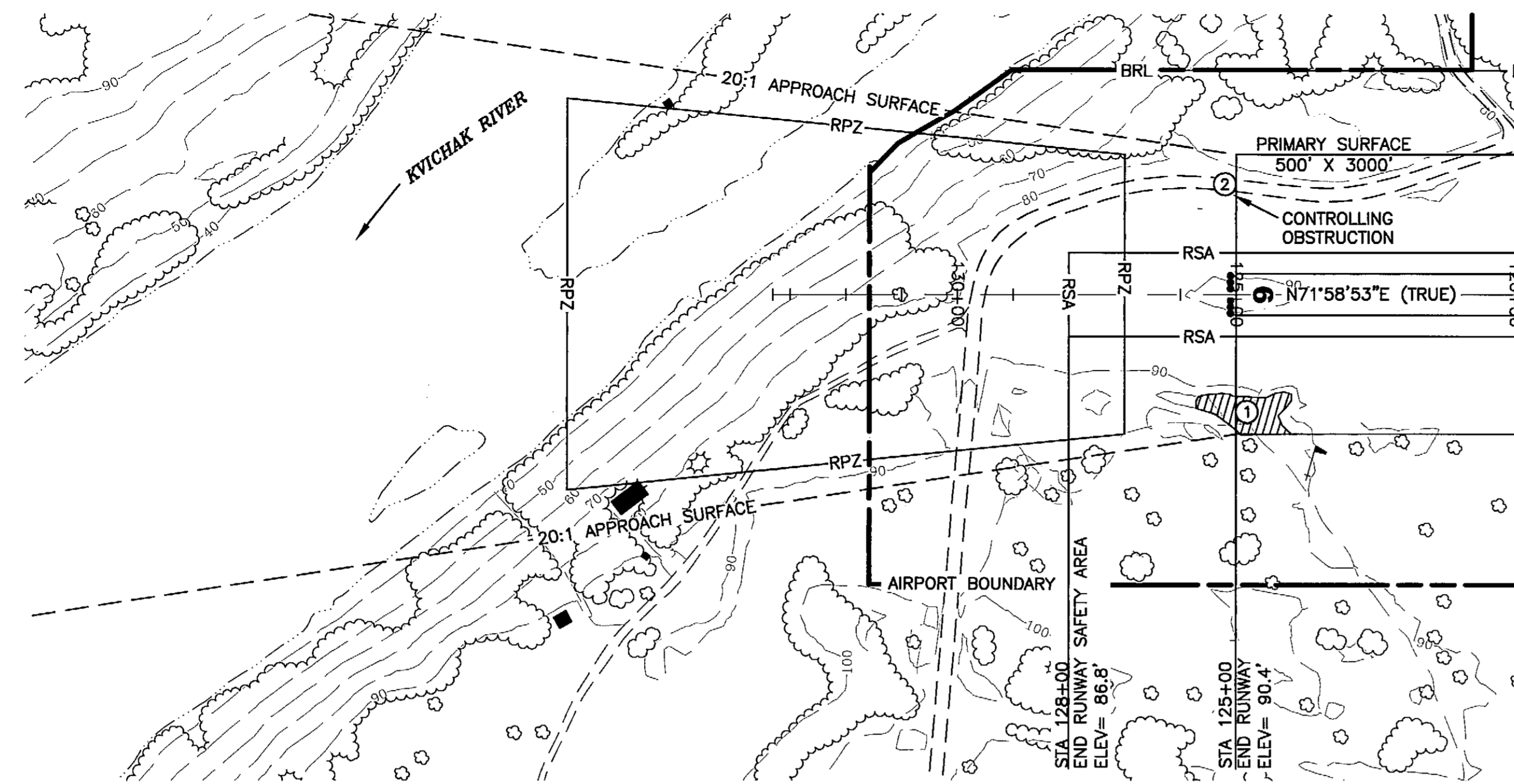
**IGIUGIG AIRPORT**  
 IGIUGIG, ALASKA  
 AIRPORT LAYOUT PLAN  
 AIRPORT LAYOUT PLAN

DATE: 11/08/2007  
 SHEET: 2 OF 5

FILE No.: 232-55-4

Designed By: mllewellyn  
 Drawn By: rmbauer  
 Checked By: blanson

Date Plotted: 11/08/2007 9:01 AM  
 Approaches: I:\Projects\059422\059422\gigug\VALP\VALP\_igug.dwg  
 Layout Name: I:\Projects\059422\059422\gigug\VALP\VALP\_igug.dwg  
 File Name:



**NOTES:**

1. THE CONTROLLING OBSTRUCTION FOR THE APPROACH TO RUNWAY 6 IS THE ROAD AT STA 125+00 180'RT, ELEVATION INCLUDING 15' VEHICLE IS 99'. THE OBSTRUCTION CLEARANCE HEIGHT IS ESTABLISHED AS 1:1 PER FAA AC 150/5200-35, CHAPTER 4.
2. THERE ARE NO OBJECT PENETRATIONS IN THE RUNWAY APPROACH END SITING SURFACES OF RUNWAY 6 AS DEFINED IN FAA AC 150/5300-13, TABLE A2-1, ROW 2.

**NOTES:**

1. THERE ARE NO OBSTRUCTIONS IN THE APPROACH TO RUNWAY 24, THEREFORE THE OBSTRUCTION CLEARANCE SLOPE IS ESTABLISHED AS 50:1 PER FAA AC 150/5200-35, CHAPTER 4.
2. THERE ARE NO OBJECT PENETRATIONS IN THE RUNWAY APPROACH END SITING SURFACES OF RUNWAY 24, AS DEFINED IN FAA AC 150/5300-13, TABLE A2-1, ROW 5.

**20:1 APPROACH SURFACE OBSTRUCTIONS TABLE (INNER PORTION RW 6)**

ID #	DESCRIPTION	STATION/OFFSET	ELEVATION	SURFACE PENETRATED	SURFACE ELEVATION	AMOUNT PENETRATION	DISPOSITION	STAGE TO CORRECT
①	TERRAIN*	126+44/177' LT	94'	APPROACH/PRIMARY	92'	2'	REMAIN	
②	ROAD	125+00/180' RT	99'	APPROACH/PRIMARY	90.4'	8.6'	REMAIN	

\* SHOWING AREA OF GREATEST PENETRATION.

**20:1 APPROACH SURFACE OBSTRUCTIONS TABLE (INNER PORTION RW 24)**

ID #	DESCRIPTION	STATION/OFFSET	ELEVATION	SURFACE PENETRATED	SURFACE ELEVATION	AMOUNT PENETRATION	DISPOSITION	STAGE TO CORRECT
	NONE							

BY	DATE	REVISION
<b>IGIUGIG AIRPORT</b>		
IGIUGIG, ALASKA		
AIRPORT LAYOUT PLAN		
INNER PORTION OF THE APPROACH SURFACE		
DATE:	11/08/2007	
SHEET:	3	
	OF 5	



