



U.S. Department
of Transportation

**Federal Aviation
Administration**

Alaskan Region Airports Division

222 W. 7th Avenue, Box 14
Anchorage, Alaska 99513-7587
Tel. (907) 271-5438
Fax (907) 271-2851

7/8/2025

To:
AK DOT&PF
Attn: Steven Rzepka
4111 Aviation Ave, Anchorage, AK 99502

Dear Steven Rzepka,

Eek Airport, Eek, Alaska
Airport Layout Plan Pen-and-Ink Change Conditional Approval
Airspace Case No. 2025-AAL-271-NRA

The proposed change to your currently approved Airport Layout Plan (ALP), as submitted within the Airspace Case No. referenced above, is conditionally approved. Concurrent to this conditional approval, FAA accepts revisions made on 7/7/2025 to update Airport elevation, threshold latitude, and Airport Reference Point latitude to match existing survey data.

This determination does not constitute FAA approval or disapproval of the physical development involved in the proposal. It is a determination with respect to the safe and efficient use of navigable airspace by aircraft and with respect to the safety of persons and property on the ground.

The FAA Reauthorization Act of 2024 has limited the FAA's review and approval authority for Airport Layout Plans (ALP). The FAA's approval of this ALP is limited to existing facilities only for which the FAA retains approval authority. The FAA has not determined whether it retains review and approval authority for any proposed facilities depicted on the ALP associated with this letter (unless otherwise noted). FAA will determine whether it retains approval authority for ALP changes reflecting future facilities when such facilities are ripe for consideration (when such facilities are intended to be built), and such approval, if required, must be granted before construction occurs.

Although the FAA's review and approval authority of proposed projects depicted on an ALP is limited, airport sponsors must continue to maintain an up-to-date ALP in accordance with Federal law, 49 U.S.C. § 47107(a)(16).

In making this determination, the FAA has considered matters such as the effects the proposal would have on existing or planned traffic patterns of neighboring airports, the effects it would have on the existing airspace structure and projected programs of the FAA, the effects it would have on the safety of persons and property on the ground, and the effects that existing or proposed manmade objects (on file with the FAA) and known natural objects within the

affected area would have on the airport proposal.

The FAA cannot prevent the construction of structures near an airport. The airport environs can only be protected through such means as local zoning ordinances, acquisitions of property in fee title or aviation easements, letters of agreement, or other means.

This ALP change approval is conditioned on acknowledgement that any development on airport property requiring Federal environmental approval must receive such written approval from FAA prior to commencement of the subject development. This ALP approval is also conditioned on acceptance of the plan under local land use laws. We encourage appropriate agencies to adopt land use and height restrictive zoning based on the plan.

This determination does not indicate that the United States will participate in the cost of any development proposed. Airport Improvement Program (AIP) funding requires evidence of eligibility and justification at the time a funding request is ripe for consideration.

When construction of any proposed structure or development indicated on the plan is undertaken, such construction requires normal 45-day advance notification to FAA for review in accordance with applicable Federal Aviation Regulations (i.e., Parts 77, 157, 152, etc.). More notice is generally beneficial to ensure that all statutory, regulatory, technical and operational issues can be addressed in a timely manner.

This determination does not represent approval of a modification to any FAA standard. Requests for Modifications of Standards (MOS) must be submitted separately, pursuant to requirements in the current version of FAA Orders 5100.38, Airport Improvement Program Handbook, and 5300.1, Modifications to Agency Airport Design, Construction, and Equipment Standards.

This approval does not include approval of any lease and does not release the airport sponsor from any existing federal obligations or other legal obligations.

Please attach this letter, along with the depicted changes, to the currently approved Airport Layout Plan and retain it in your files. This Pen-and-Ink change will remain in effect until the next as-built ALP is produced, or the next formal update of your ALP (whichever is sooner); at which time the change should be incorporated into the full ALP drawing set.

We look forward to working with you in the continued development of the Eek airport. If you have any questions, please contact Carley Wallace, Community Planner, at our office at 907-271-5145.

Sincerely,

Jonathan Linquist
Lead Community Planner

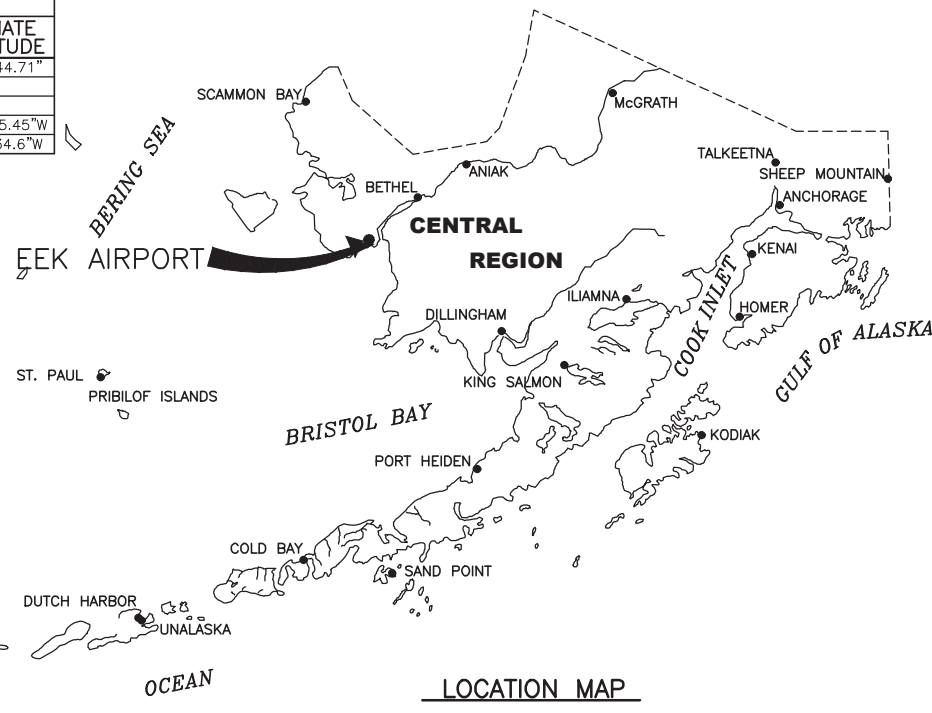
Enclosure

LEGEND		
ITEM	EXISTING	ULTIMATE
AIRPORT REFERENCE POINT (A.R.P.)		
ANTENNA		
BLUFF		
BUILDINGS		
BUILDING RESTRICTION LINE		
FENCE		
PAPI		
PROPERTY LINE		
REIL		
ROADWAYS		
ROTATING BEACON		
SHORELINE		
SURVEY MONUMENT		
THRESHOLD MARKERS/LIGHTS		
TOPOGRAPHIC CONTOURS		
TREE (LARGE SINGLE)		
TREELINE		
VASI		
WIND CONE		
WIND CONE AND SEGMENTED CIRCLE		

GEOGRAPHIC COORDINATES TABLE				
ITEM	EXISTING LATITUDE	EXISTING LONGITUDE	ULTIMATE LATITUDE	ULTIMATE LONGITUDE
ARP	60d 12' 49.32"N	162d 02' 38.06"W	60d 12' 43.41"N	162d 02' 44.71"W
THRESHOLD RW 18	60d 13' 5.09"N	162d 02' 32.99"W		
THRESHOLD RW 36	60d 12' 33.55"N	162d 02' 43.12"W		
THRESHOLD RW 7			60d 12' 32.43"N	162d 03' 15.45"W
THRESHOLD RW 25			60d 12' 35.6"N	162d 02' 34.6"W

GEODEIC COORDINATES FROM 2006 RECORD OF SURVEY
2024

60d 13' 5.09"N

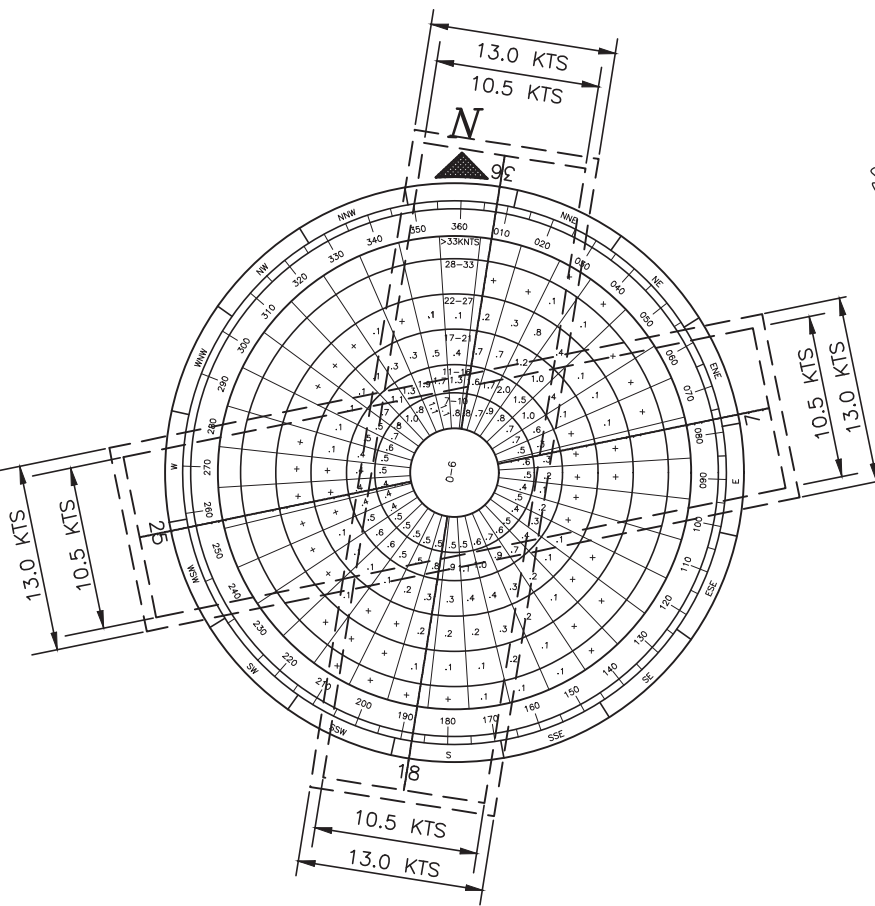


AIRPORT DATA TABLE		
ITEM	EXISTING	ULTIMATE
ICAO IDENTIFIER	NONE	NONE
NATIONAL AIRPORT IDENTIFIER	EKK	EKK
FAA SITE NUMBER	50177*A	50177*A
AIRPORT ELEVATION NAVD88	24.8' - 21.4'	21.4'
AIRPORT REFERENCE CODE	B-1	B-1
MEAN MAX. TEMPERATURE, HOTTEST MONTH	60° F	60° F
AIRPORT AND TERMINAL NAVIGATION AIDS	ROTATING BEACON	ROTATING BEACON
TAXIWAY LIGHTING/MARKING	M. I.	M. I.
OBSTRUCTION SURVEY SOURCE & TYPE	NONE	ANP
MAGNETIC DECLINATION, YEAR, RATE OF CHANGE	9°28' E, 2025	0.27' W / YEAR

RUNWAY 18/36 DATA TABLE		
ITEM	EXISTING	ULTIMATE
RUNWAY TYPE	UTILITY OR OTHER THAN UTILITY	UTILITY
FAR PART 77 APPROACH CATEGORY (V, NPI, P)		NPI
APPROACH SURFACES		34:1
VISIBILITY MINIMUM		1 MILE
RUNWAY SURFACE		GRAVEL
PAVEMENT STRENGTH SW,DW,DTW,DDTW x1000lbs		N/A
AIRCRAFT APPROACH CATEGORY		B
AIRPLANE DESIGN GROUP		I
TRUE BEARING		N 9°04'50" E
EFFECTIVE GRADE		0.06 %
TOUCHDOWN ELEVATION NAVD88		21.4' / 21.4'
RUNWAY DIMENSIONS		60' x 3242'
RUNWAY SAFETY AREA (RSA) DIMENSIONS		120' x 3723'
LENGTH BEYOND R/W END		240' / 240'
RUNWAY PROTECTION ZONE (RPZ) DIMENSIONS		500' x 700' x 1000'
RUNWAY OBJECT FREE AREA (OFA) DIMENSIONS		400' x 3723'
LENGTH BEYOND R/W END OR STOPWAY		240' / 240'
RUNWAY OBSTACLE FREE ZONE (OFZ) DIMENSIONS		400' x 3643'
RUNWAY LIGHTING		M.I.
RUNWAY MARKING TYPE		NONE
RUNWAY VISUAL APPROACH AIDS		PAPI, REIL/NONE

RUNWAY 7/25 DATA TABLE		
ITEM	EXISTING	ULTIMATE
RUNWAY TYPE	UTILITY OR OTHER THAN UTILITY	UTILITY
FAR PART 77 APPROACH CATEGORY (V, NPI, P)		NPI
APPROACH SURFACES		20:1
VISIBILITY MINIMUM		1 MILE
RUNWAY SURFACE		GRAVEL
PAVEMENT STRENGTH SW,DW,DTW,DDTW x1000lbs		N/A
AIRCRAFT APPROACH CATEGORY		B
AIRPLANE DESIGN GROUP		I
TRUE BEARING		N79° 02' 35"W
EFFECTIVE GRADE		0.11 %
TOUCHDOWN ELEVATION NAVD88		17.9' / 17.9'
RUNWAY DIMENSIONS		60' x 2095'
RUNWAY SAFETY AREA (RSA) DIMENSIONS		120' x 2575'
LENGTH BEYOND R/W END		240' / 240'
RUNWAY PROTECTION ZONE (RPZ) DIMENSIONS		500' x 700' x 1000'
RUNWAY OBJECT FREE AREA (OFA) DIMENSIONS		400' x 2575'
LENGTH BEYOND R/W END OR STOPWAY		240' / 240'
RUNWAY OBSTACLE FREE ZONE (OFZ) DIMENSIONS		250' x 2495'
RUNWAY LIGHTING		M.I.
RUNWAY MARKING TYPE		NONE
RUNWAY VISUAL APPROACH AIDS		PAPI/REIL

ELEVATIONS ARE NAVD88 BASE ON RECENT RECORD OF SURVEY. SUBTRACT 7.76' TO GET TO PREVIOUS AIRPORT NAVD 20 VERTICAL DATUM.
THE EXISTING AIRPORT ELEVATION HAS BEEN UPDATED BASED ON THE RECENT 2024 RECORD OF SURVEY USING NAVD88 (GEOID12B). ALL OTHER ELEVATIONS ARE NAVD88 (GEOID99) BASE ON THE 2006 RECORD OF SURVEY. SUBTRACT 7.76' FROM THE 2006 SURVEY ELEVATIONS TO GET PREVIOUS AIRPORT NAVD VERTICAL DATUM.



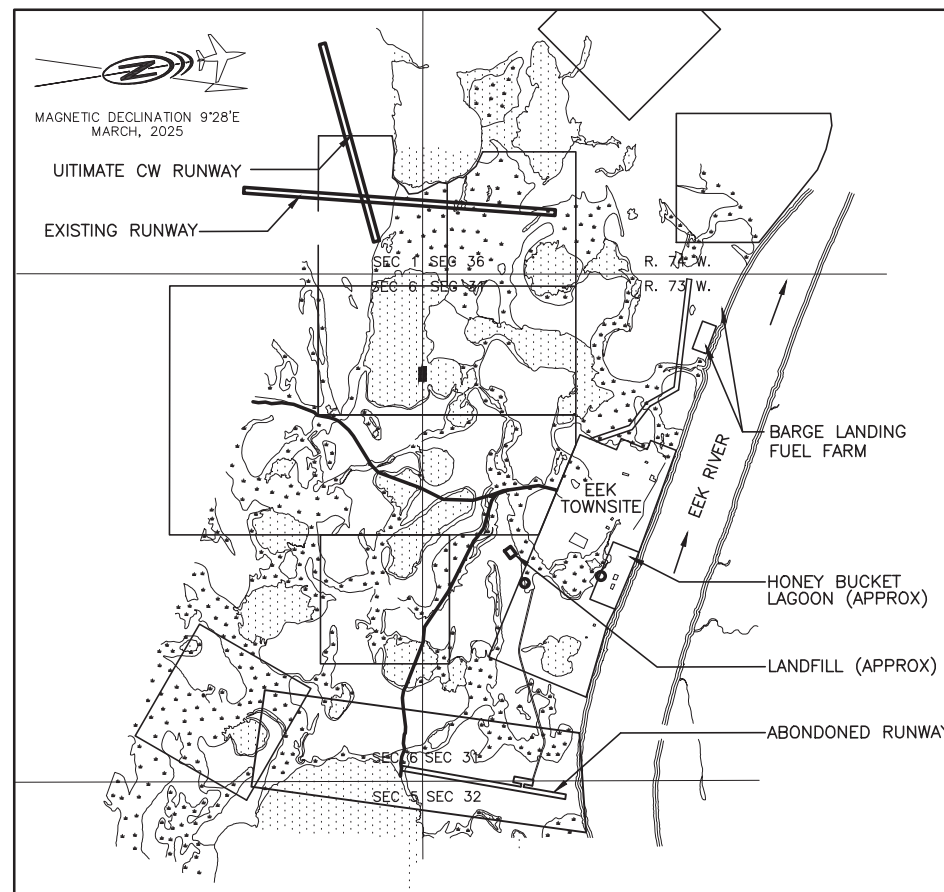
WIND DATA

RW 18/36 WIND COVERAGE: 10.5 KNOTS 88.7%
RW 6/24 WIND COVERAGE: 10.5 KNOTS 70.3%
COMBINED COVERAGE: 10.5 KNOTS 94.5%

SOURCE: ONE YEAR WIND STUDY AT EEK AIRPORT, 1 JAN., 92 TO 31 DEC., 92. CONDUCTED BY ENRI, UAA-ALASKA CLIMATE CENTER, FOR ADOT & PF. EEK ALASKA IS LOCATED 39 NAUTICAL MILES SOUTHWEST OF BETHEL.

PERIOD: 1992

MODIFICATION TO STANDARDS/ NON STANDARD CONDITIONS			
DESCRIPTION	STANDARD	EXISTING	ULTIMATE
WIND COVERAGE (10.5 KNOTS) COMBINED	95.0%	88.7%	94.5%



VICINITY MAP

NTS
T 2 N, R 73 W, SEC. 31
SEWARD MERIDIAN
U.S.G.S. BAIRD INLET (A-1), ALASKA
SCALE APPROXIMATELY 1"=1000'

DRAWING INDEX	
SHT #	TITLE
01	VICINITY MAP, DATA TABLES, AND WINDROSE
02	EXISTING AIRPORT PLAN
03	AIRPORT ULTIMATE DEVELOPMENT PLAN
04	RUNWAY 18/36 INNER APPROACH
05	RUNWAY 7/25 INNER APPROACH
06	F.A.R. PART 77
07	AIRPORT PROPERTY MAP

AMD 07/07/2025	UPDATED EXISTING ARP LATITUDE AND EXISTING RW 18 THRESHOLD LATITUDE	
AMD 07/07/2025	UPDATED EXISTING AIRPORT ELEVATION	
RJB 03/07/2025	UPDATED RUNWAY NUMBERS	
BY	DATE	REVISION
APPROVED:	DATE: 4/25/07	
ROBERT A. CAMPBELL, P.E.	PRECONSTRUCTION ENGINEER	
RECOMMENDED:	DATE: 4/15/2007	
HARVEY M. POUTHIT, P.E.	DESIGN SECTION CHIEF	
AIRPORT LAYOUT PLAN CONDITIONAL APPROVAL SUBJECT TO ALP APPROVAL LETTER DATED 2/7/2007 FAA AIRSPACE REVIEW NUMBER:00-AAL-97AAL-112NRA		
DATE: 2/7/2007		
FAA AIRPORTS DIVISION ALASKAN REGION, AAL-		

STATE OF ALASKA DEPARTMENT OF TRANSPORTATION AND PUBLIC FACILITIES CENTRAL REGION	
EEK AIRPORT EEK, ALASKA AIRPORT LAYOUT PLAN VICINITY MAP, DATA TABLES, AND WINDROSE	
DATE:	7/7/06
SHEET:	1 OF 7

Date Plotted: 3/10/2025, 7:56 AM
 Layout Name: W:\Projects\Eek\ALP_2007\Airport_Layout_Plan\ALP-AS_BULL_2006_Drawings\Data-index.dwg
 File Name:

Designed By: rburnett
 Drawn By:
 Checked By:



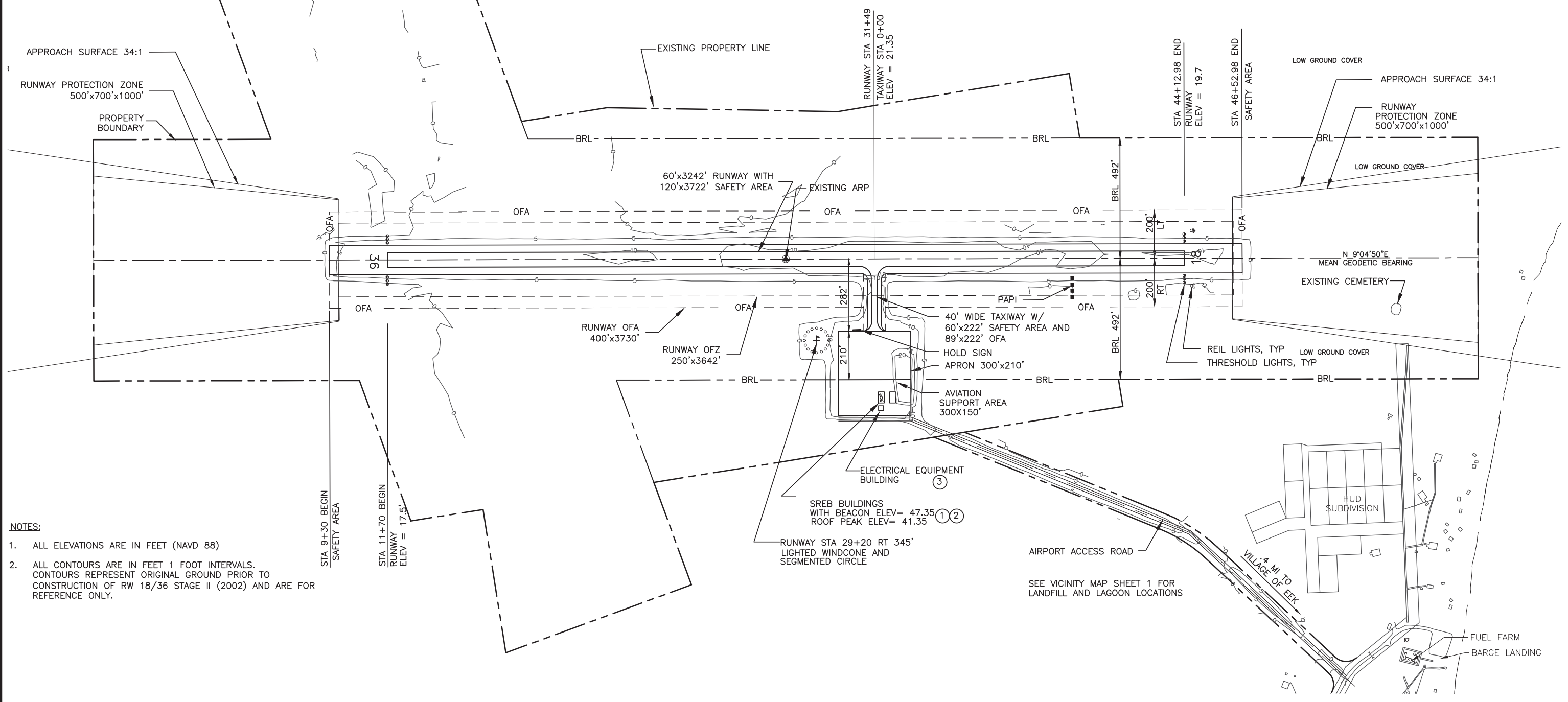
MAGNETIC DECLINATION 9°28'E
MARCH 2025



HORIZONTAL GRAPHIC SCALE

BUILDING DATA TABLE				
ID #	DESCRIPTION	STATION/OFFSET	TOP ELEV (MSL)	OBSTRUCT MARKING
1	SREB #1	31+76/542' RT	48'	
2	SREB #2	32+22/542' RT	41'	
3	AIRPORT ELEC. EQUIP.	31+76/598' RT	29'	

Date Plotted: 13/07/2025, 1:47 PM
 Layout Name: existing
 File Name: W:\Projects\EEK\ALP\EEK_2007\Airport_Layout_Plan\ALP-AS-BUILD_2006\Drawings\EEK_ALP.dwg
 Designed By: rburnett
 Drawn By:
 Checked By:



- NOTES:**
- ALL ELEVATIONS ARE IN FEET (NAVD 88)
 - ALL CONTOURS ARE IN FEET 1 FOOT INTERVALS. CONTOURS REPRESENT ORIGINAL GROUND PRIOR TO CONSTRUCTION OF RW 18/36 STAGE II (2002) AND ARE FOR REFERENCE ONLY.

BY	DATE	REVISION
RJB	03/07/2025	UPDATED RUNWAY NUMBERS

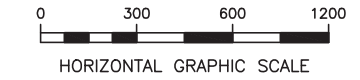
STATE OF ALASKA
DEPARTMENT OF TRANSPORTATION
AND PUBLIC FACILITIES
CENTRAL REGION

EEK AIRPORT
 EEK, ALASKA
 AIRPORT LAYOUT PLAN
 EXISTING AIRPORT PLAN

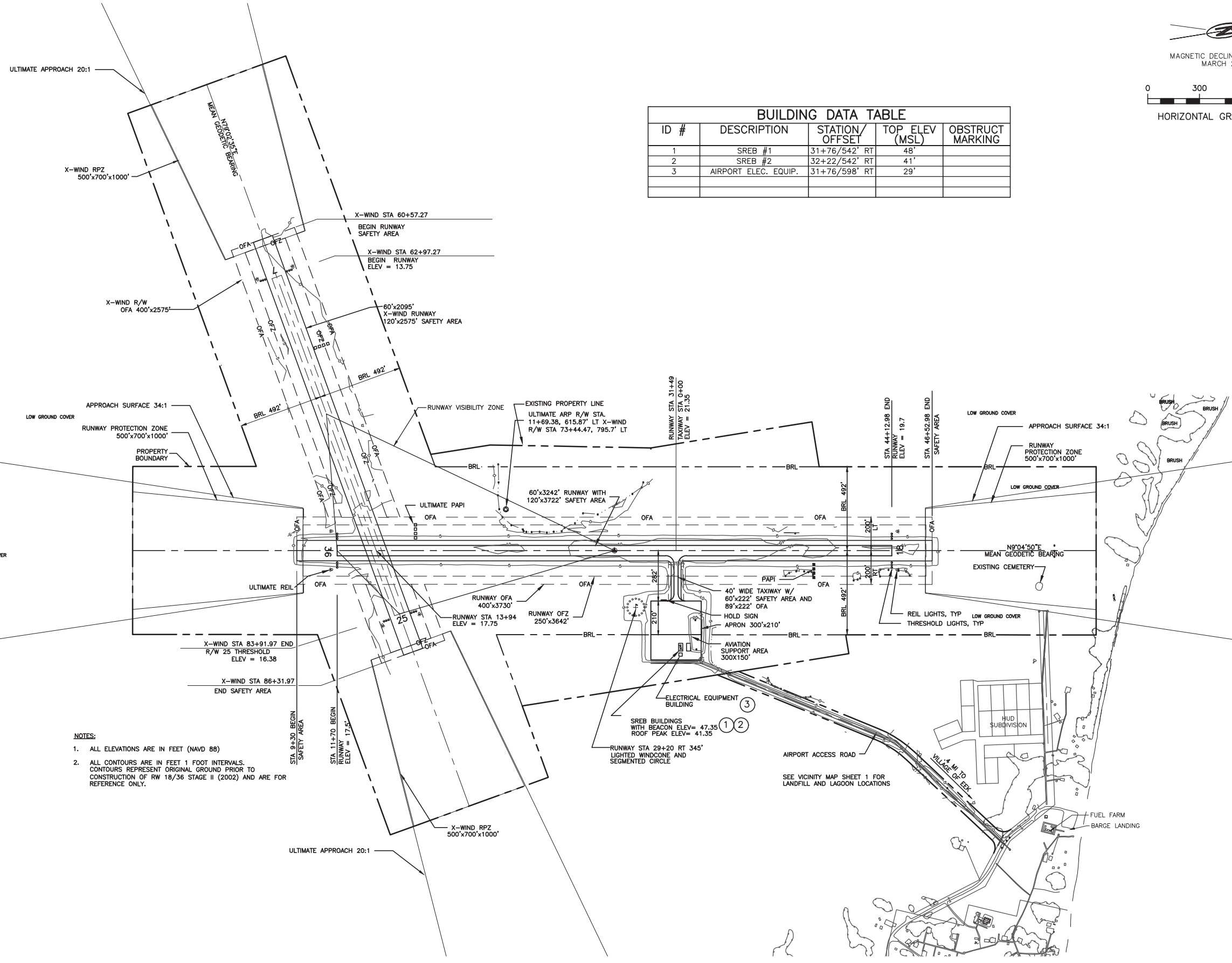
DATE: 7/7/06
 SHEET: 2 OF 7



MAGNETIC DECLINATION 9°28'E
MARCH 2025



BUILDING DATA TABLE				
ID #	DESCRIPTION	STATION/OFFSET	TOP ELEV (MSL)	OBSTRUCT MARKING
1	SREB #1	31+76/542' RT	48'	
2	SREB #2	32+22/542' RT	41'	
3	AIRPORT ELEC. EQUIP.	31+76/598' RT	29'	



- NOTES:**
1. ALL ELEVATIONS ARE IN FEET (NAVD 88)
 2. ALL CONTOURS ARE IN FEET 1 FOOT INTERVALS. CONTOURS REPRESENT ORIGINAL GROUND PRIOR TO CONSTRUCTION OF RW 18/36 STAGE II (2002) AND ARE FOR REFERENCE ONLY.

Date Plotted: 3/07/2025, 1:47 PM
 Layout Name: ultimate
 File Name: W:\Projects\EEK\ALP\EEK_2007\Airport_Layout_Plan\ALP_AS_BUILT_2006\Drawings\EEK_ALP.dwg
 Designed By: rburnett
 Drawn By:
 Checked By:

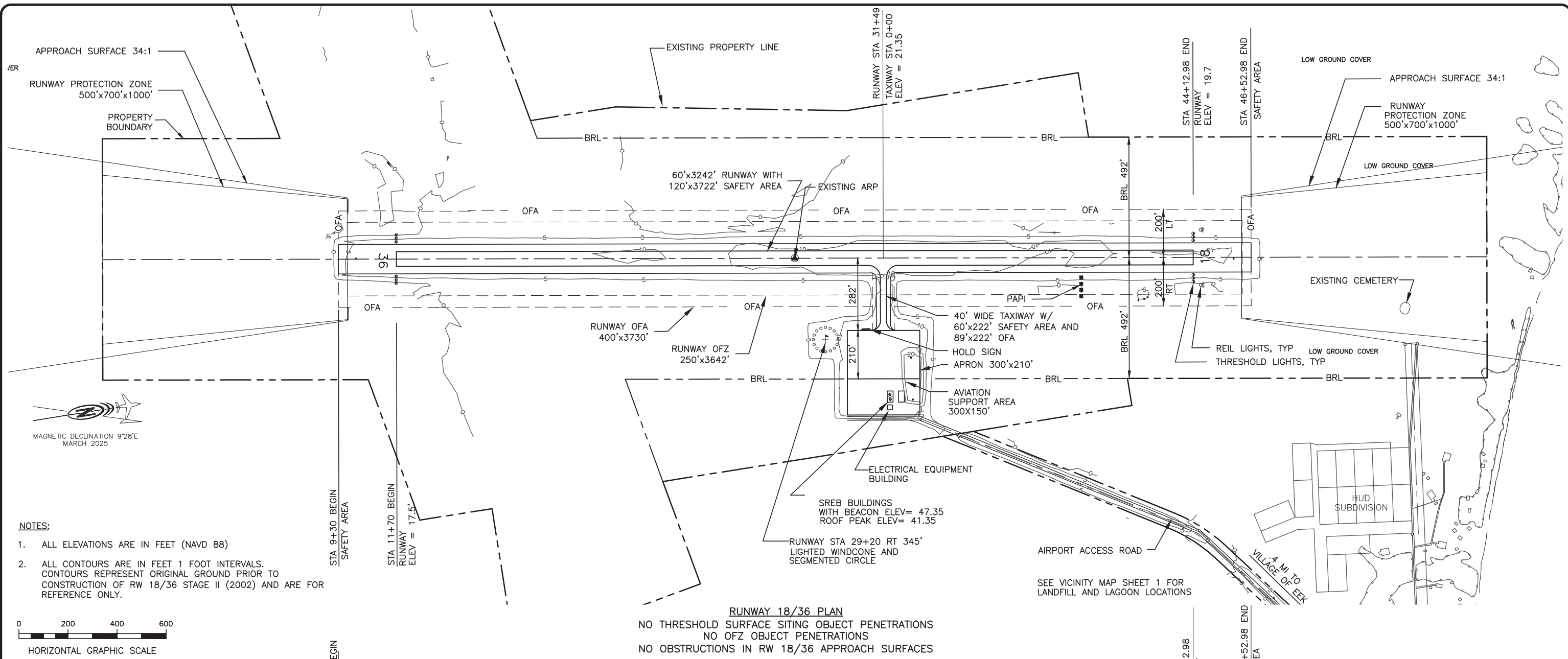
BY	DATE	REVISION
RJB	03/07/2025	UPDATED RUNWAY NUMBERS

STATE OF ALASKA
DEPARTMENT OF TRANSPORTATION
AND PUBLIC FACILITIES
CENTRAL REGION

EEK AIRPORT
 EEK, ALASKA
 AIRPORT LAYOUT PLAN
 AIRPORT ULTIMATE
 DEVELOPMENT PLAN

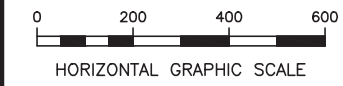
DATE: 7/7/06
 SHEET: 3 OF 7

Date Plotted: 13/07/2025, 1:47 PM
 Layout Name: 18-36 PROFILE
 File Name: W:\Projects\EEK\ALP\EEK_2007\Airport_Layout_Plan\ALP_AS_BUILT_2006\Drawings\EEK_ALP.dwg
 Designed By: rburnett
 Drawn By:
 Checked By:

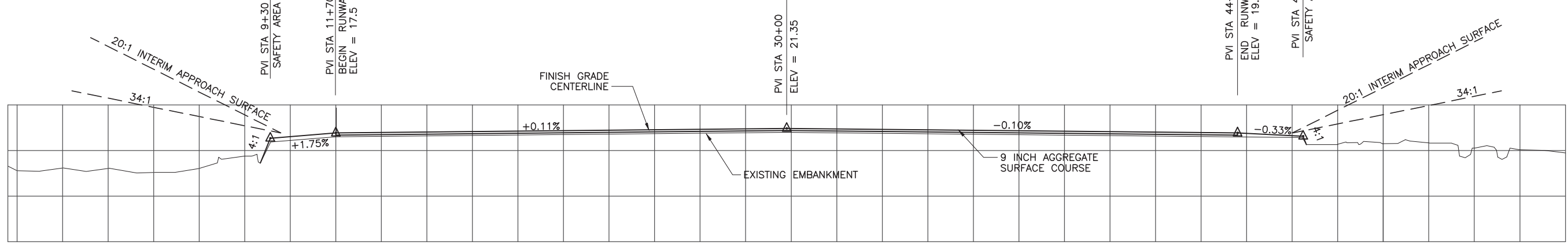


MAGNETIC DECLINATION 9°28'E
MARCH 2025

- NOTES:**
- ALL ELEVATIONS ARE IN FEET (NAVD 88)
 - ALL CONTOURS ARE IN FEET 1 FOOT INTERVALS. CONTOURS REPRESENT ORIGINAL GROUND PRIOR TO CONSTRUCTION OF RW 18/36 STAGE II (2002) AND ARE FOR REFERENCE ONLY.



RUNWAY 18/36 PLAN
 NO THRESHOLD SURFACE SITING OBJECT PENETRATIONS
 NO OFZ OBJECT PENETRATIONS
 NO OBSTRUCTIONS IN RW 18/36 APPROACH SURFACES



RUNWAY 18/36 PROFILE

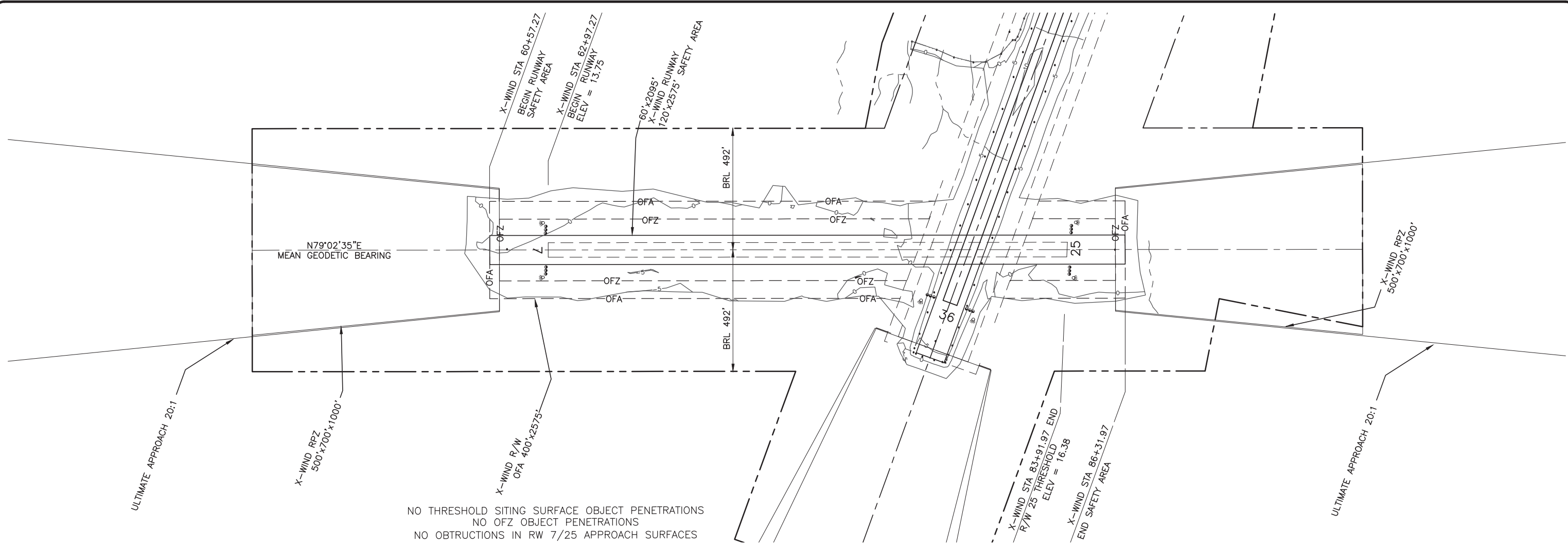
BY	DATE	REVISION
RJB	03/07/2025	UPDATED RUNWAY NUMBERS

STATE OF ALASKA
DEPARTMENT OF TRANSPORTATION
AND PUBLIC FACILITIES
 CENTRAL REGION

EEK AIRPORT
 EEK, ALASKA
 AIRPORT LAYOUT PLAN
 RUNWAY 18/36 INNER APPROACH

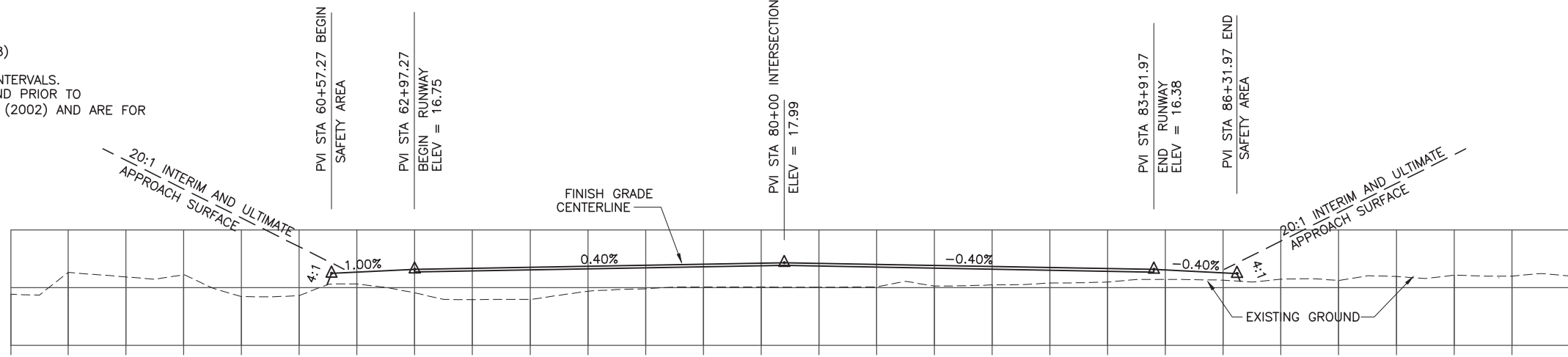
DATE: 7/7/06
 SHEET: 4 OF 7

Date Plotted: 3/07/2025, 1:47 PM
 Layout Name: 7-25 PROFILE
 File Name: W:\Projects\EEK\AIP_2007\Report_Layout\Plan\AIP-AS_BUILT_2008\Drawings\EEK_AIP.dwg
 Designed By: rburnett
 Drawn By:
 Checked By:



RUNWAY 7/25 PLAN

- NOTES:**
1. ALL ELEVATIONS ARE IN FEET (NAVD 88)
 2. ALL CONTOURS ARE IN FEET 1 FOOT INTERVALS. CONTOURS REPRESENT ORIGINAL GROUND PRIOR TO CONSTRUCTION OF RW 18/36 STAGE II (2002) AND ARE FOR REFERENCE ONLY.



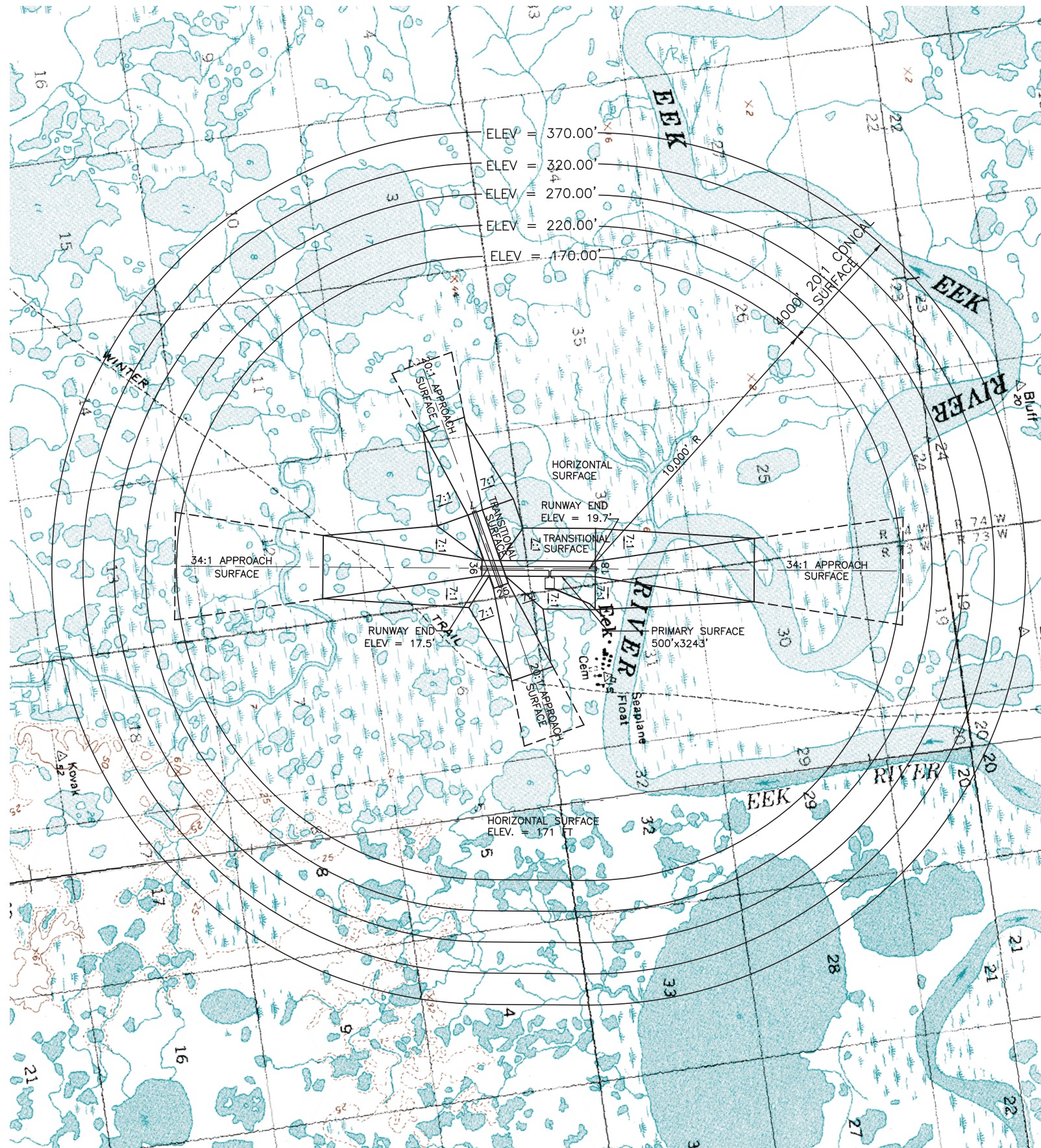
BY	DATE	REVISION
RJB	03/07/2025	UPDATED RUNWAY NUMBERS

STATE OF ALASKA
DEPARTMENT OF TRANSPORTATION
AND PUBLIC FACILITIES
CENTRAL REGION

EEK AIRPORT
 EEK, ALASKA
 AIRPORT LAYOUT PLAN
 RUNWAY 7/25 INNER APPROACH

DATE:
 7/7/06
 SHEET:
 5
 OF
 7

Date Plotted: 3/07/2025, 1:47 PM
 Layout Name: W:\Projects\EEK\ALP_2007\Airport_Layout_Plan\ALP-AS_BULL_2006\Drawings\F.A.R.Part 77.dwg
 File Name:
 Designed By: riburnett
 Drawn By:
 Checked By:



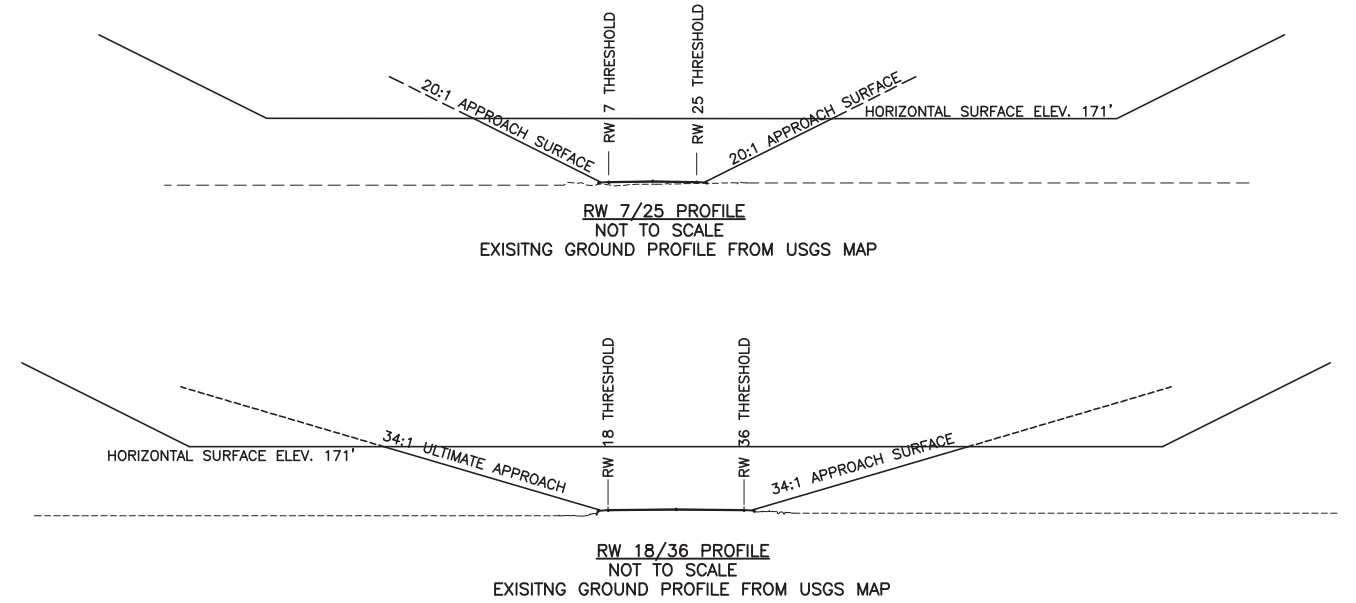
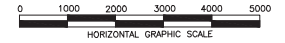
PART 77 SURFACE OBSTRUCTIONS TABLE								
ID #	DESCRIPTION	STATION/OFFSET	ELEVATION	SURFACE PENETRATED	SURFACE ELEVATION	AMOUNT PENETRATION	DISPOSITION	STAGE TO CORRECT
	NONE							

NOTES:

1. PRIMARY SURFACE WIDTH IS 500'
2. DESIGNATED AIRPORT ELEVATION IS 21.4'
3. ALL CONTOURS ARE IN FEET.



MAGNETIC DECLINATION 09°28'E
MARCH 2025



RJB	03/07/2025	UPDATED RUNWAY NUMBERS
BY	DATE	REVISION

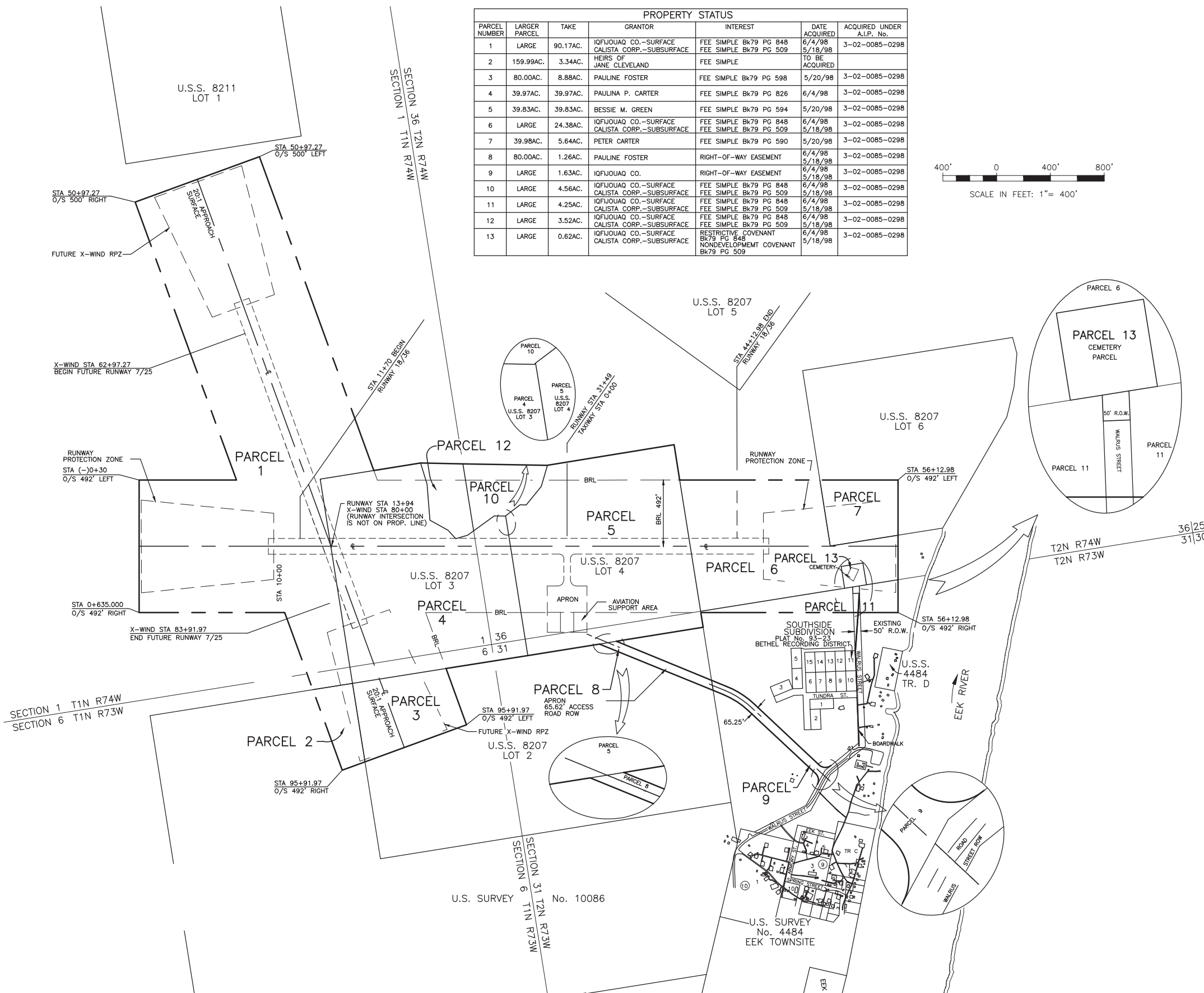
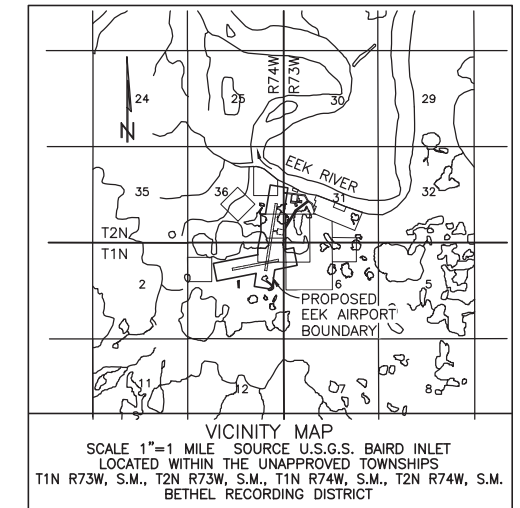
STATE OF ALASKA
 DEPARTMENT OF TRANSPORTATION
 AND PUBLIC FACILITIES
 CENTRAL REGION

EEK AIRPORT
 EEK, ALASKA
 AIRPORT LAYOUT PLAN
 F.A.R. PART 77

DATE: 07/7/06
 SHEET: 6 OF 7

Date Plotted: 3/07/2025, 1:47 PM
 Layout Name: W:\Projects\Eek\ALP_2007\Airport_Layout_Plan\ALP-AS_BUILT_2008\Drawings\PropertyMap.dwg
 File Name: rburnett
 Designed By: rburnett
 Drawn By:
 Checked By:

PROPERTY STATUS						
PARCEL NUMBER	LARGER PARCEL	TAKE	GRANTOR	INTEREST	DATE ACQUIRED	ACQUIRED UNDER A.I.P. No.
1	LARGE	90.17AC.	IQFIJOUAQ CO.-SURFACE CALISTA CORP.-SUBSURFACE	FEE SIMPLE Bk79 PG 848 FEE SIMPLE Bk79 PG 509	6/4/98 5/18/98	3-02-0085-0298
2	159.99AC.	3.34AC.	HEIRS OF JANE CLEVELAND	FEE SIMPLE	TO BE ACQUIRED	
3	80.00AC.	8.88AC.	PAULINE FOSTER	FEE SIMPLE Bk79 PG 598	5/20/98	3-02-0085-0298
4	39.97AC.	39.97AC.	PAULINA P. CARTER	FEE SIMPLE Bk79 PG 826	6/4/98	3-02-0085-0298
5	39.83AC.	39.83AC.	BESSIE M. GREEN	FEE SIMPLE Bk79 PG 594	5/20/98	3-02-0085-0298
6	LARGE	24.38AC.	IQFIJOUAQ CO.-SURFACE CALISTA CORP.-SUBSURFACE	FEE SIMPLE Bk79 PG 848 FEE SIMPLE Bk79 PG 509	6/4/98 5/18/98	3-02-0085-0298
7	39.98AC.	5.64AC.	PETER CARTER	FEE SIMPLE Bk79 PG 590	5/20/98	3-02-0085-0298
8	80.00AC.	1.26AC.	PAULINE FOSTER	RIGHT-OF-WAY EASEMENT	6/4/98 5/18/98	3-02-0085-0298
9	LARGE	1.63AC.	IQFIJOUAQ CO.	RIGHT-OF-WAY EASEMENT	6/4/98 5/18/98	3-02-0085-0298
10	LARGE	4.56AC.	IQFIJOUAQ CO.-SURFACE CALISTA CORP.-SUBSURFACE	FEE SIMPLE Bk79 PG 848 FEE SIMPLE Bk79 PG 509	6/4/98 5/18/98	3-02-0085-0298
11	LARGE	4.25AC.	IQFIJOUAQ CO.-SURFACE CALISTA CORP.-SUBSURFACE	FEE SIMPLE Bk79 PG 848 FEE SIMPLE Bk79 PG 509	6/4/98 5/18/98	3-02-0085-0298
12	LARGE	3.52AC.	IQFIJOUAQ CO.-SURFACE CALISTA CORP.-SUBSURFACE	FEE SIMPLE Bk79 PG 848 FEE SIMPLE Bk79 PG 509	6/4/98 5/18/98	3-02-0085-0298
13	LARGE	0.82AC.	IQFIJOUAQ CO.-SURFACE CALISTA CORP.-SUBSURFACE	RESTRICTIVE COVENANT Bk79 PG 848 NONDEVELOPMENT COVENANT Bk79 PG 509	6/4/98 5/18/98	3-02-0085-0298



LEGEND
 - - - - - EXTERIOR AIRPORT PROPERTY BOUNDARY
 _____ INTERIOR AIRPORT PARCEL BOUNDARY

RJB	03/07/2025	UPDATED RUNWAY NUMBERS
BY	DATE	REVISION

STATE OF ALASKA
DEPARTMENT OF TRANSPORTATION
AND PUBLIC FACILITIES
CENTRAL REGION

Eek AIRPORT
 Eek, ALASKA
 AIRPORT LAYOUT PLAN
 AIRPORT PROPERTY MAP

DATE: 7/7/06
 SHEET: 7 OF 7