
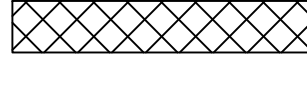

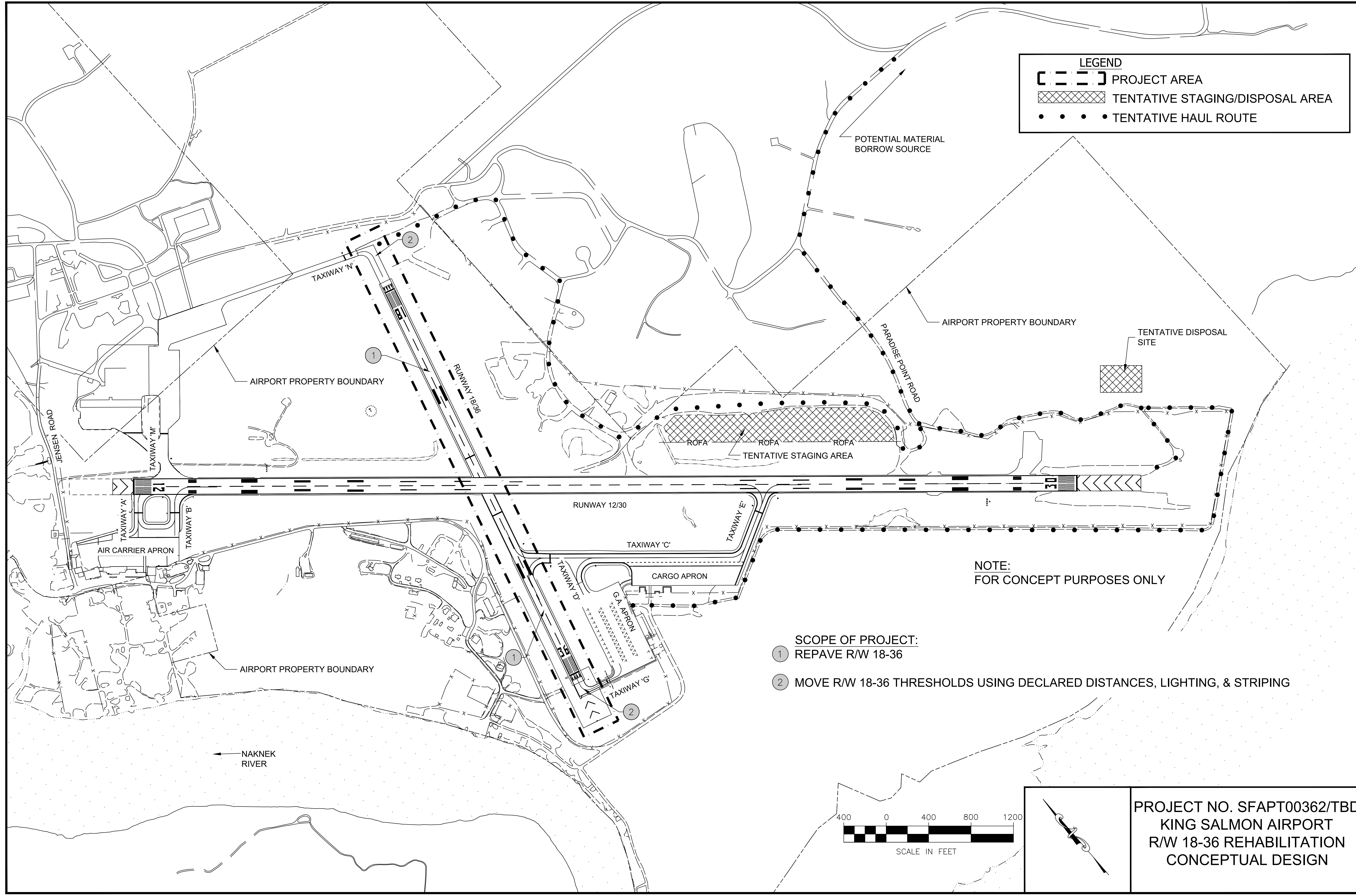


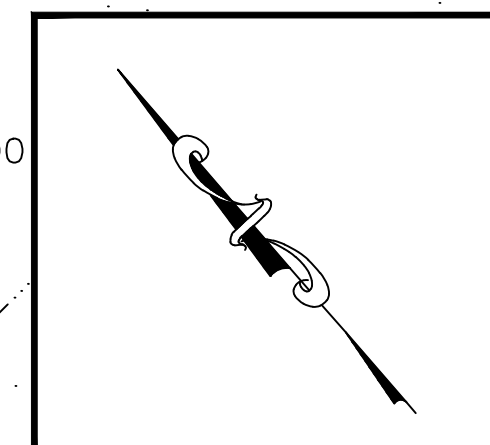
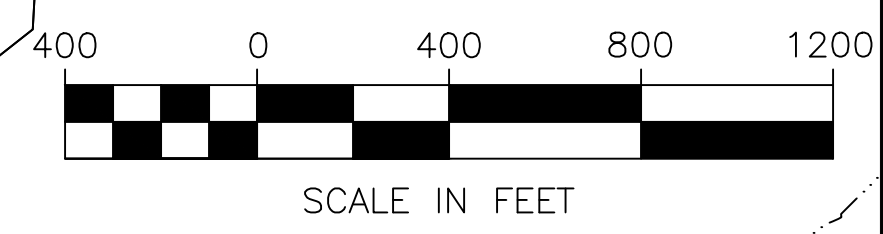
LEGEND

-  PROJECT AREA
-  TENTATIVE STAGING/DISPOSAL AREA
-  TENTATIVE HAUL ROUTE



NOTE:
FOR CONCEPT PURPOSES ONLY

- SCOPE OF PROJECT:**
- ① REPAVE R/W 18-36
 - ② MOVE R/W 18-36 THRESHOLDS USING DECLARED DISTANCES, LIGHTING, & STRIPING



PROJECT NO. SFAPT00362/TBD
KING SALMON AIRPORT
R/W 18-36 REHABILITATION
CONCEPTUAL DESIGN