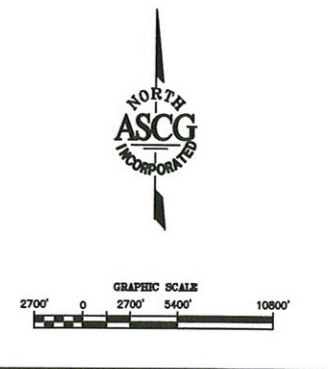
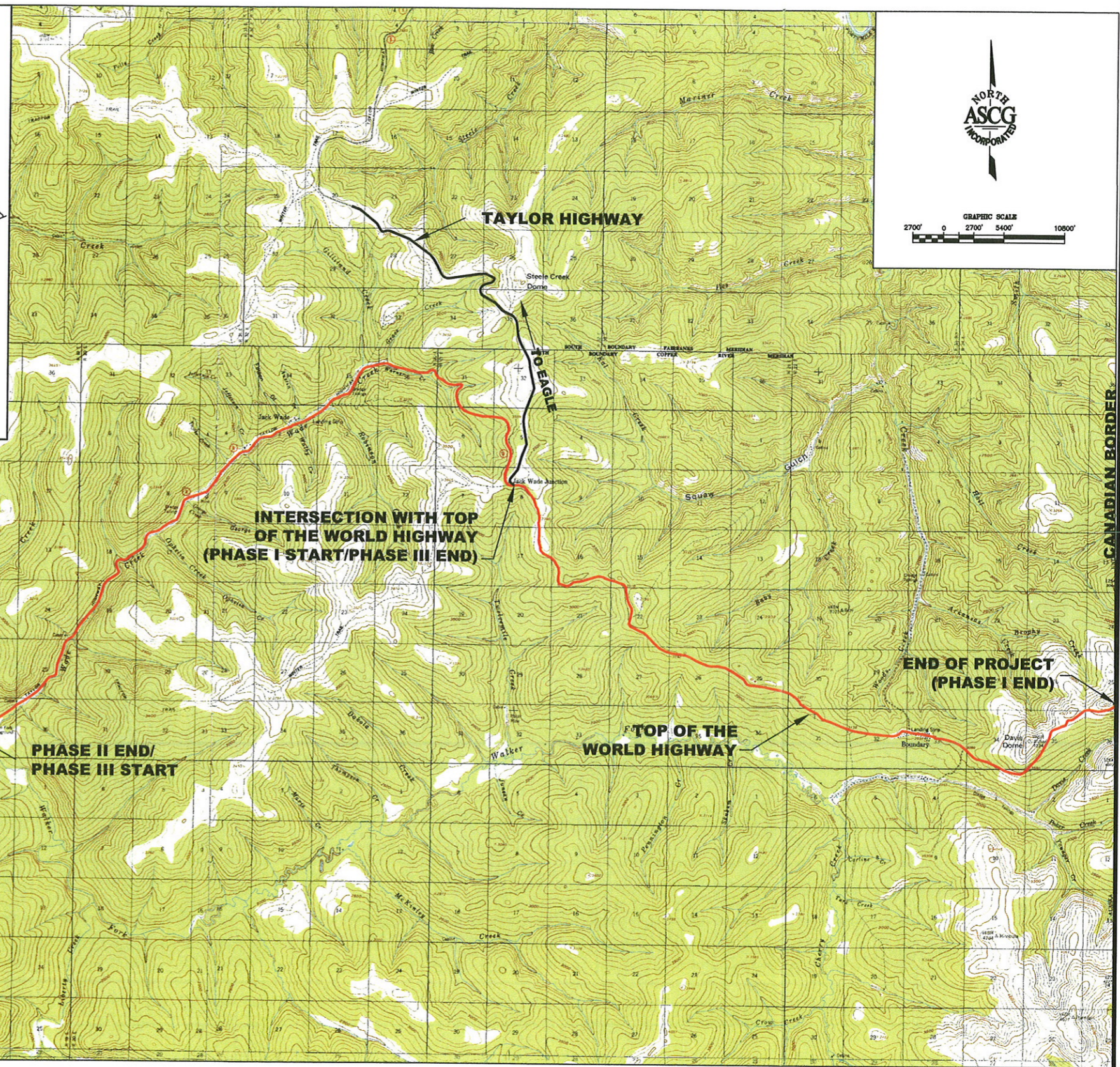
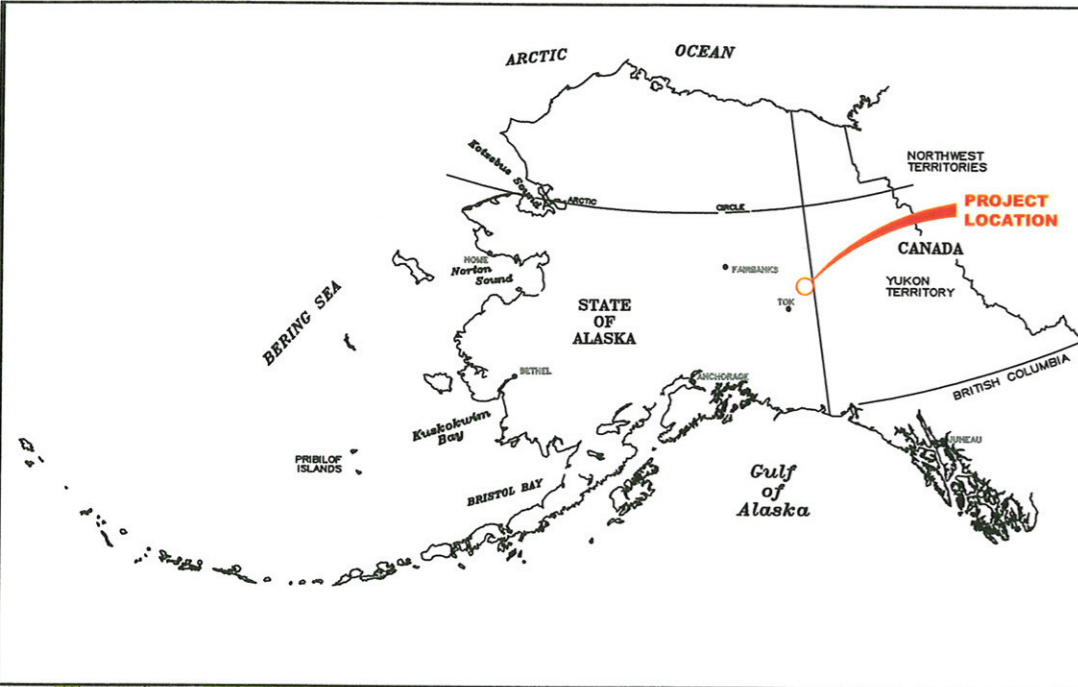


# FIGURES

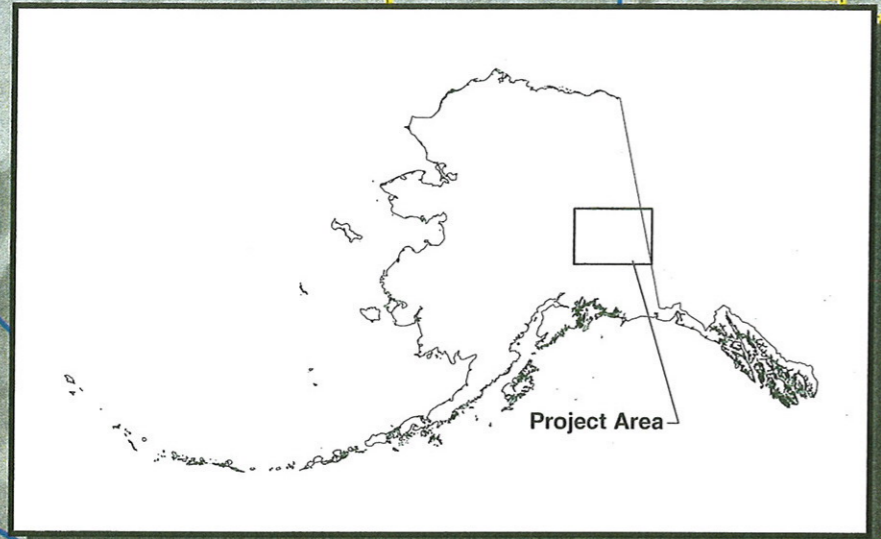


TAYLOR HIGHWAY MP 645  
TO THE  
CANADIAN BORDER

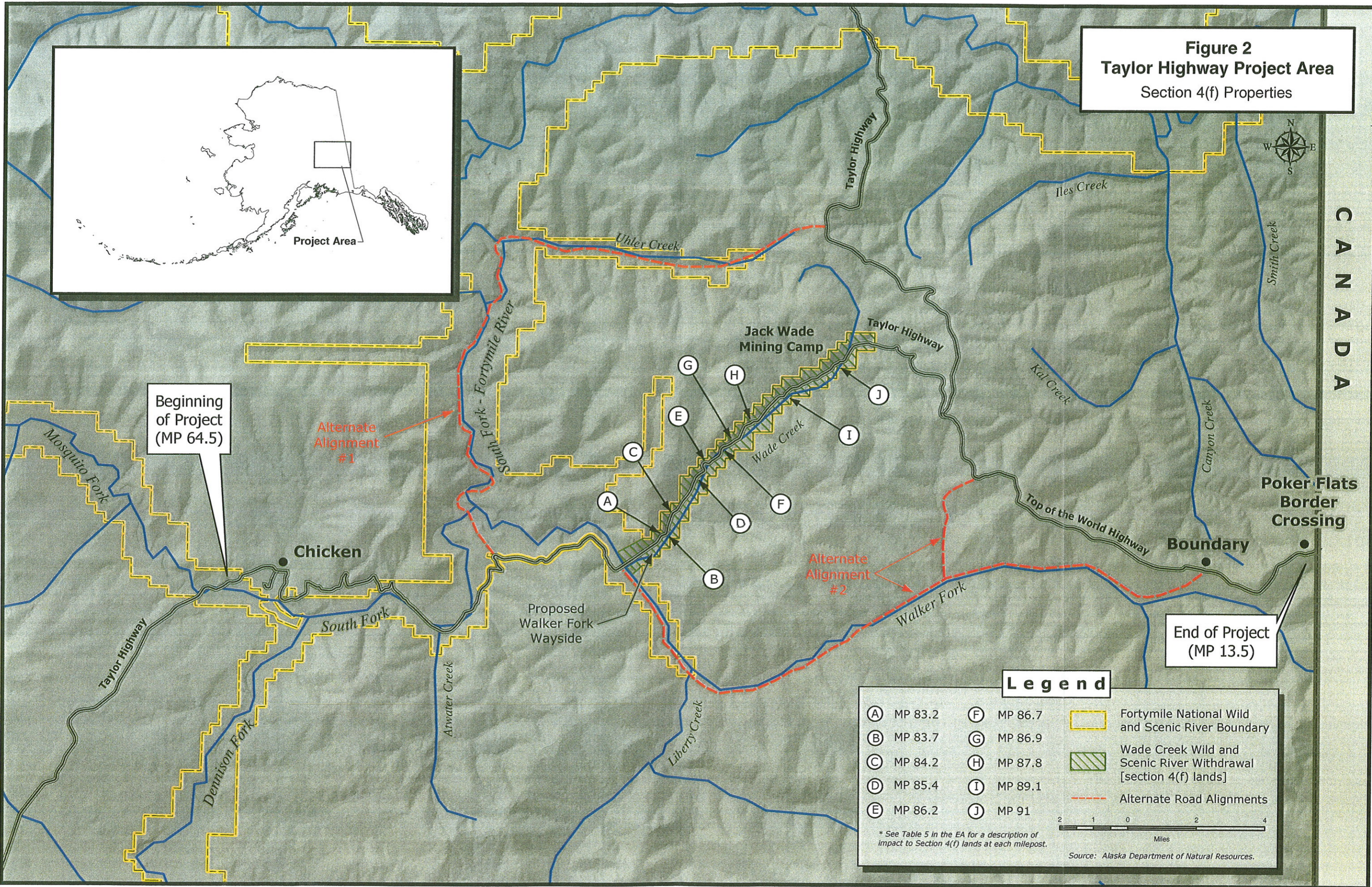
SITE LOCATION AND VICINITY  
FIGURE 1

JOB NO:	4444
DATE:	11/12/02
DRAWN BY:	DRM
CHECKED BY:	KKS

**Figure 2**  
**Taylor Highway Project Area**  
 Section 4(f) Properties



CANADA



Beginning of Project (MP 64.5)

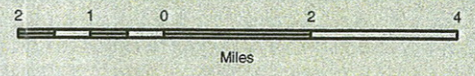
Alternate Alignment #1

Alternate Alignment #2

End of Project (MP 13.5)

**Legend**

(A) MP 83.2	(F) MP 86.7	Fortymile National Wild and Scenic River Boundary
(B) MP 83.7	(G) MP 86.9	Wade Creek Wild and Scenic River Withdrawal [section 4(f) lands]
(C) MP 84.2	(H) MP 87.8	Alternate Road Alignments
(D) MP 85.4	(I) MP 89.1	
(E) MP 86.2	(J) MP 91	

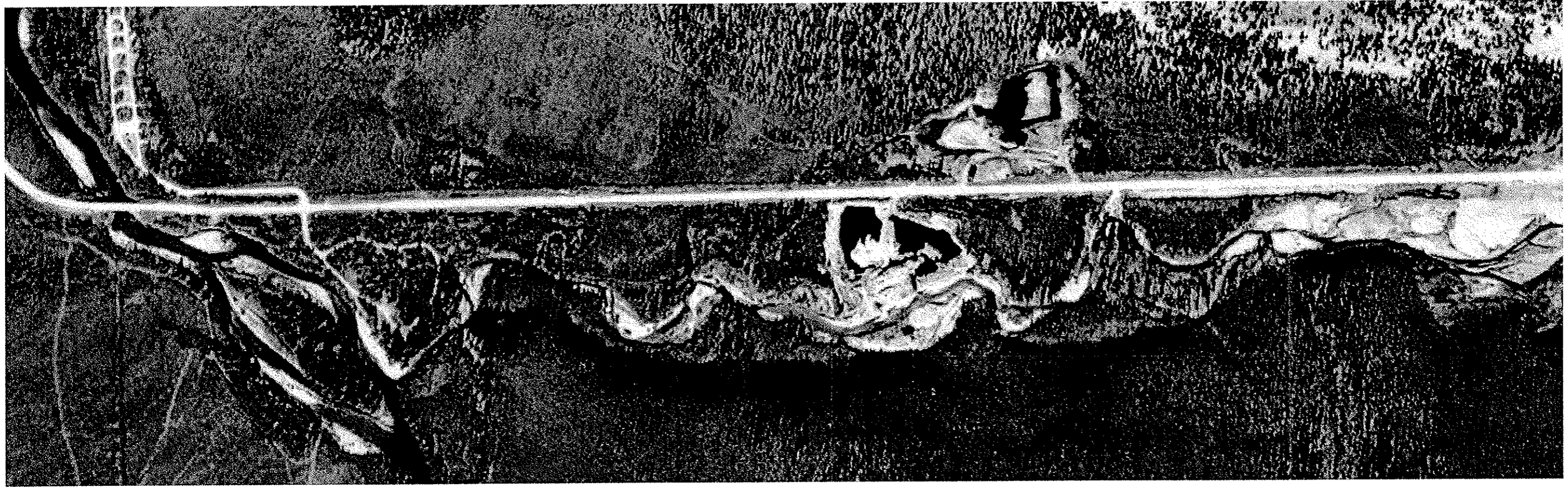


\* See Table 5 in the EA for a description of impact to Section 4(f) lands at each milepost.

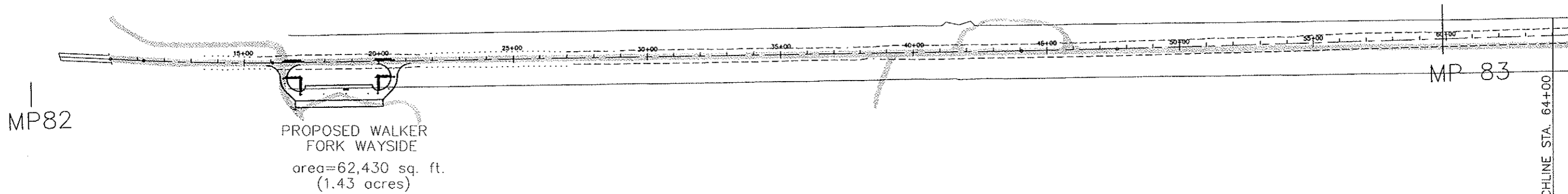
Source: Alaska Department of Natural Resources.



TAYLOR HIGHWAY MP 64.5  
TO  
CANADA BORDER



SOURCE: BLM, 5-15-94



PROPOSED WALKER  
FORK WAYSIDE  
area=62,430 sq. ft.  
(1.43 acres)

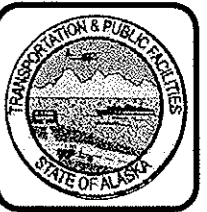
- LEGEND**
- 200 R.O.W.
  - MINING CLAIMS
  - CATCH POINTS
  - CENTERLINE STATIONS
  - EXISTING ROAD
  - area 7,235 sq.ft. ADDITIONAL R.O.W.
  - MP 86 MILE POST
  - SECTION CALLOUT FOR BOXED DETAIL

SOURCE: ADOT, JUNE 2003

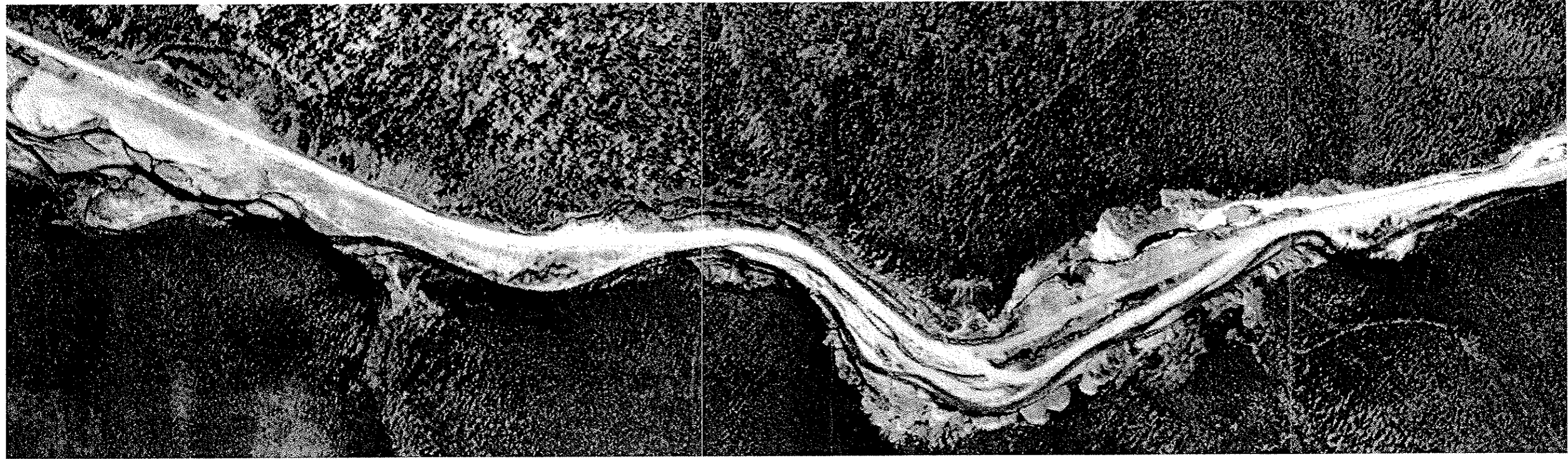
SECTION 4(f) PROPERTIES  
FIGURE 3

JOB NO:	4444
DATE:	JULY-2003
DRAWN BY:	KML
CHECKED BY:	BM

...1116... Taylor.../EA/...ES-K...JROW...003.dwg

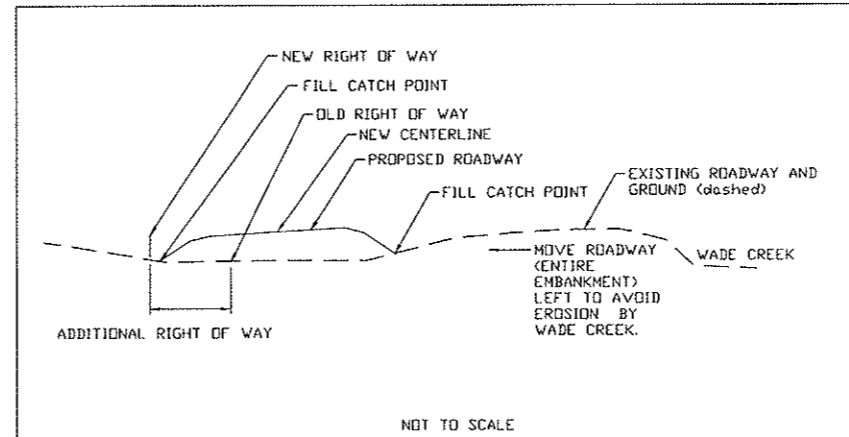


TAYLOR HIGHWAY MP 64.5  
TO  
CANADA BORDER



AREA B SECTION B-B'

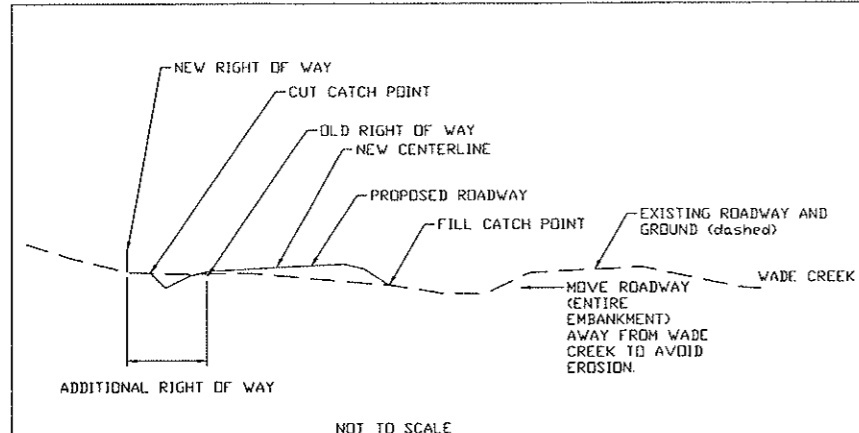
SOURCE: BLM, 5-15-94



A  
area 9,822 sq.ft.  
(0.23 acre)  
CATCH POINT

B  
area 4,602 sq. ft.  
(0.11 acre)  
CATCH POINT

AREA A SECTION A-A'



LEGEND

- 200 R.O.W.
- MINING CLAIMS
- CATCH POINTS
- CENTERLINE STATIONS
- EXISTING ROAD
- area 7,235 sq.ft.  
ADDITIONAL R.O.W.
- MP 86  
MILE POST
- SECTION CALLOUT FOR BOXED DETAIL

SOURCE: ADOT, JUNE 2003

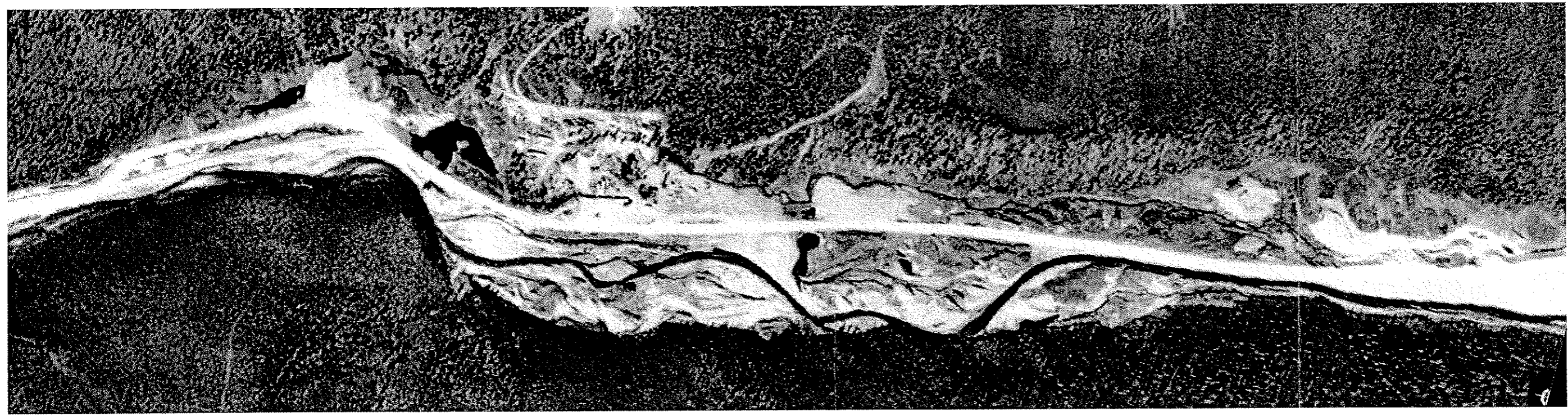
SECTION 4(f) PROPERTIES  
FIGURE 4

JOB NO: 4444  
DATE: JULY-2003  
DRAWN BY: KML  
CHECKED BY: SM

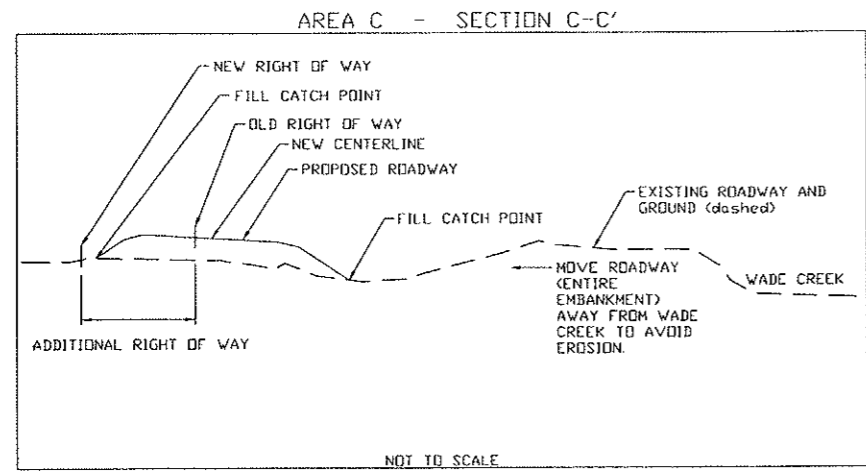
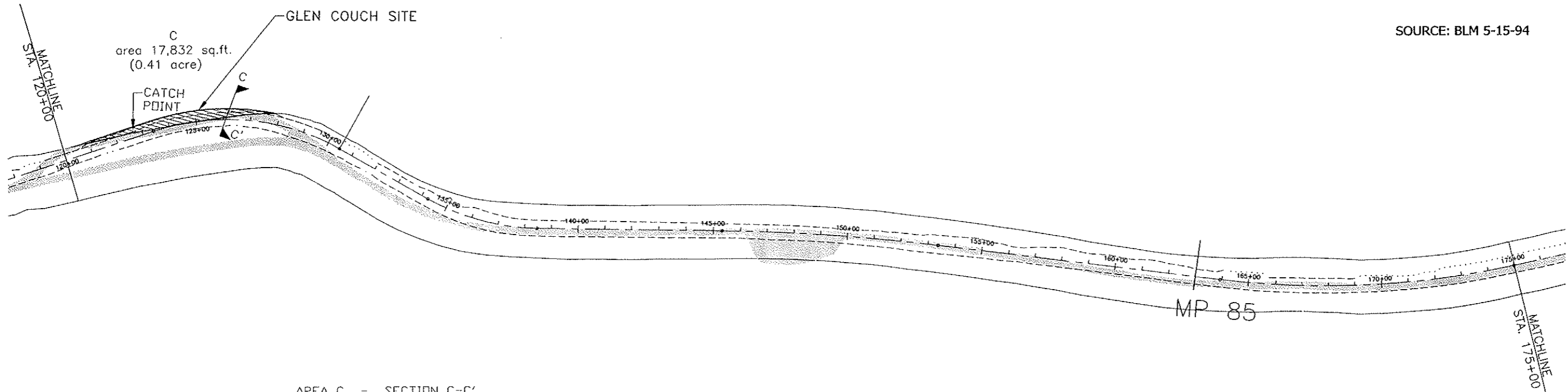
3/11/11 -Tay -YEA' ROW SES-K -ORO1 2003.



TAYLOR HIGHWAY MP 64.5  
TO  
CANADA BORDER



SOURCE: BLM 5-15-94



NOT TO SCALE

LEGEND

- 200 R.O.W.
- MINING CLAIMS
- CATCH POINTS
- CENTERLINE STATIONS
- EXISTING ROAD
- ADDITIONAL R.O.W.  
area 7,235 sq.ft.
- MILE POST  
MP 86
- SECTION CALLOUT  
FOR BOXED DETAIL



SOURCE: ADOT, JUNE 2003

SECTION 4(f) PROPERTIES  
FIGURE 5

JOB NO:	4444
DATE:	JULY-2003
DRAWN BY:	KML
CHECKED BY:	BM

BILL - T&P  
 YEAR  
 ROW  
 RES-K  
 08/01  
 2003



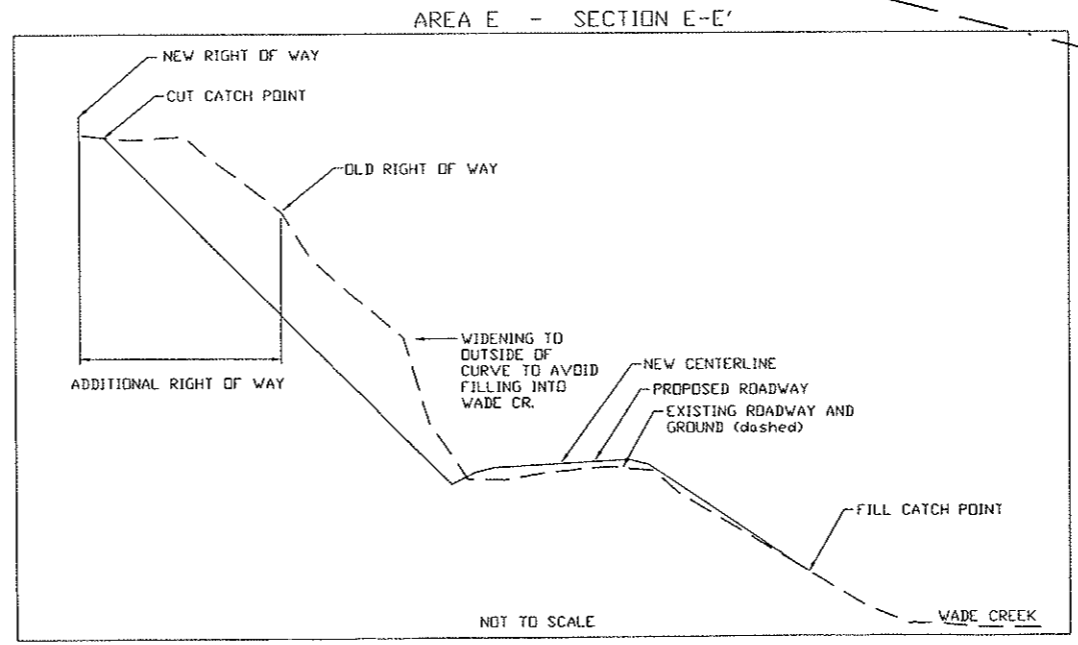
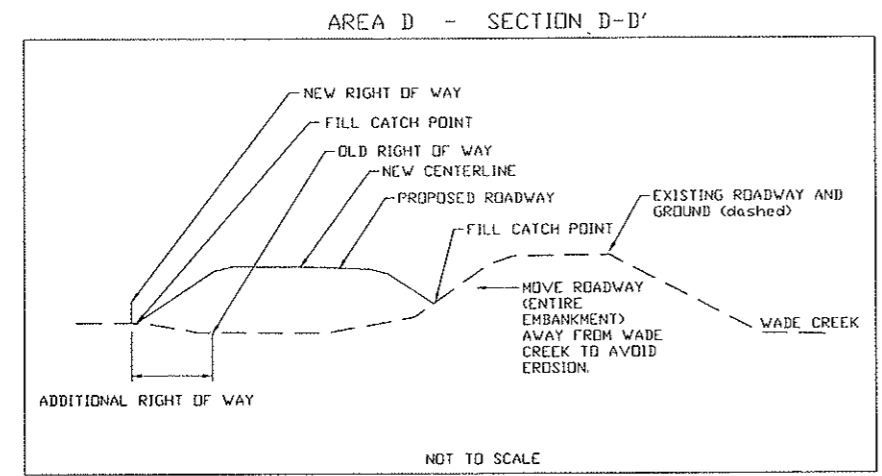
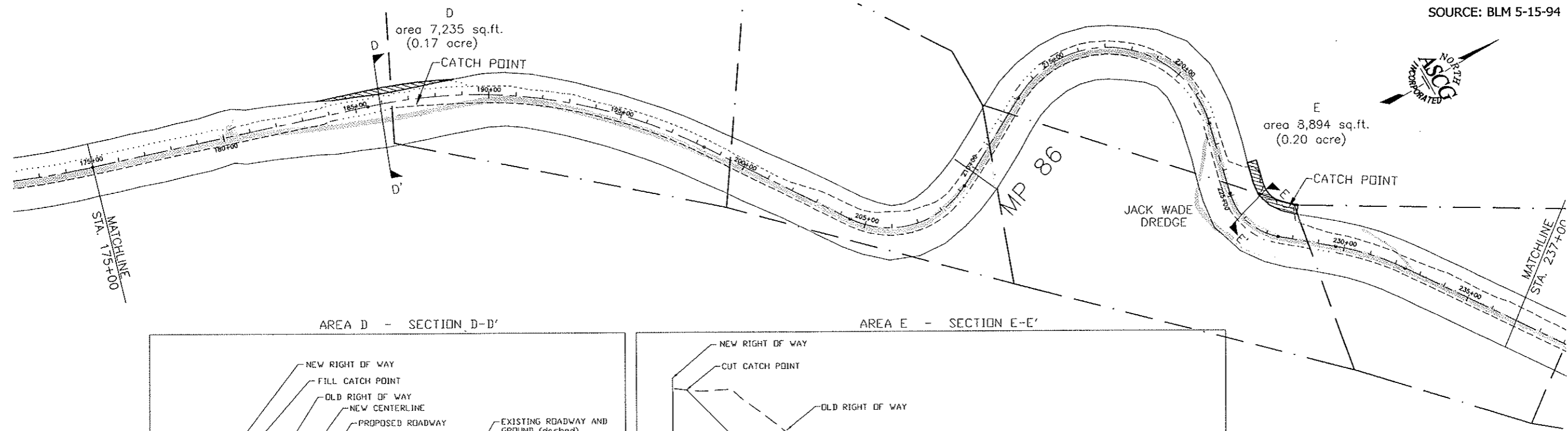
TAYLOR HIGHWAY MP 64.5  
TO  
CANADA BORDER

SECTION 4(f) PROPERTIES  
FIGURE 6

JOB NO: 4444  
DATE: JULY-2003  
DRAWN BY: KML  
CHECKED BY: BM



SOURCE: BLM 5-15-94



**LEGEND**

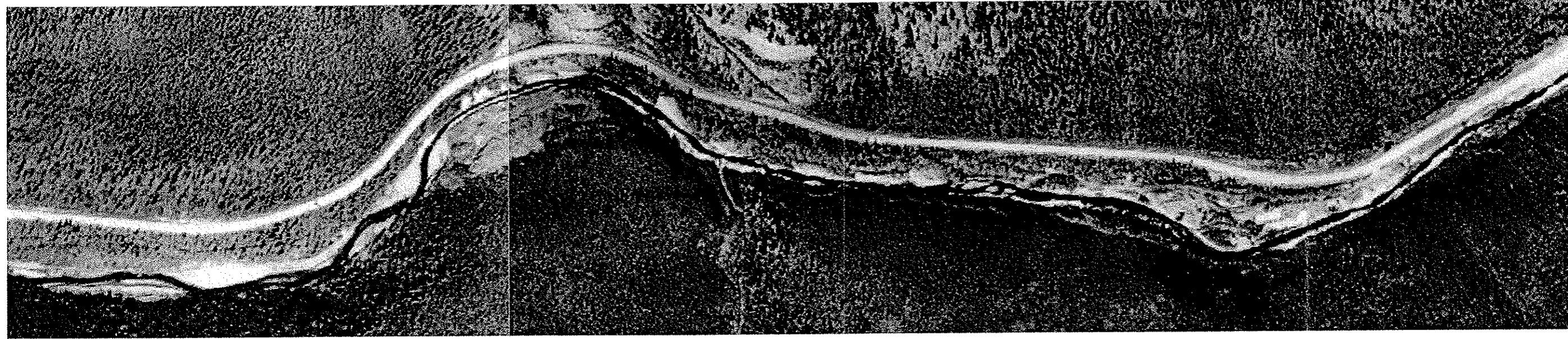
- 200 R.O.W.
- MINING CLAIMS
- CATCH POINTS
- CENTERLINE STATIONS
- EXISTING ROAD
- area 7,235 sq.ft. ADDITIONAL R.O.W.
- MILE POST
- SECTION CALLOUT FOR BOXED DETAIL

SOURCE: ADOT, JUNE 2003

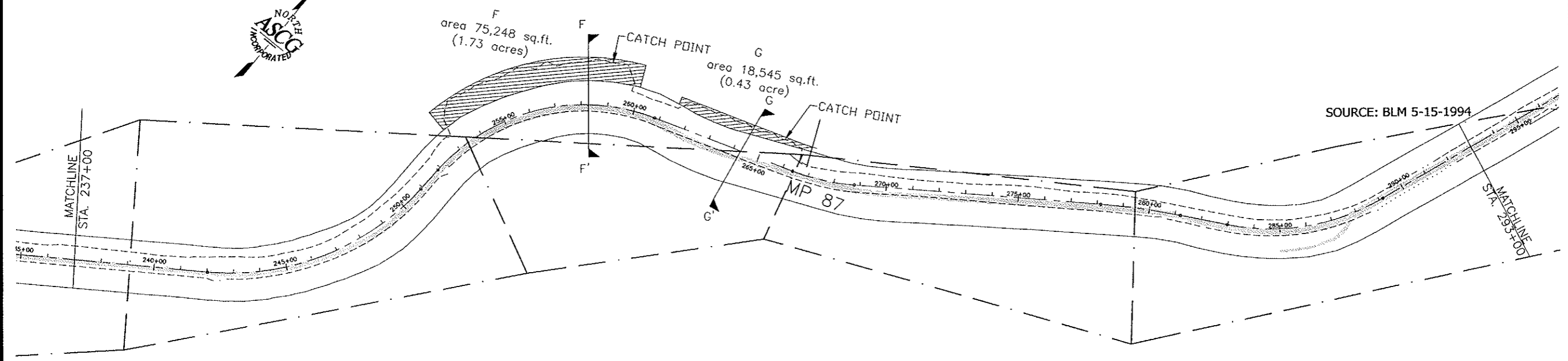
11111  
 Tay  
 y EA  
 OW  
 ES-K  
 DROY  
 0003.d



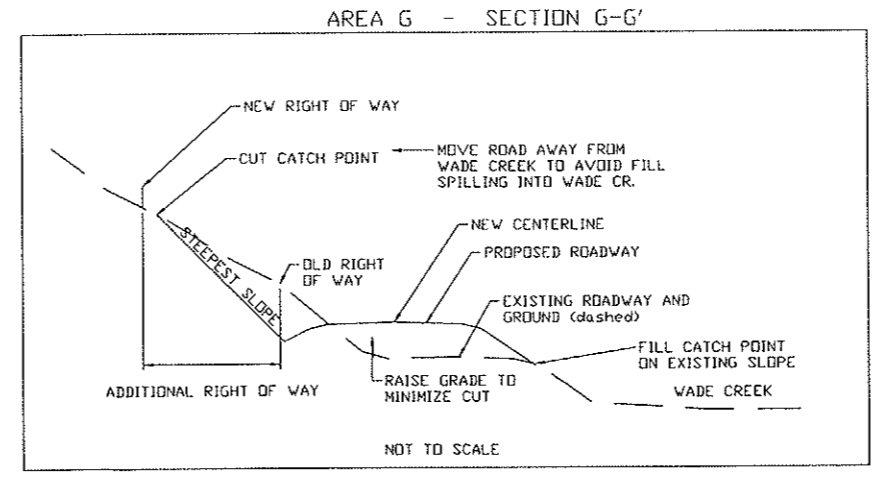
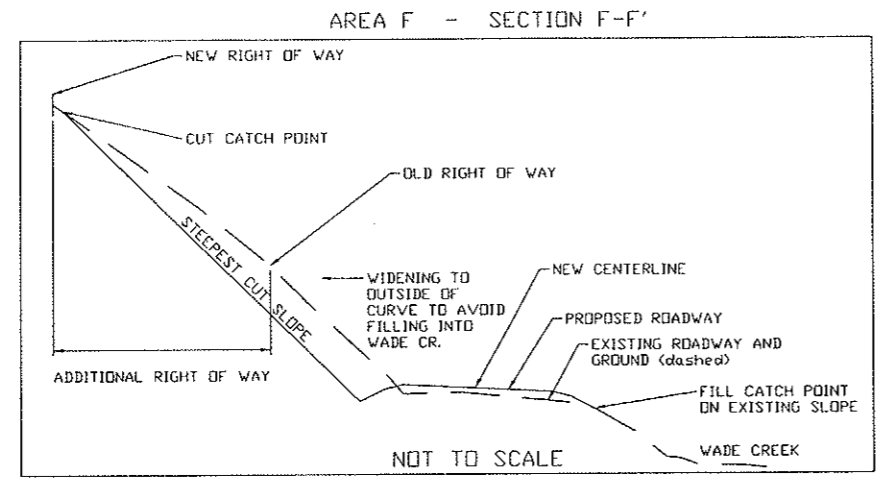
TAYLOR HIGHWAY MP 64.5  
TO  
CANADA BORDER



SOURCE: ADOT, JUNE 2003



SOURCE: BLM 5-15-1994



**LEGEND**

- 200 R.O.W.
- MINING CLAIMS
- CATCH POINTS
- CENTERLINE STATIONS
- EXISTING ROAD
- ADDITIONAL R.O.W.
- MILE POST
- SECTION CALLOUT FOR BOXED DETAIL

area 7,235 sq.ft.  
MP 86

SECTION 4(f) PROPERTIES  
FIGURE 7

JOB NO:	4444
DATE:	JULY-2003
DRAWN BY:	KML
CHECKED BY:	BM

31111 - Tay - y EA - ROW - RES-K - 0ROY - 2003

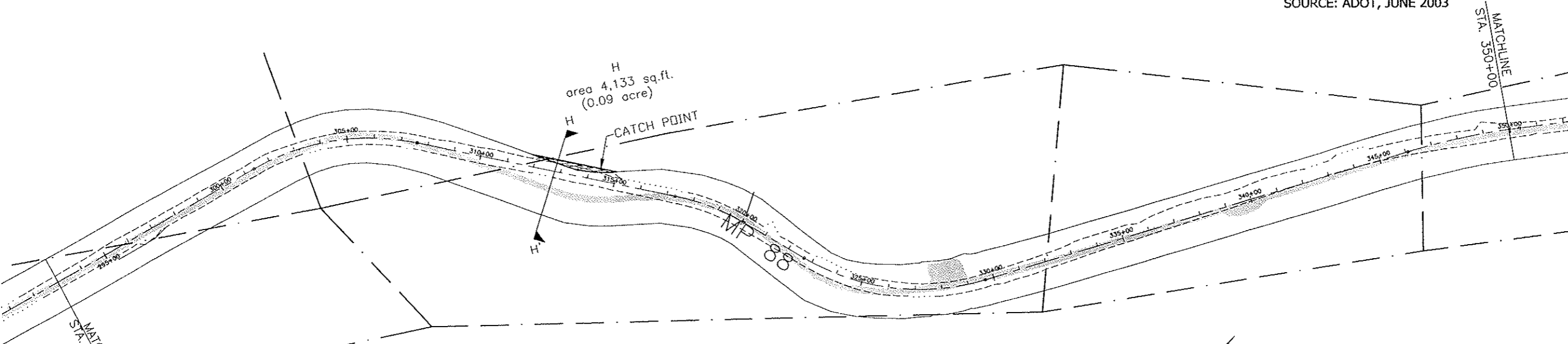




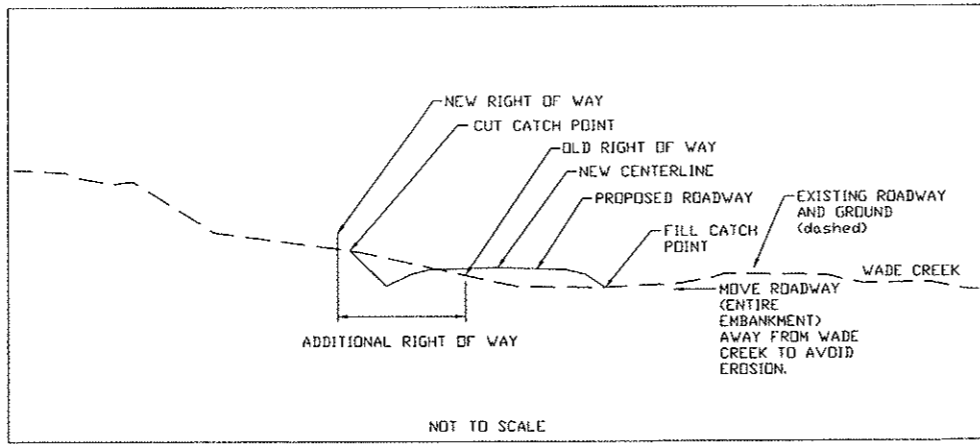
TAYLOR HIGHWAY MP 64.5  
TO  
CANADA BORDER



SOURCE: ADOT, JUNE 2003



AREA H - SECTION H-H'



LEGEND

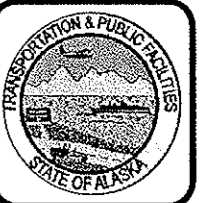
- 200 R.O.W.
- MINING CLAIMS
- CATCH POINTS
- CENTERLINE STATIONS
- EXISTING ROAD
- area 7,235 sq.ft.  
ADDITIONAL R.O.W.
- MP 86  
MILE POST
- SECTION CALLOUT FOR BOXED DETAIL

SOURCE: BLM 5-15-2003

SECTION 4(f) PROPERTIES  
FIGURE 8

JOB NO:	4444
DATE:	JULY-2003
DRAWN BY:	KML
CHECKED BY:	BM

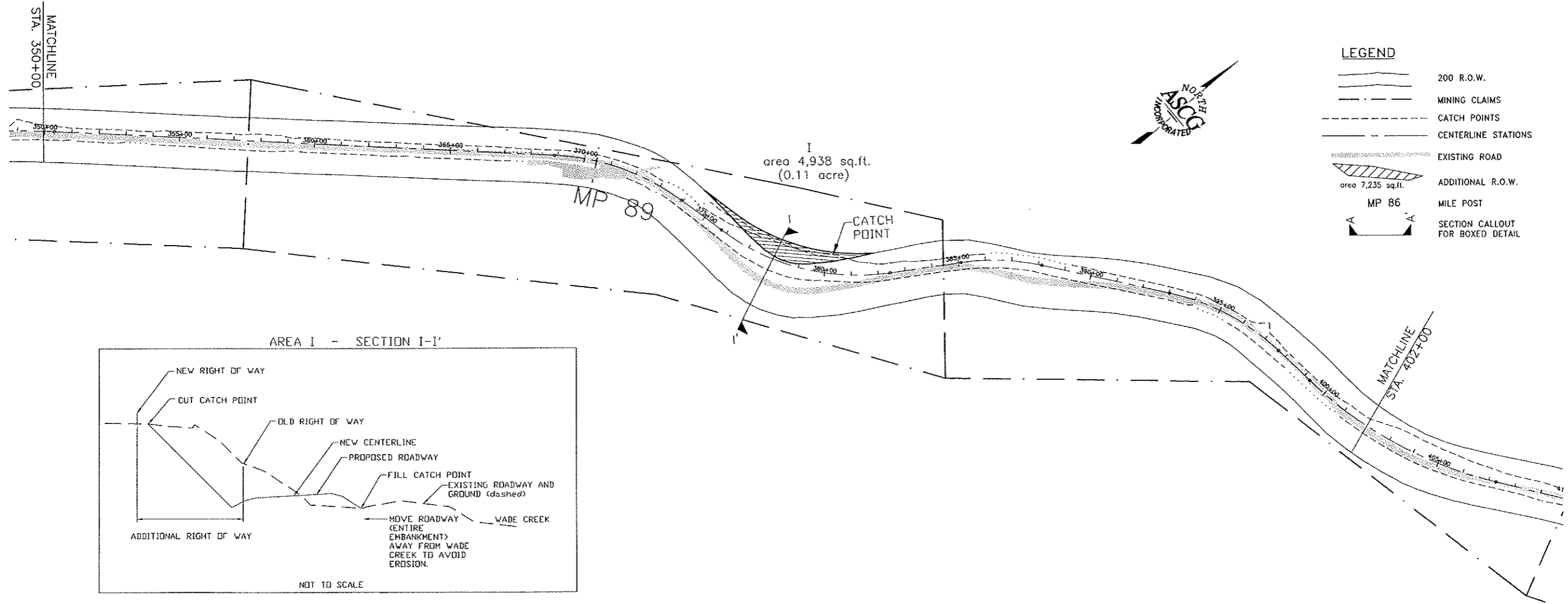
Tay ES-KC ROW 003.d  
 EA ES-KC ROW 003.d



TAYLOR HIGHWAY MP 64.5  
TO  
CANADA BORDER

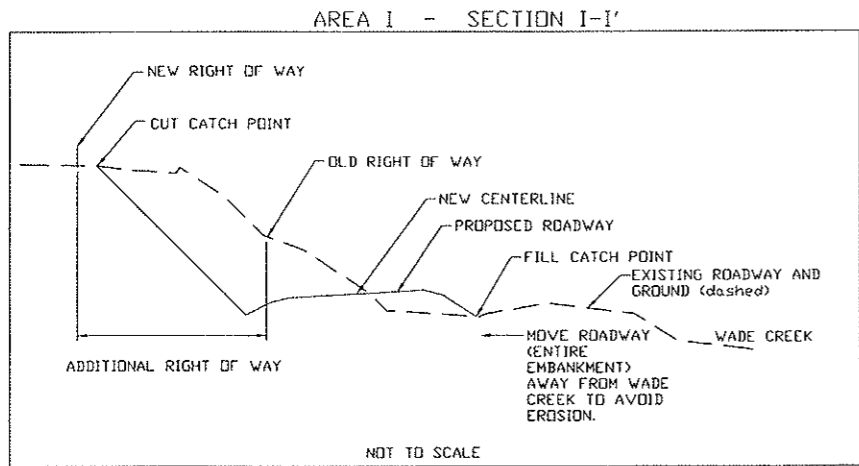


SOURCE: BLM 5-15-94



LEGEND

- 200 R.O.W.
- MINING CLAIMS
- CATCH POINTS
- CENTERLINE STATIONS
- EXISTING ROAD
- ADDITIONAL R.O.W.
- MP 86
- SECTION CALLOUT FOR BOXED DETAIL



SECTION 4(f) PROPERTIES  
FIGURE 9

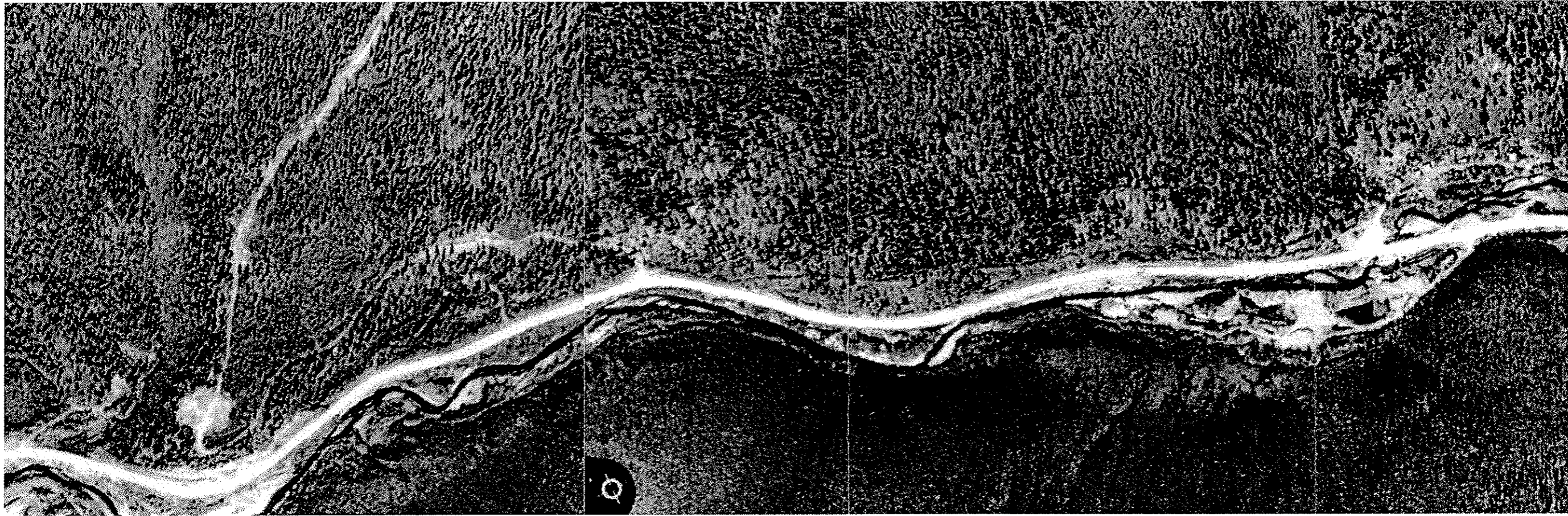
JOB NO:	4444
DATE:	JULY-2003
DRAWN BY:	KML
CHECKED BY:	BM

SOURCE: ADOT, JUNE 2003

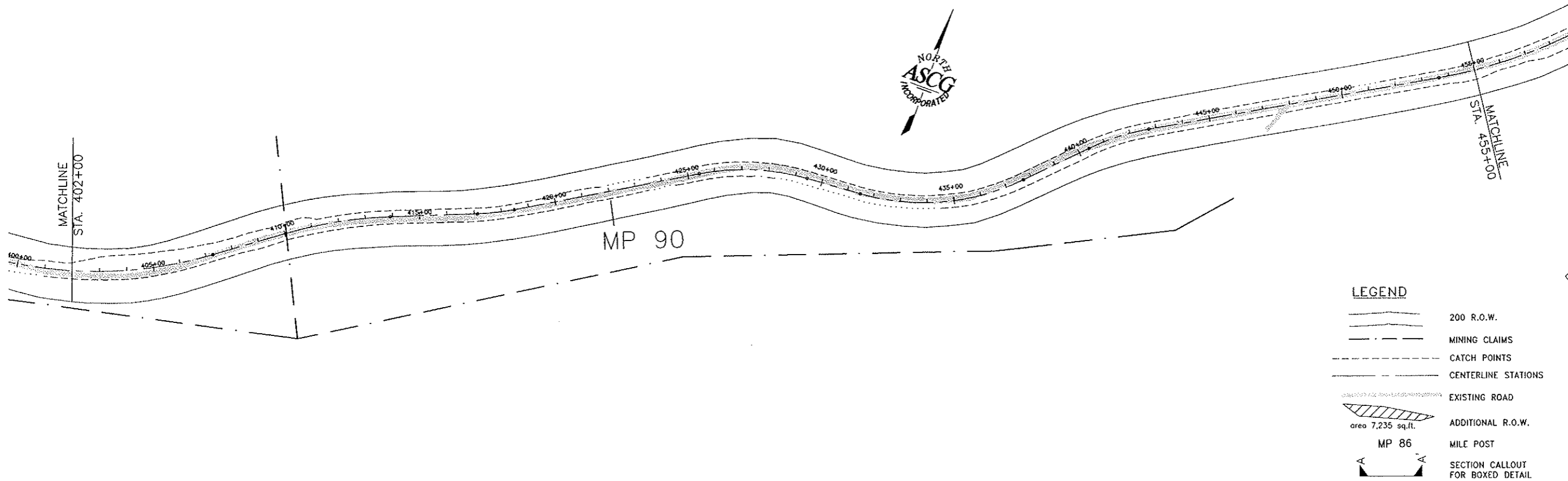
1 1110 Tayl EAA OWI 3S-KJ ROW 003.d



TAYLOR HIGHWAY MP 64.5  
TO  
CANADA BORDER



SOURCE: BLM 5-15-94



SOURCE: ADOT, JUNE 2003

SECTION 4(f) PROPERTIES  
FIGURE 10

JOB NO:	4444
DATE:	JULY-2003
DRAWN BY:	KML
CHECKED BY:	BM

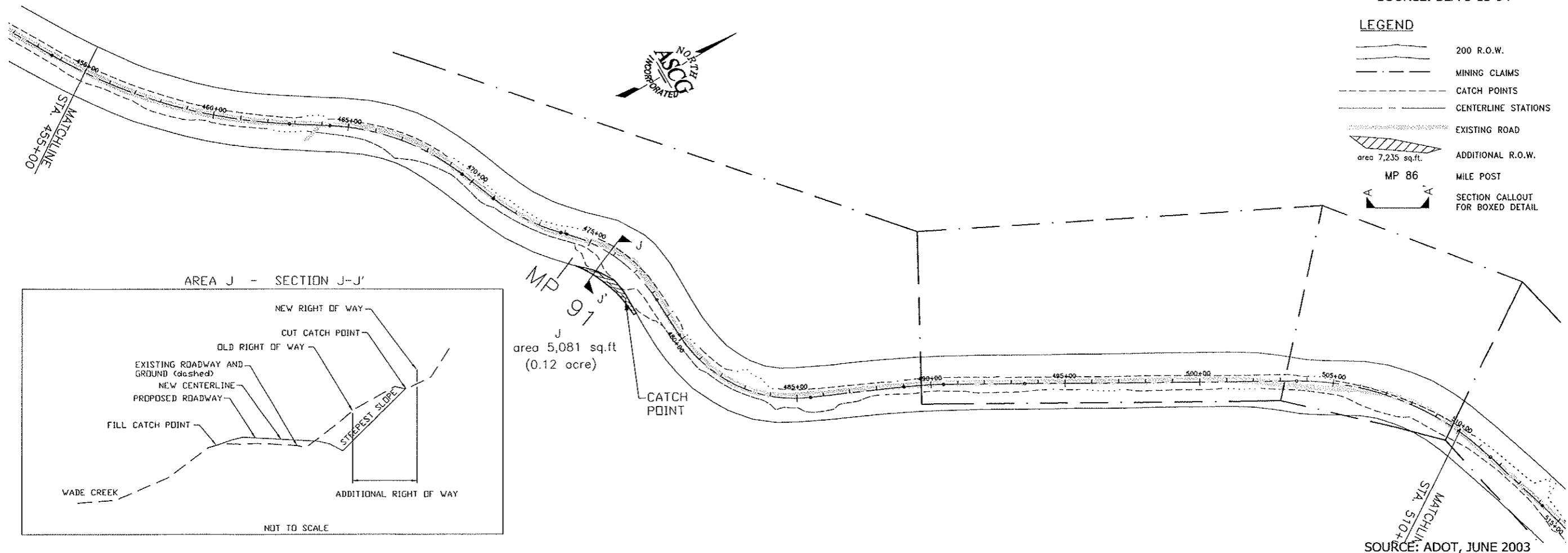
M111C . . . . .Tayl /BA/ . . . . .OWJ . . . . .ES-K . . . . .DROW . . . . .003.c



TAYLOR HIGHWAY MP 64.5  
TO  
CANADA BORDER



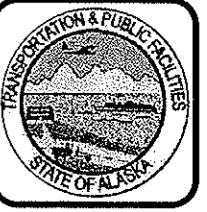
SOURCE: BLM 5-15-94



SECTION 4(f) PROPERTIES  
FIGURE 11

JOB NO:	4444
DATE:	JULY-2003
DRAWN BY:	KML
CHECKED BY:	BM

PUBLIC - TAYLOR HIGHWAY - ES-K - DROV - 2003



TAYLOR HIGHWAY MP 64.5  
TO  
CANADA BORDER

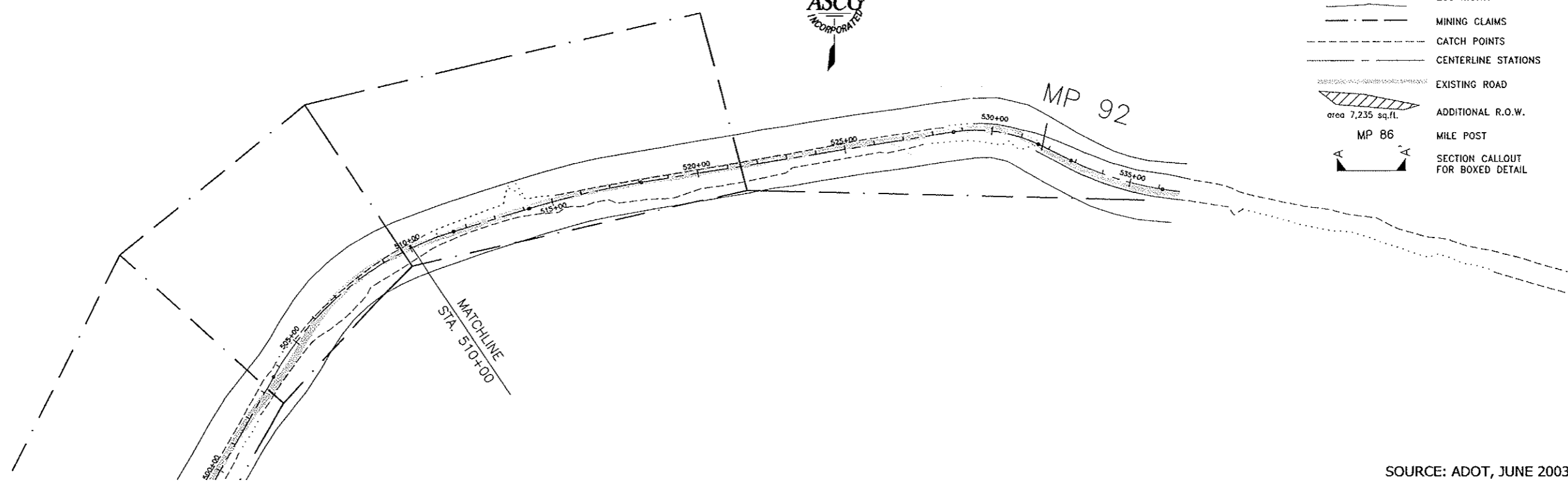


SOURCE: BLM 5-15-94



LEGEND

- 200 R.O.W.
- MINING CLAIMS
- CATCH POINTS
- CENTERLINE STATIONS
- EXISTING ROAD
- ADDITIONAL R.O.W. area 7,235 sq.ft.
- MILE POST
- SECTION CALLOUT FOR BOXED DETAIL



SOURCE: ADOT, JUNE 2003

SECTION 4(f) PROPERTIES  
FIGURE 12

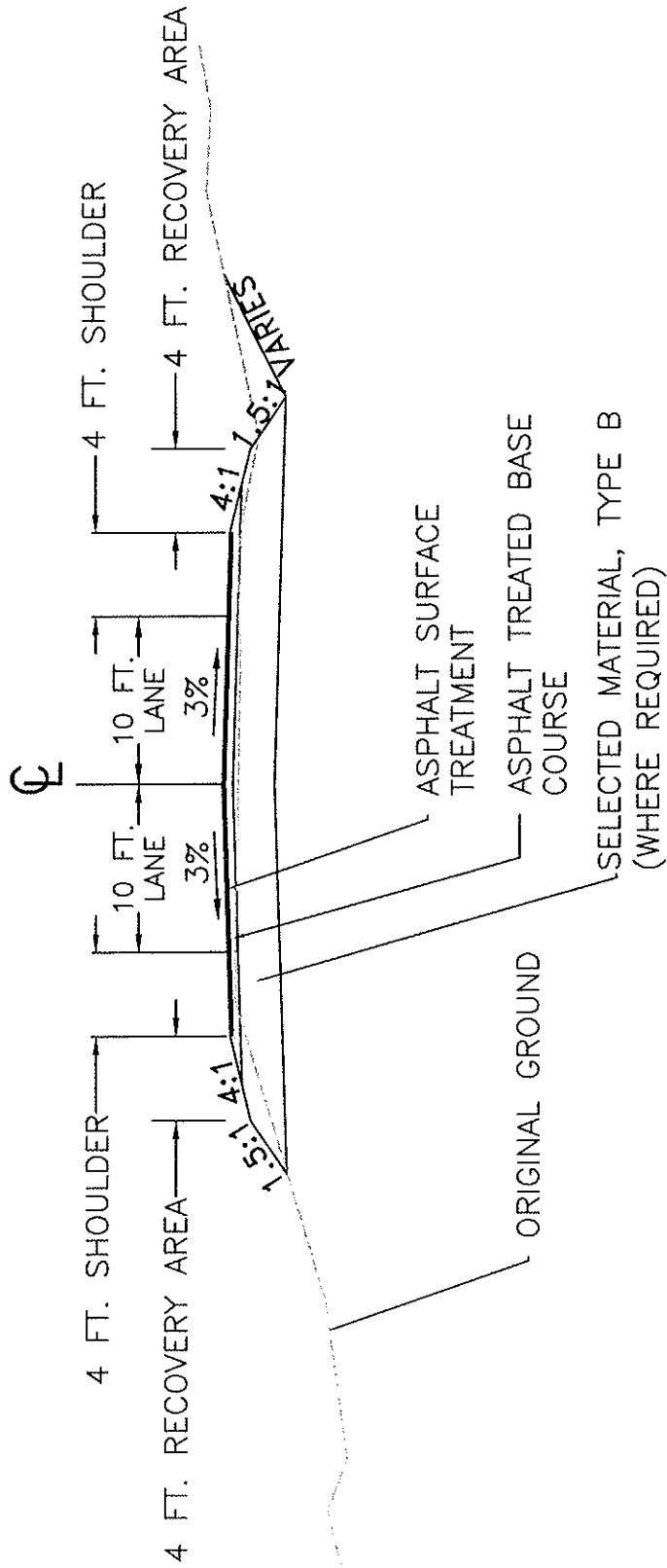
JOB NO: 4444

DATE: JULY-2003

DRAWN BY: KML

CHECKED BY: BM

\M11C ..... .Tayl ..... /EA\ ..... /LOW J ..... ES-KI ..... /ROW ..... 003.d

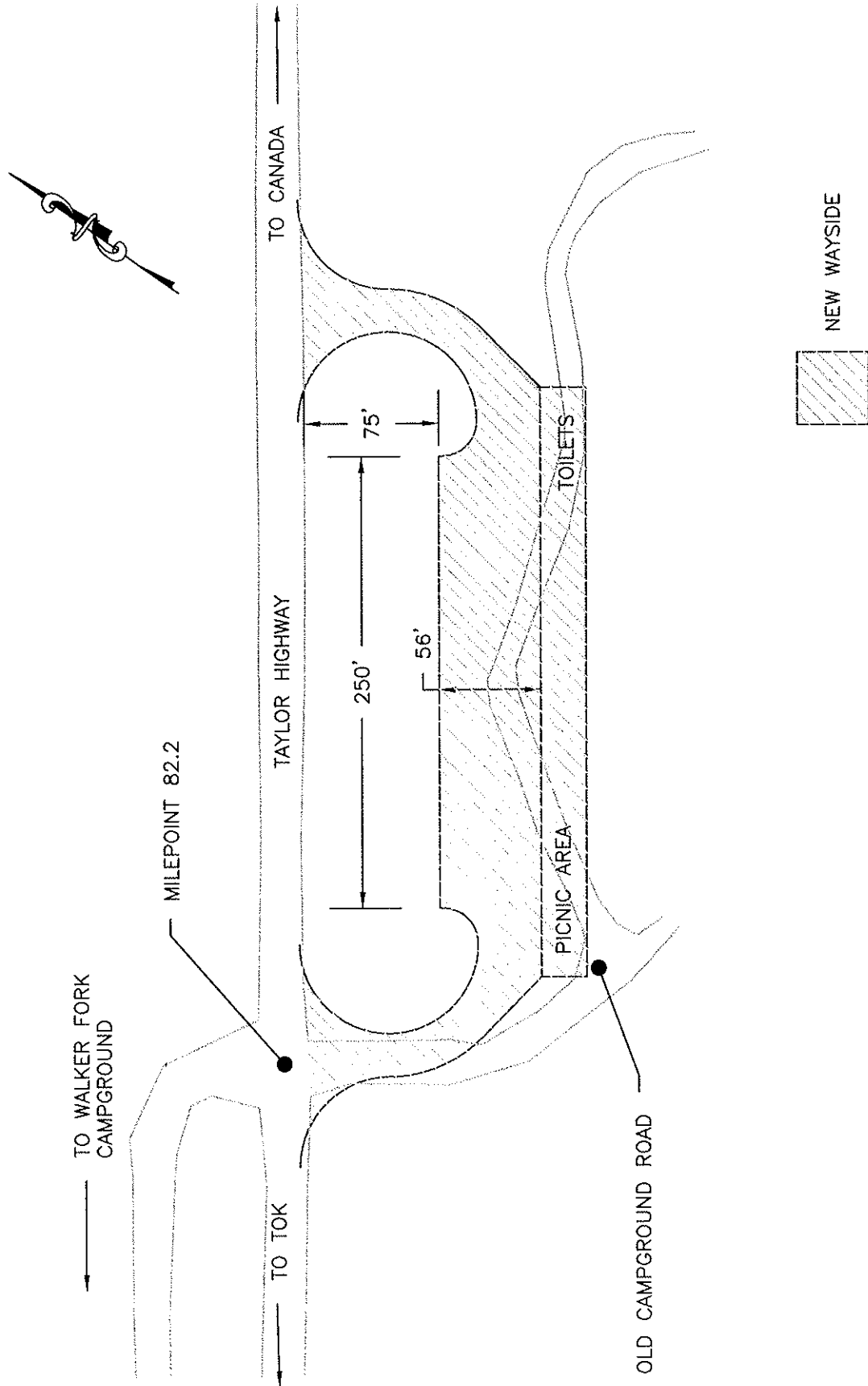


JOB NO:	444
DATE:	11/12/02
DRAWN BY:	DRM
CHECKED BY:	ROS

TYPICAL ROAD SECTION  
FIGURE 13

TAYLOR HIGHWAY MP 64.5  
TO THE  
CANADIAN BORDER





TAYLOR HIGHWAY MP 64.5  
TO THE  
CANADIAN BORDER

WALKER FORK WAYSIDE  
PRELIMINARY PLAN VIEW  
FIGURE 14

JOB NO.:	4444
DATE:	1/12/02
DRAWN BY:	DRM
CHECKED BY:	NCS



TAYLOR HIGHWAY MP 64.5  
TO THE  
CANADIAN BORDER

PROJECT DETAIL MAP 1  
FIGURE 15

JOB NO: 4444  
DATE: 11/12/02  
DRAWN BY: DRM  
CHECKED BY: KKS



**LEGEND**

- MINING CLAIMS
- MATERIAL SITE

GRAPHIC SCALE  
1/4 mile 0 1/4 mile 1/2 mile 1 mile

K:\00811104444 - Taylor Hwy EA\Acad\Final Submittal\Figure 15 and 16.dwg





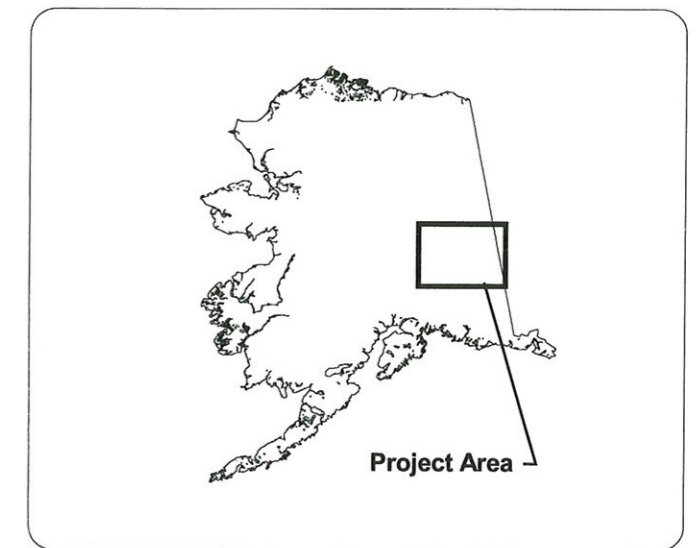
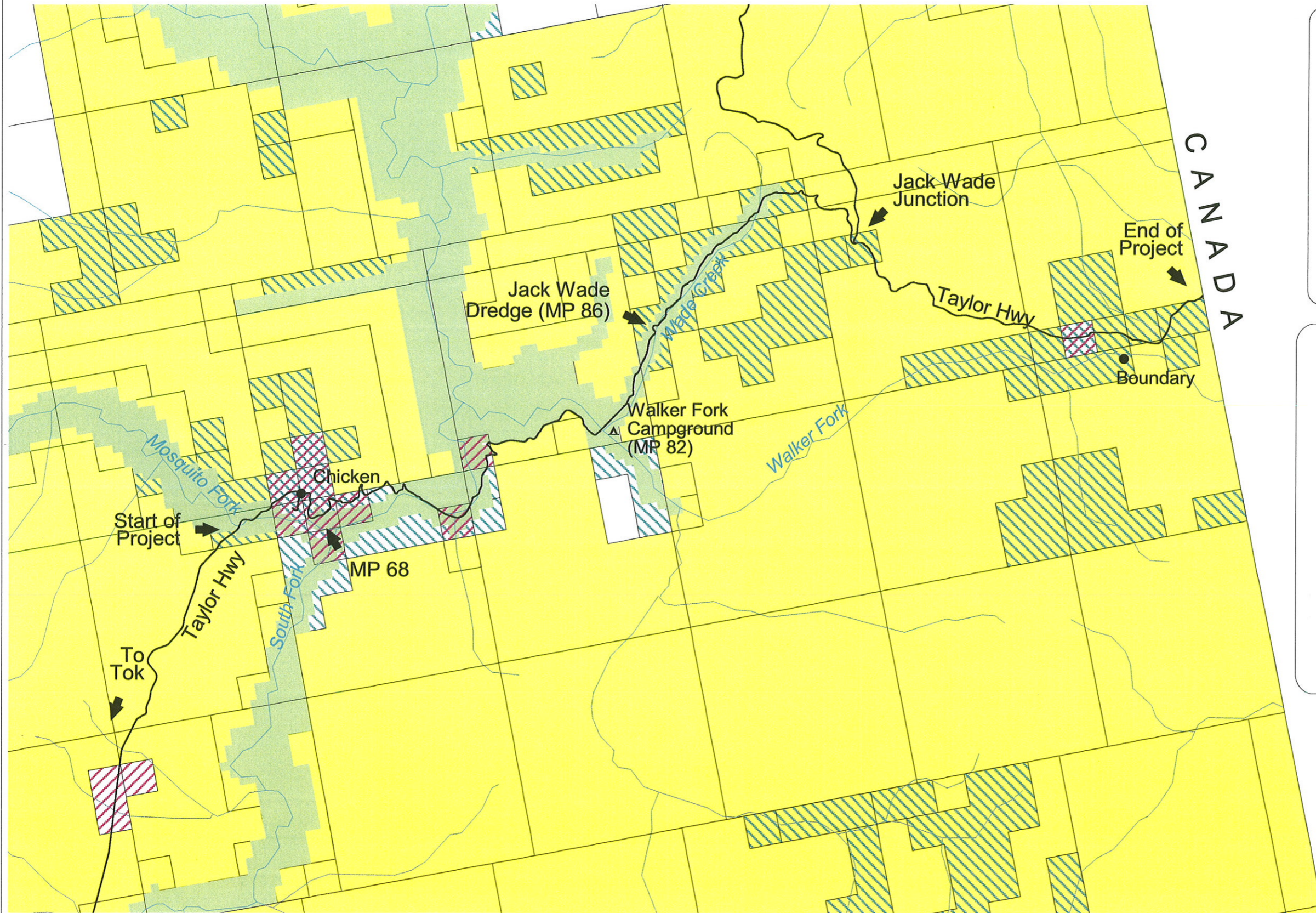
TAYLOR HIGHWAY MP 64.5  
TO THE  
CANADIAN BORDER

PROJECT DETAIL MAP 2  
FIGURE 16

JOB NO: 4444  
DATE: 11/12/02  
DRAWN BY: DRM  
CHECKED BY: KKS

# Figure 17 - Land Status Map

## Taylor Highway MP 64.5 to the Canadian Border



### LEGEND

- Towns
- ▲ Campground
- Roads
- River
- ▨ Private Land
- State Land
- ▨ State Selected
- BLM
- Fortymile National Wild and Scenic River (Managed by BLM)

*Source: Alaska Department of Natural Resources*

