

M:\Data\007\Unrevised_Access\Figures\Fig3-1 January, 2008\Fig3-1.dwg: landuse or ownership

Figure 3-1
Land Ownership at Northern End of Lynn Canal

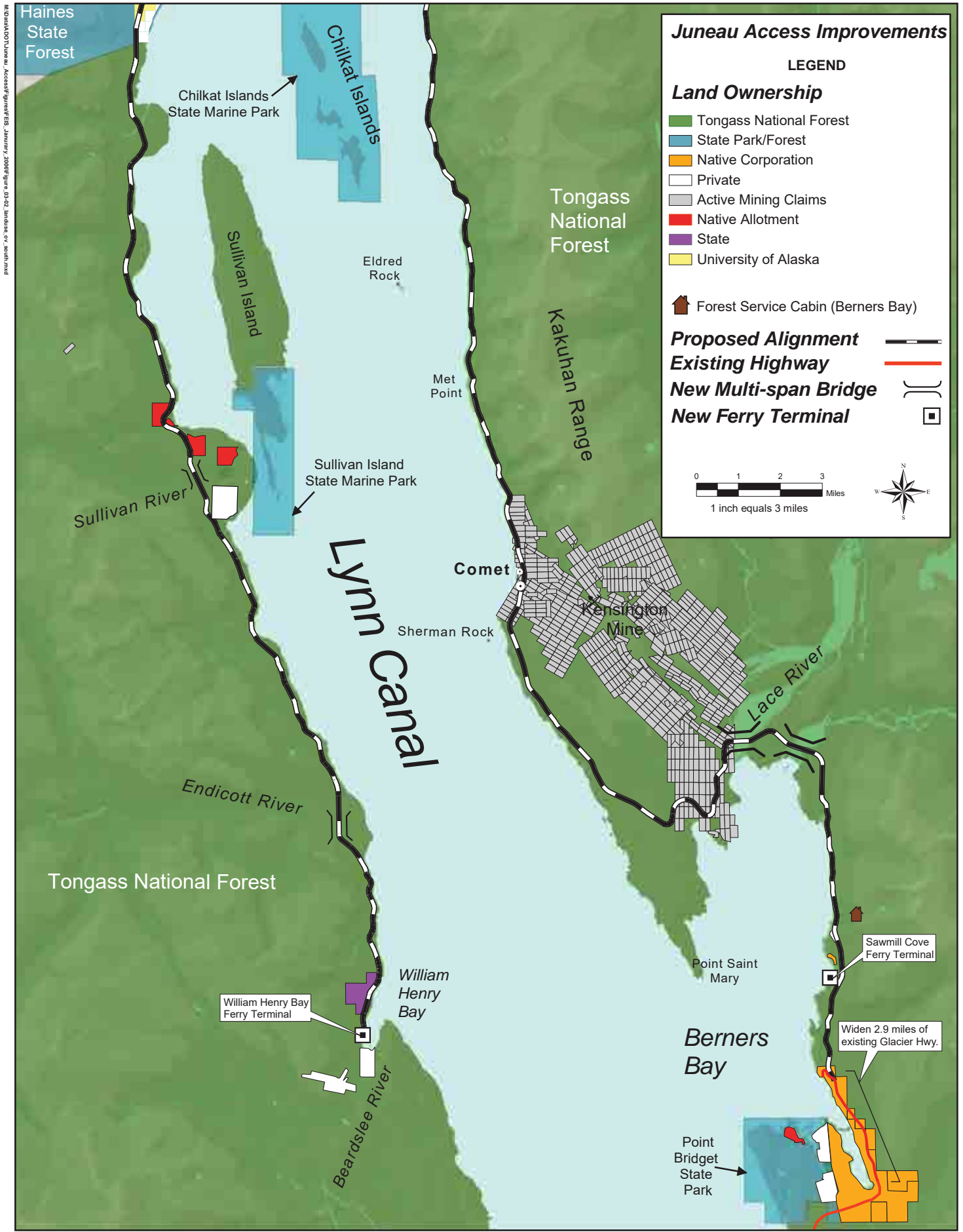


Figure 3-2
Land Ownership at Southern End of Lynn Canal

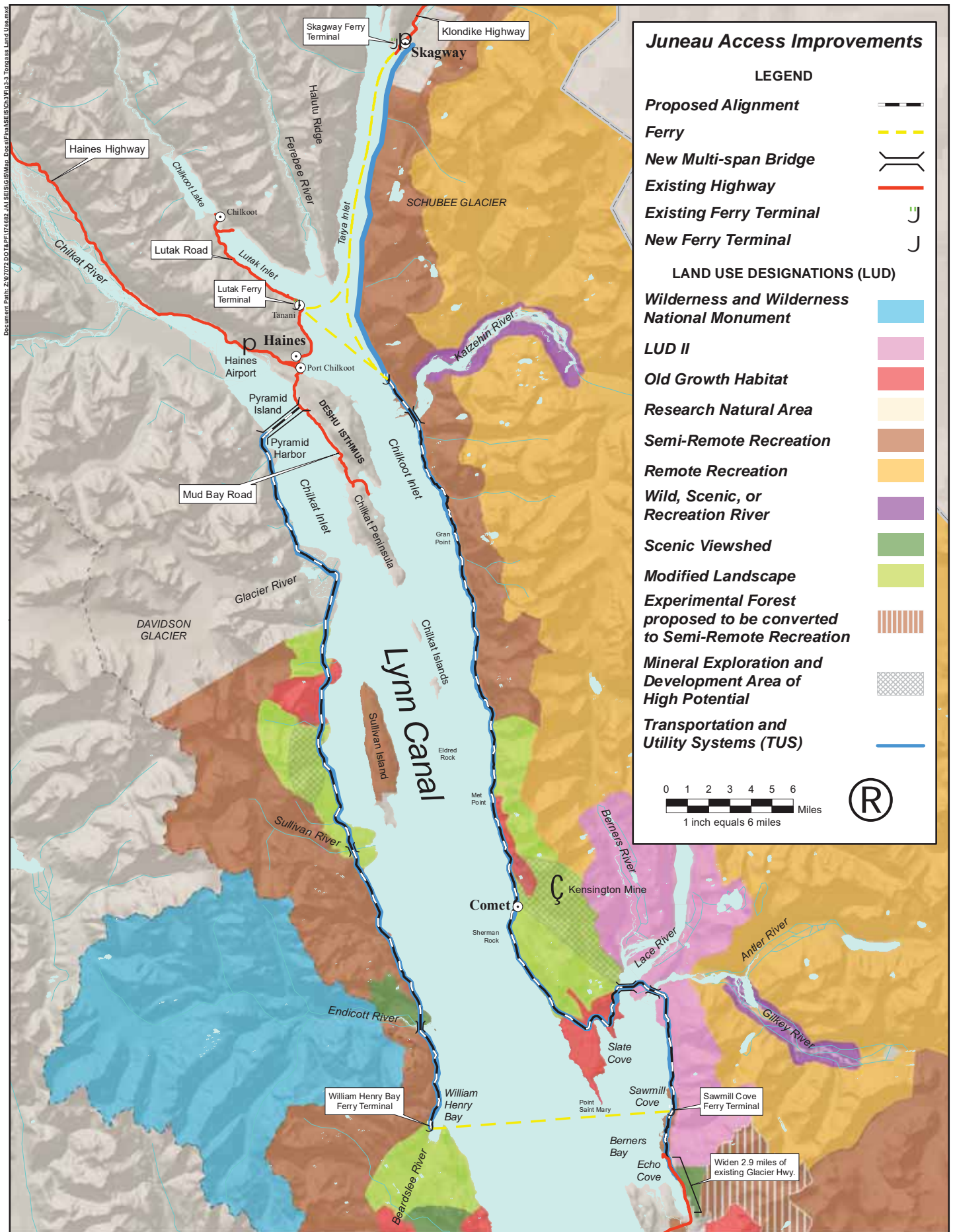


Figure 3-3
Tongass Land and Resources Management Plan (2008) Land Use Designations

Document Path: Z:\0707 DOT\PR\174882\JAI\SEIS\GIS\Map_Docs\Final\SEIS\CH\Fig_4\Inventory\Roadless Areas

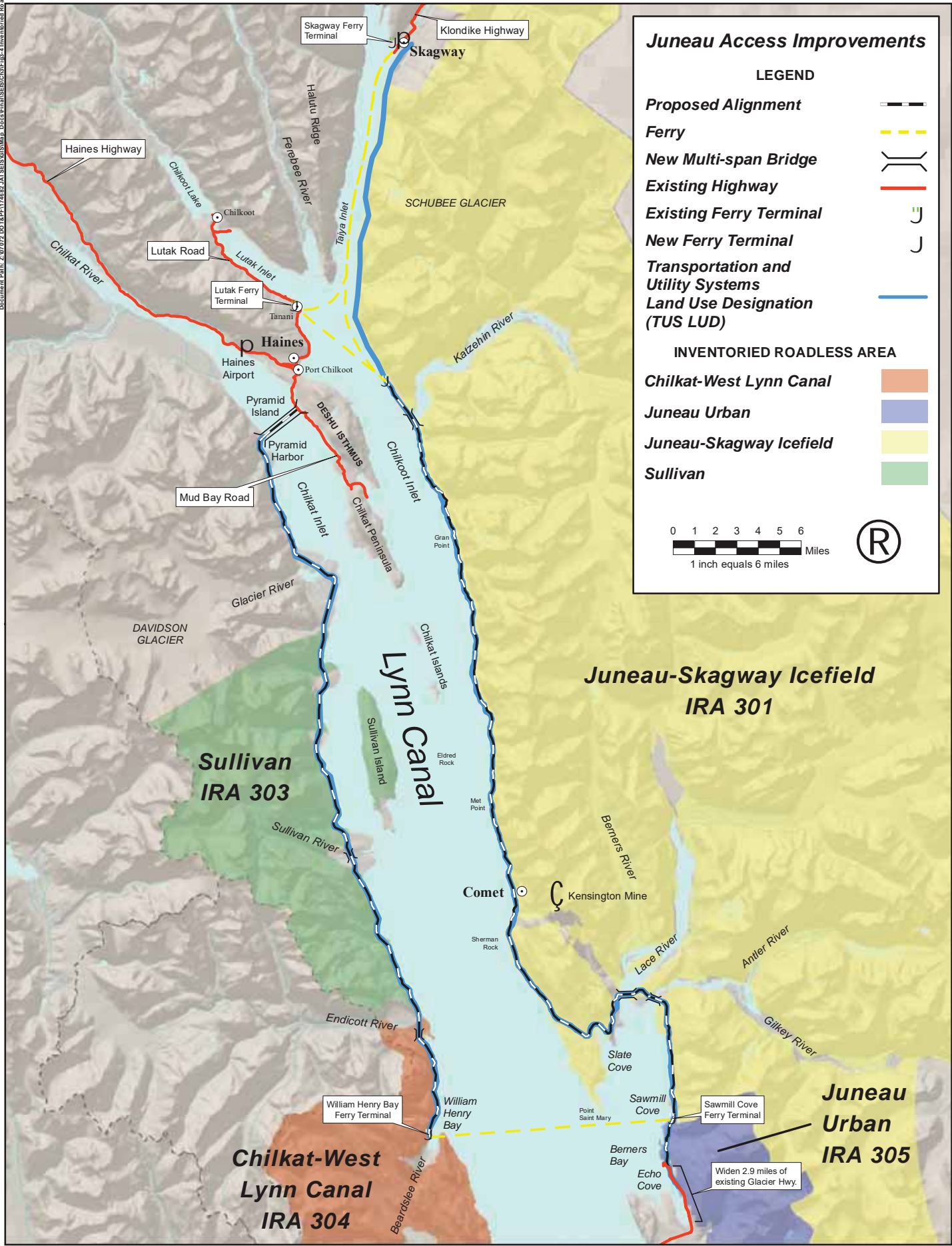


Figure 3-4
Inventoried Roadless Areas

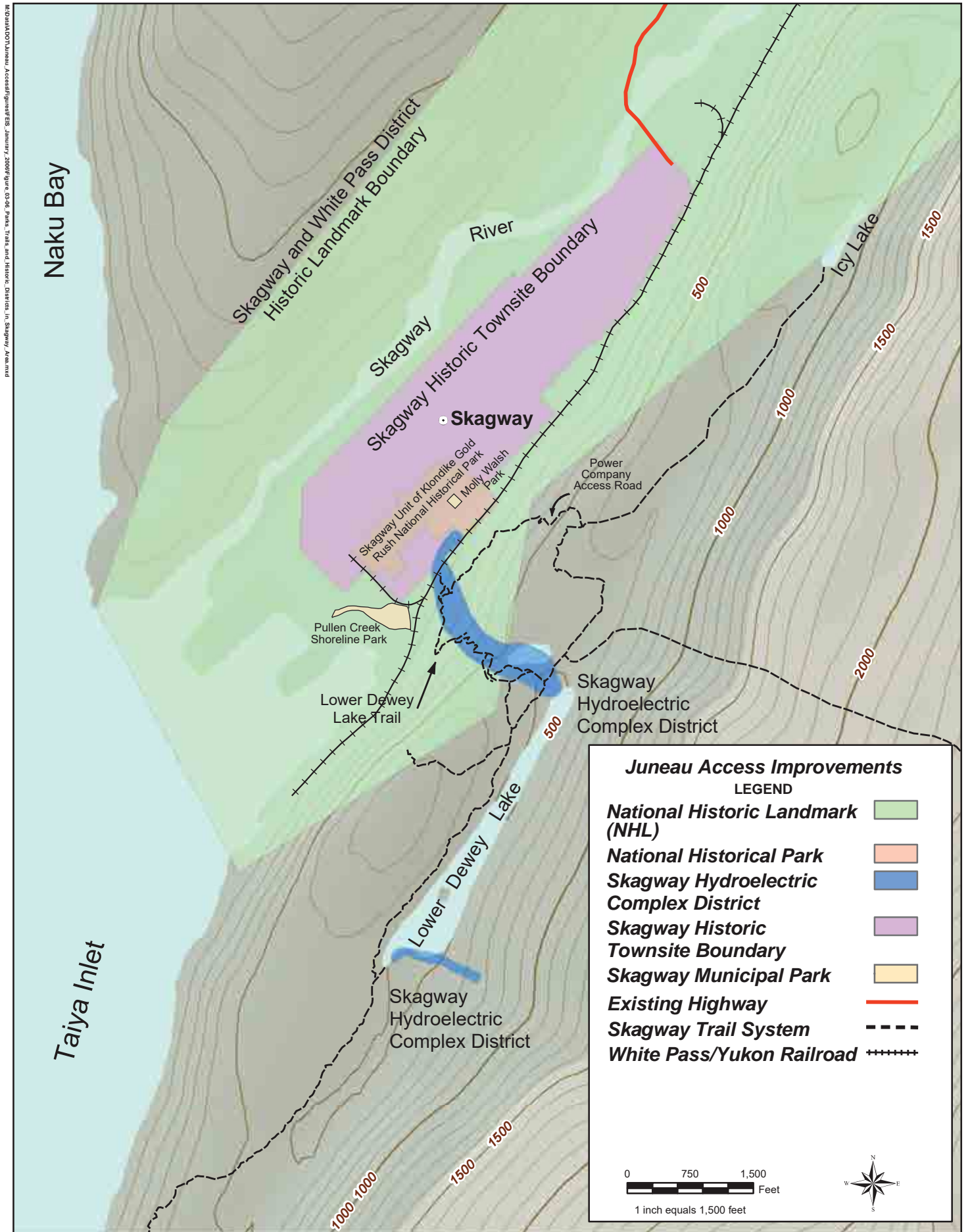


Figure 3-5
Parks, Trails and Historic Districts in the Skagway Area

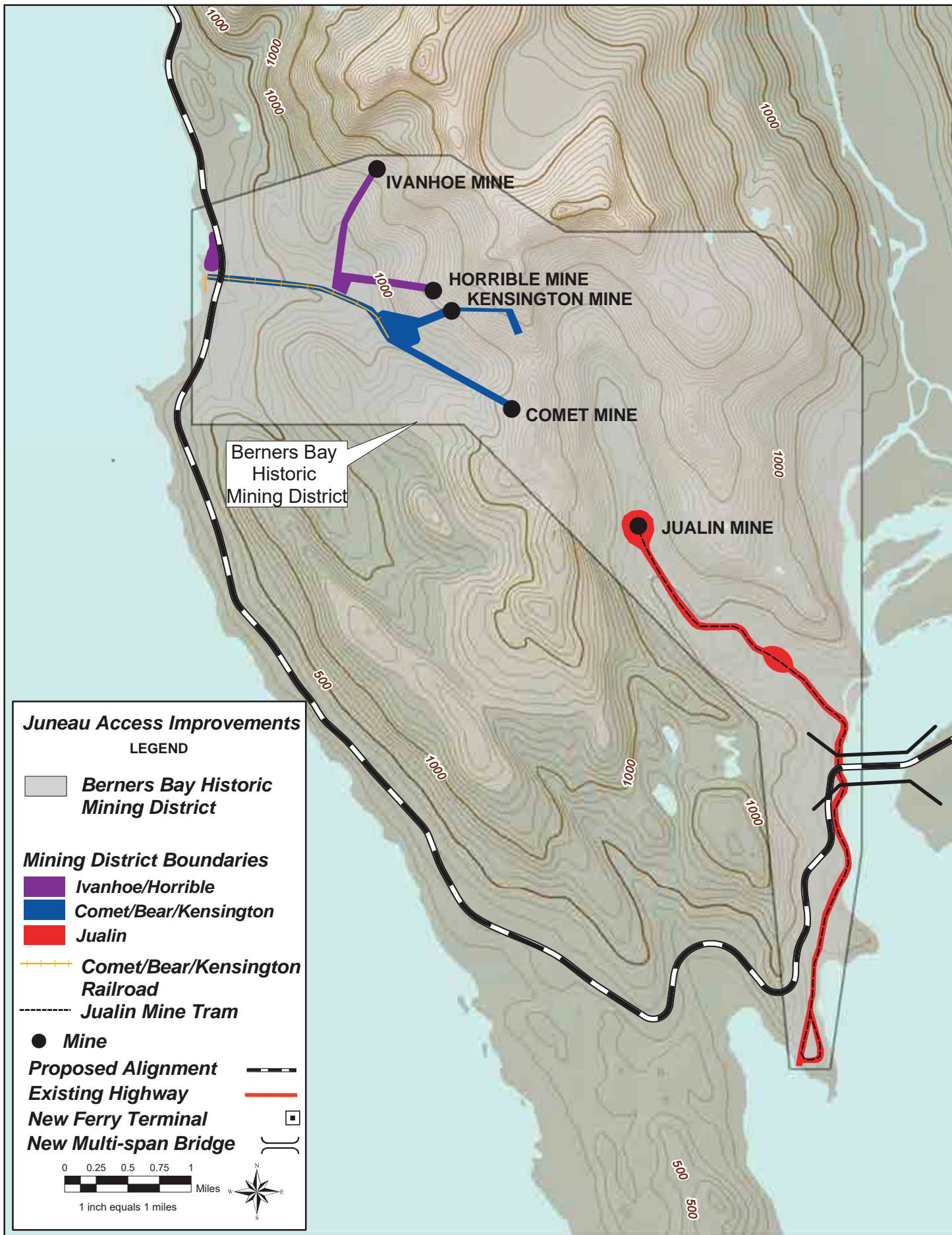


Figure 3-6
Historic Mining Districts in East Lynn Canal Area

Juneau Access Improvements

LEGEND

Subsistence (Skagway)

- Invertebrates
- Salmon
- Finfish
- Marine Mammals

Proposed Alignment

Existing Highway

New Multi-span Bridge

New Ferry Terminal

0 1 2 3 4 5 6 Miles

1 inch equals 6 miles

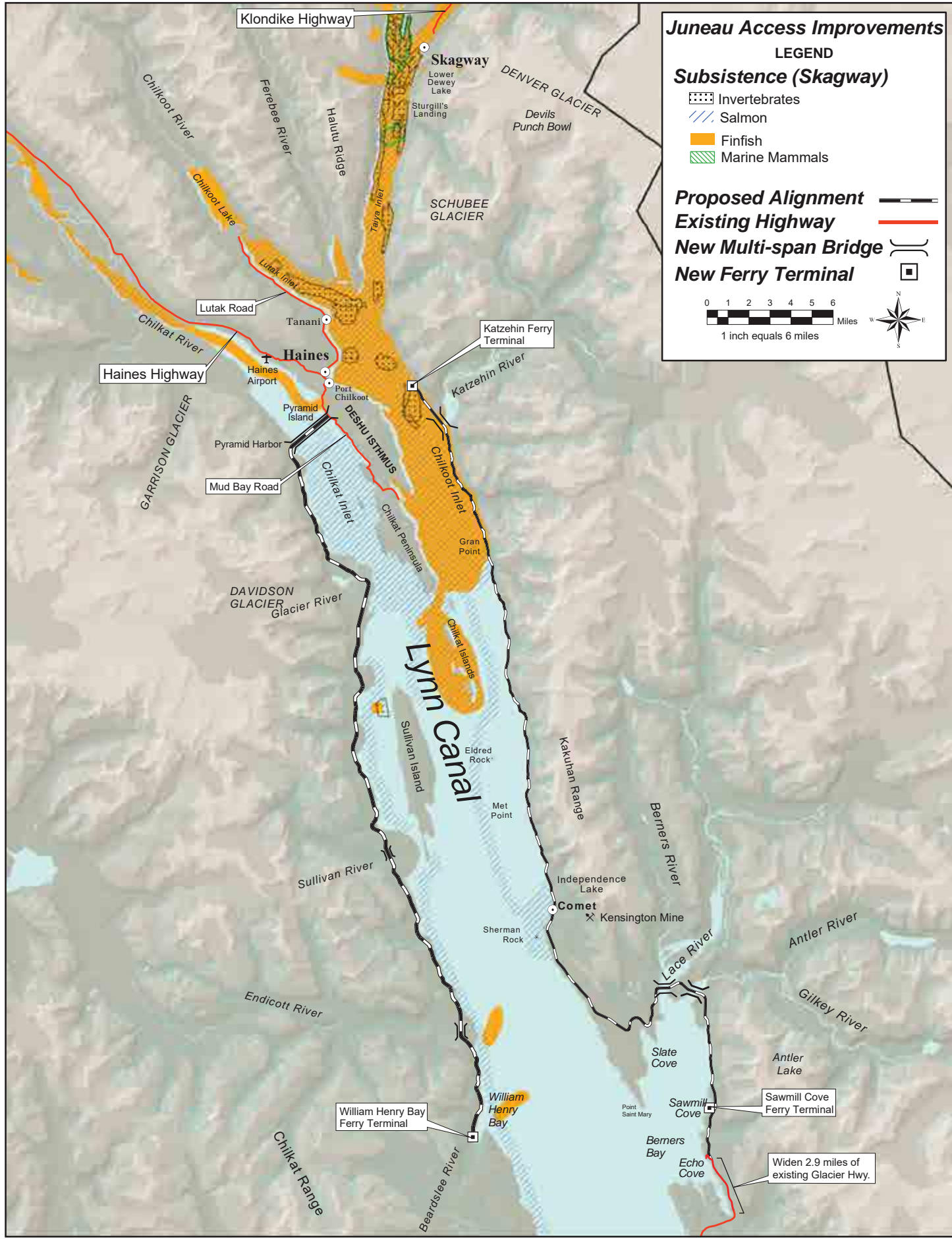


Figure 3-7
Skagway Subsistence

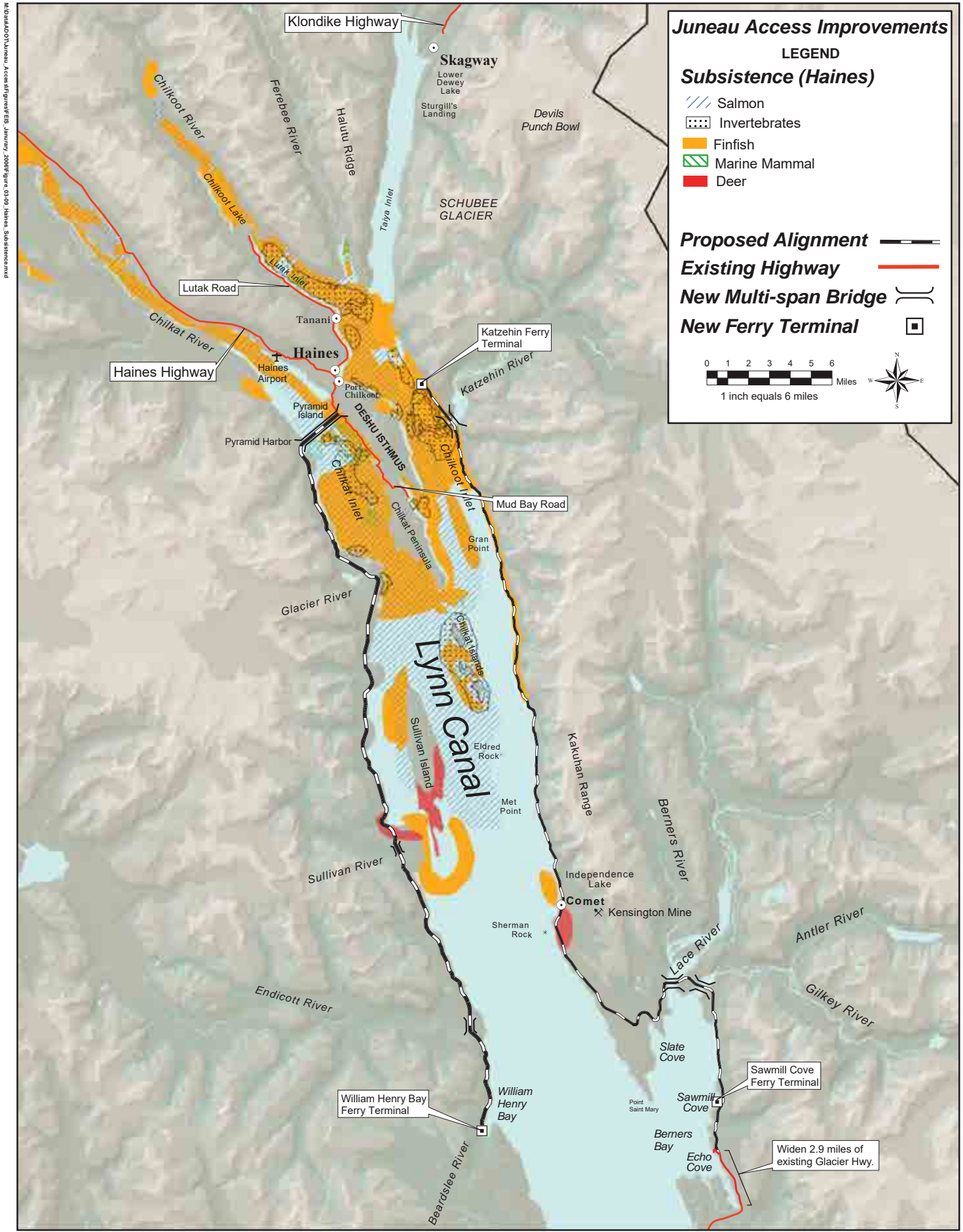


Figure 3-8
Haines Subsistence

Juneau Access Improvements

LEGEND

Subsistence (Klukwan)

- Finfish
- Salmon
- Halibut

Proposed Alignment

Existing Highway

New Multi-span Bridge

New Ferry Terminal

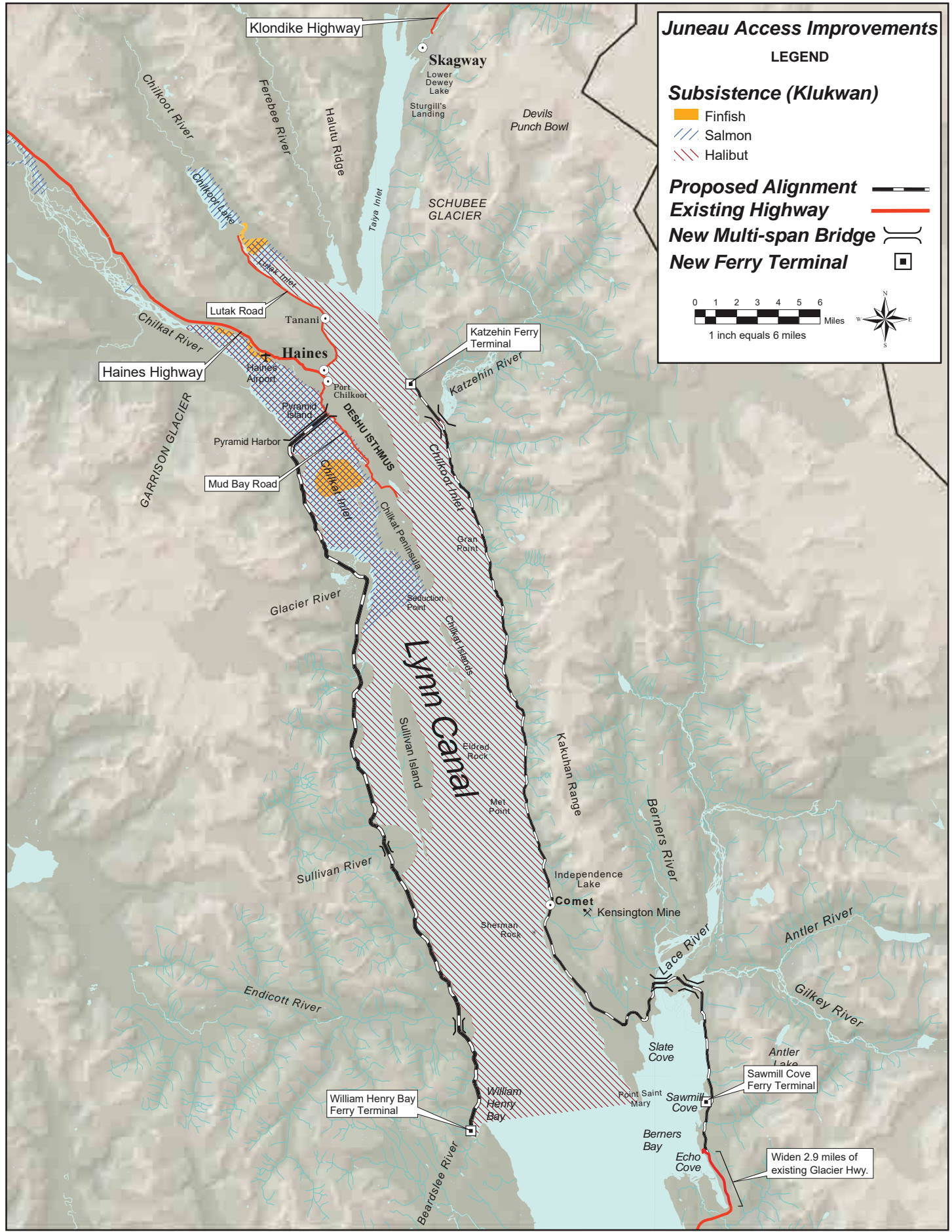
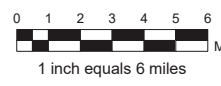


Figure 3-9
Klukwan Subsistence

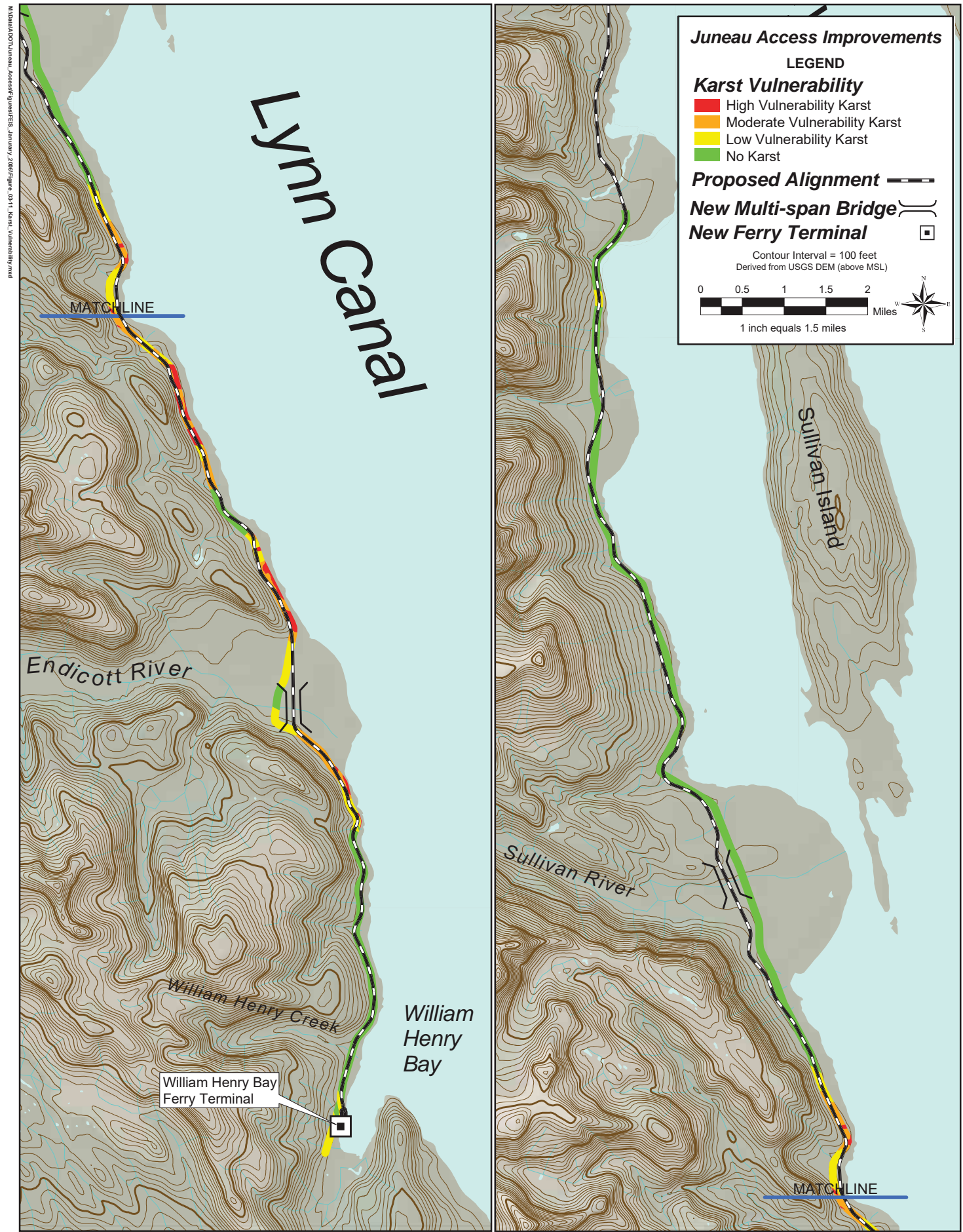


Figure 3-10
Karst Vulnerability for West Lynn Canal Area

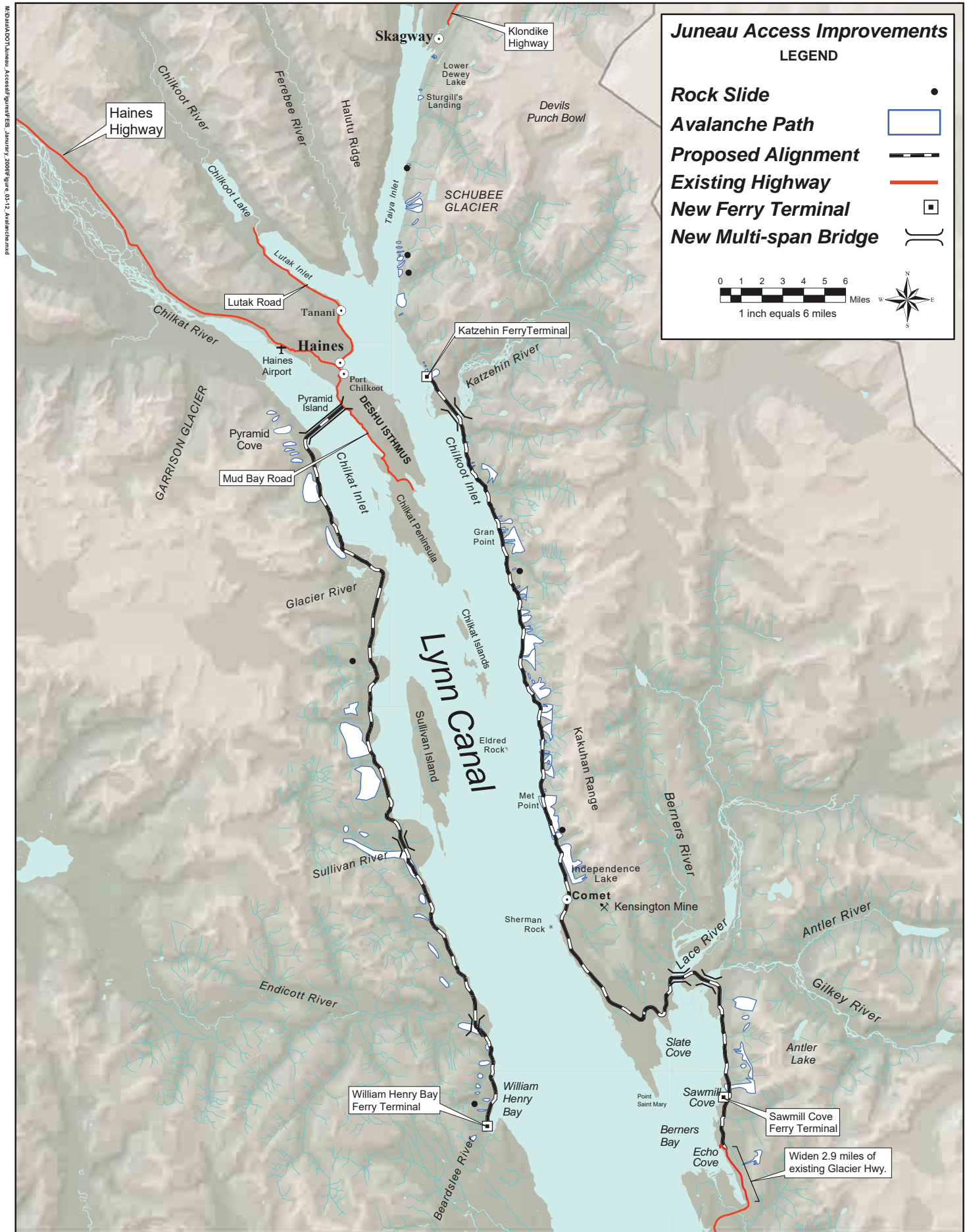


Figure 3-11
Avalanche Paths and Rock Slides

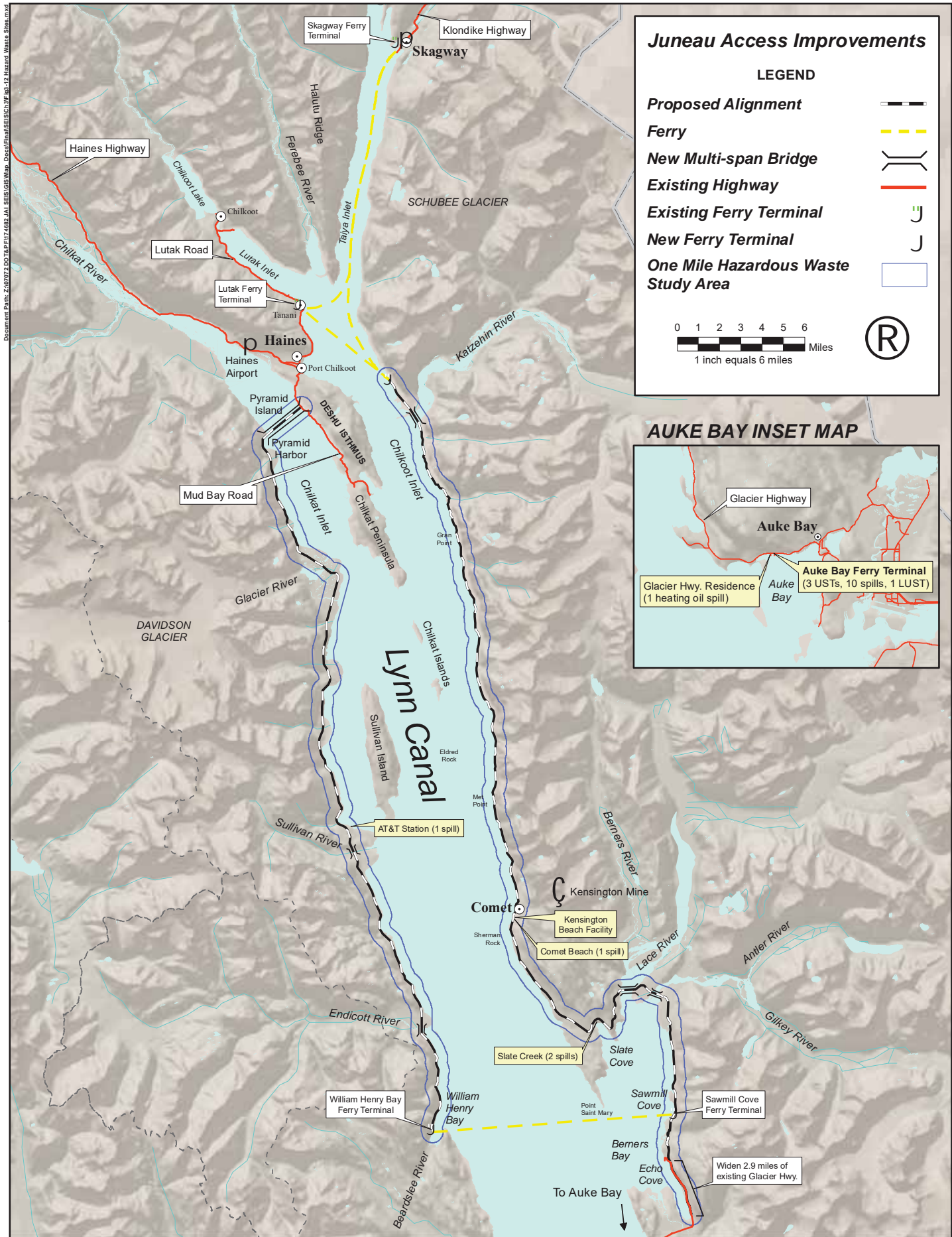
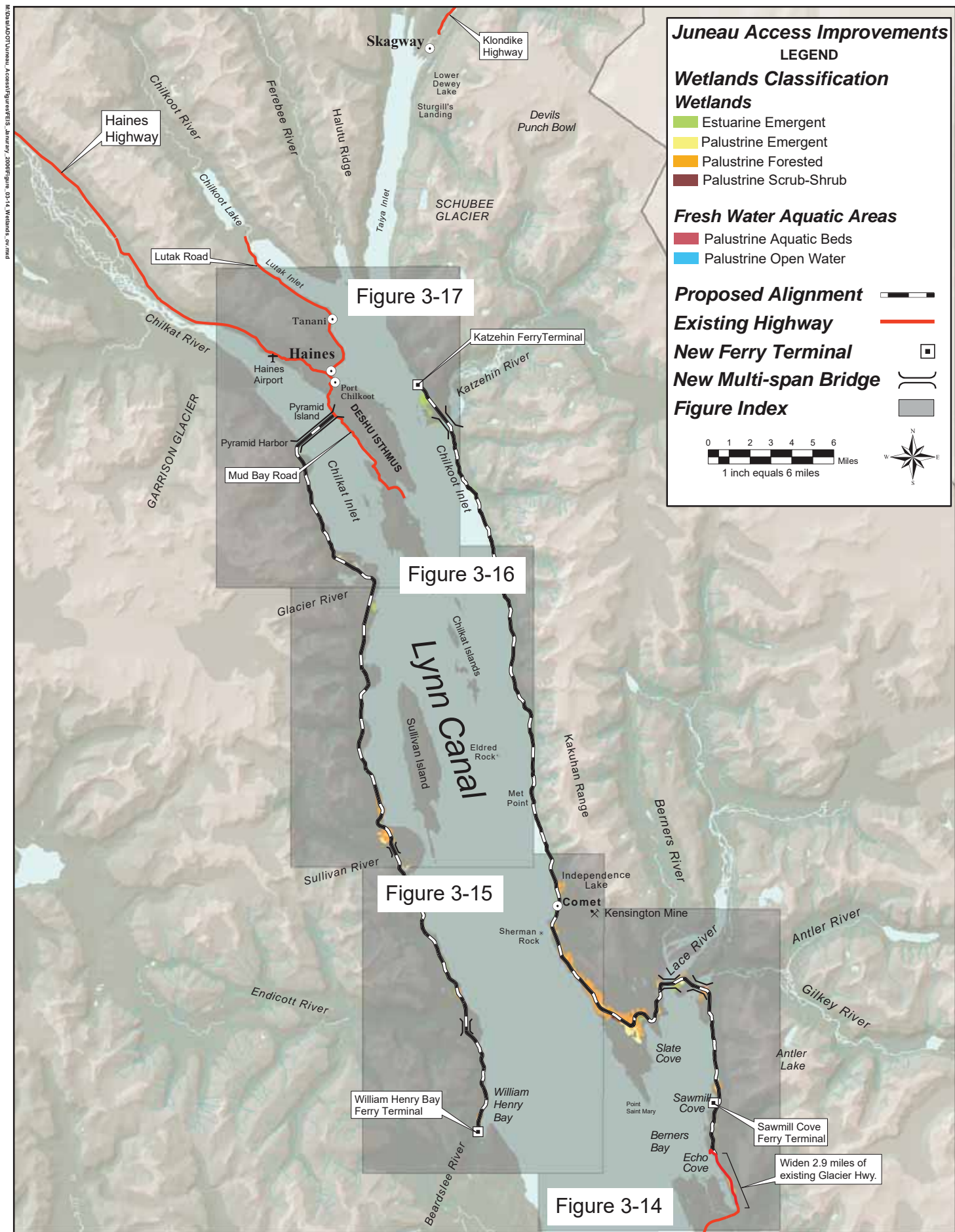


Figure 3-12
Potential Hazardous Waste Sites



Juneau Access Improvements
LEGEND

Wetlands Classification

Wetlands

- Estuarine Emergent
- Palustrine Emergent
- Palustrine Forested
- Palustrine Scrub-Shrub

Fresh Water Aquatic Areas

- Palustrine Aquatic Beds
- Palustrine Open Water

Proposed Alignment

Existing Highway

New Ferry Terminal

New Multi-span Bridge

Figure Index

0 1 2 3 4 5 6 Miles
 1 inch equals 6 miles

N
 S
 E
 W

Figure 3-13
Wetlands Classifications Figure Index

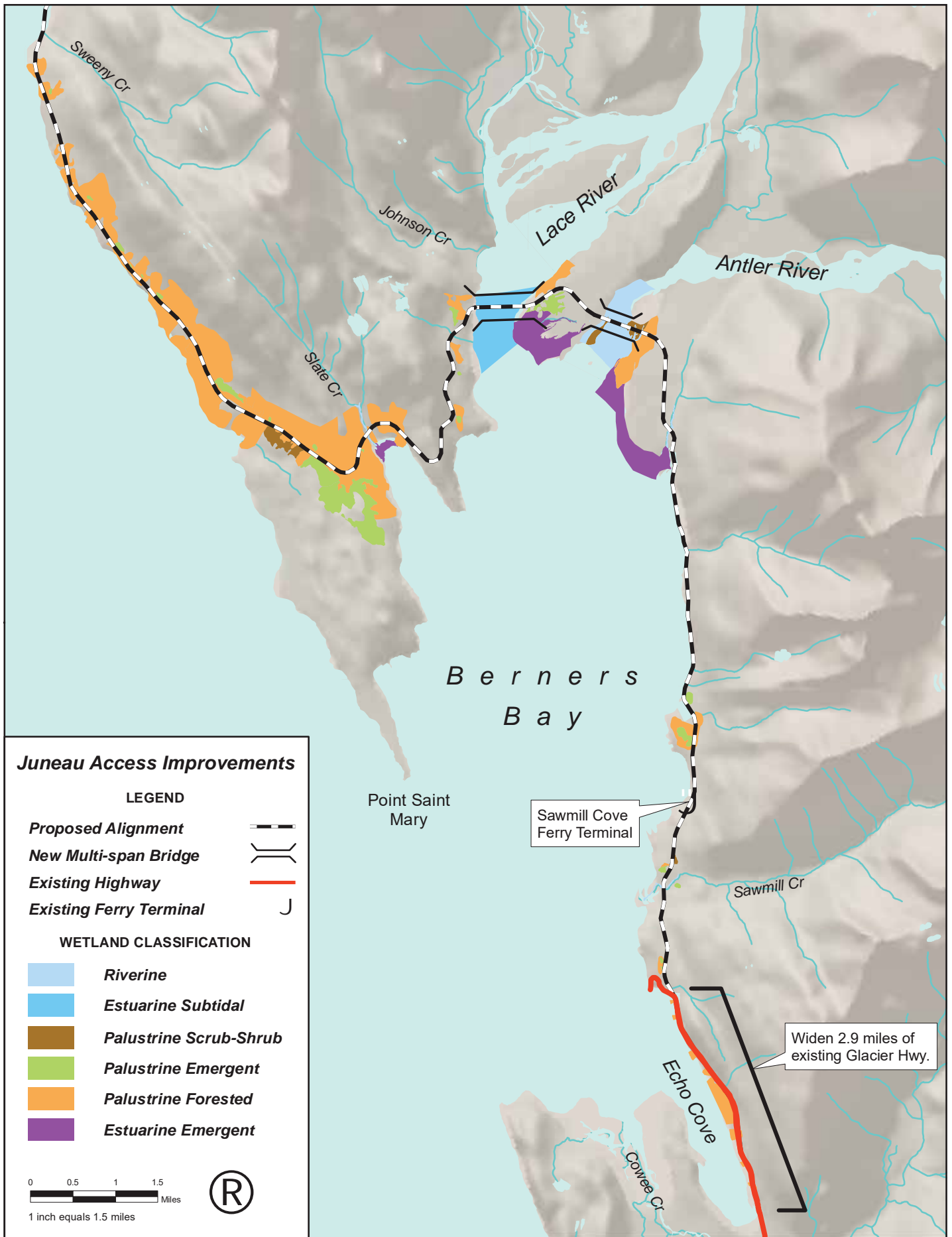
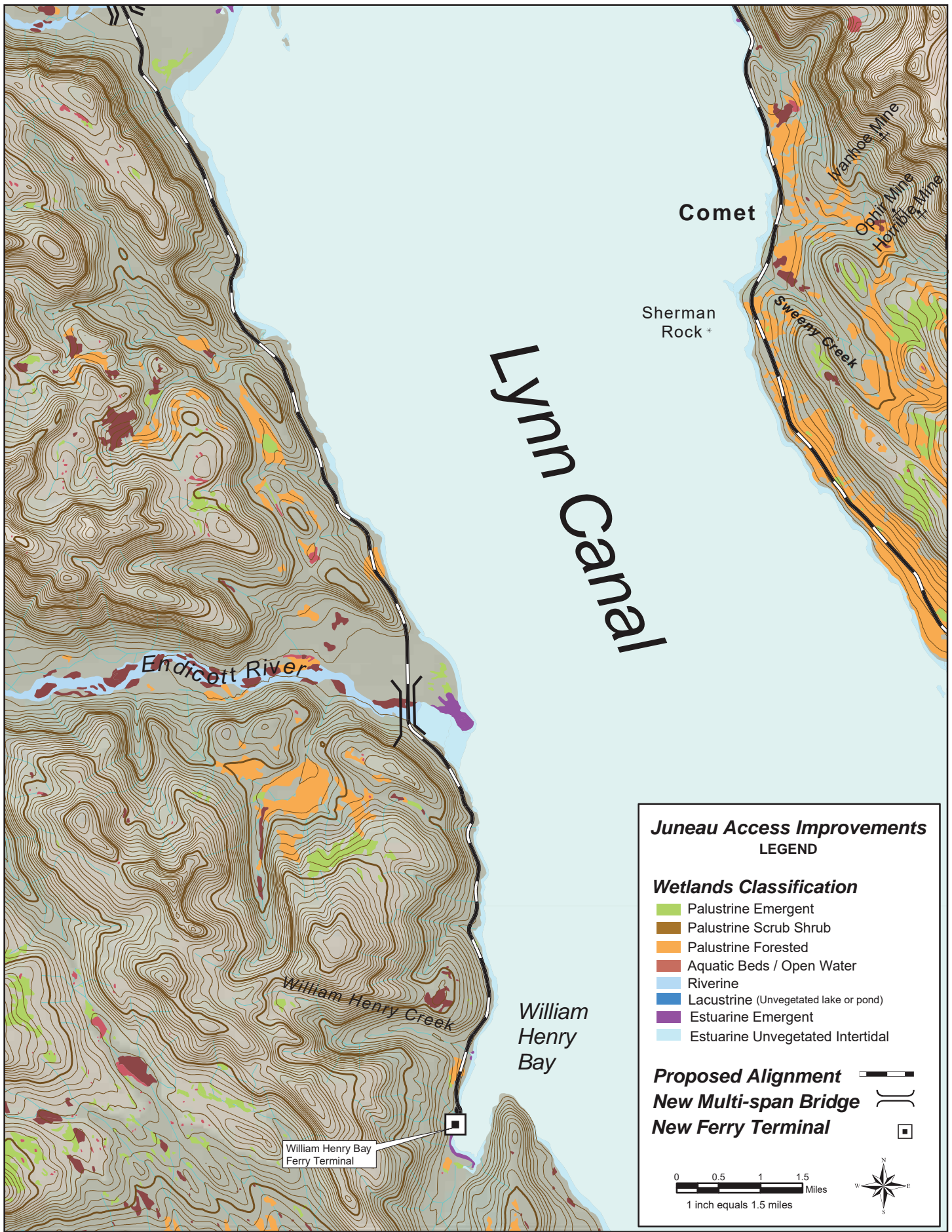


Figure 3-14
Wetlands Berners Bay

M:\Data\4007\Juneau_Access_Improvements\FIG3-15_Figure_3-15_Wetlands.mxd



Juneau Access Improvements
LEGEND

Wetlands Classification

- Palustrine Emergent
- Palustrine Scrub Shrub
- Palustrine Forested
- Aquatic Beds / Open Water
- Riverine
- Lacustrine (Unvegetated lake or pond)
- Estuarine Emergent
- Estuarine Unvegetated Intertidal

Proposed Alignment

New Multi-span Bridge

New Ferry Terminal

0 0.5 1 1.5 Miles
1 inch equals 1.5 miles

Figure 3-15
Wetlands Classifications for William Henry Bay Area and Comet Area

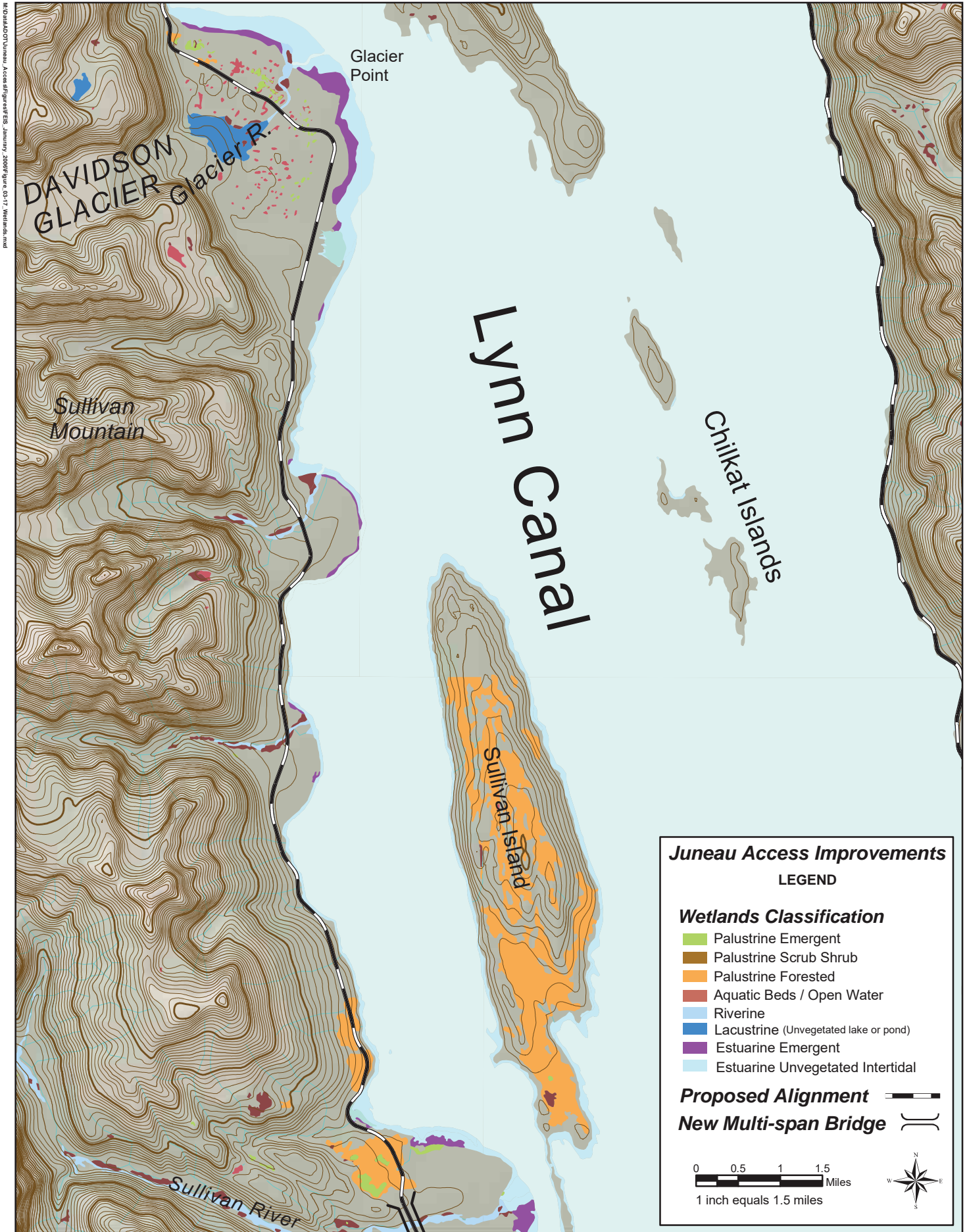


Figure 3-16
Wetlands Classifications for Sullivan River Area

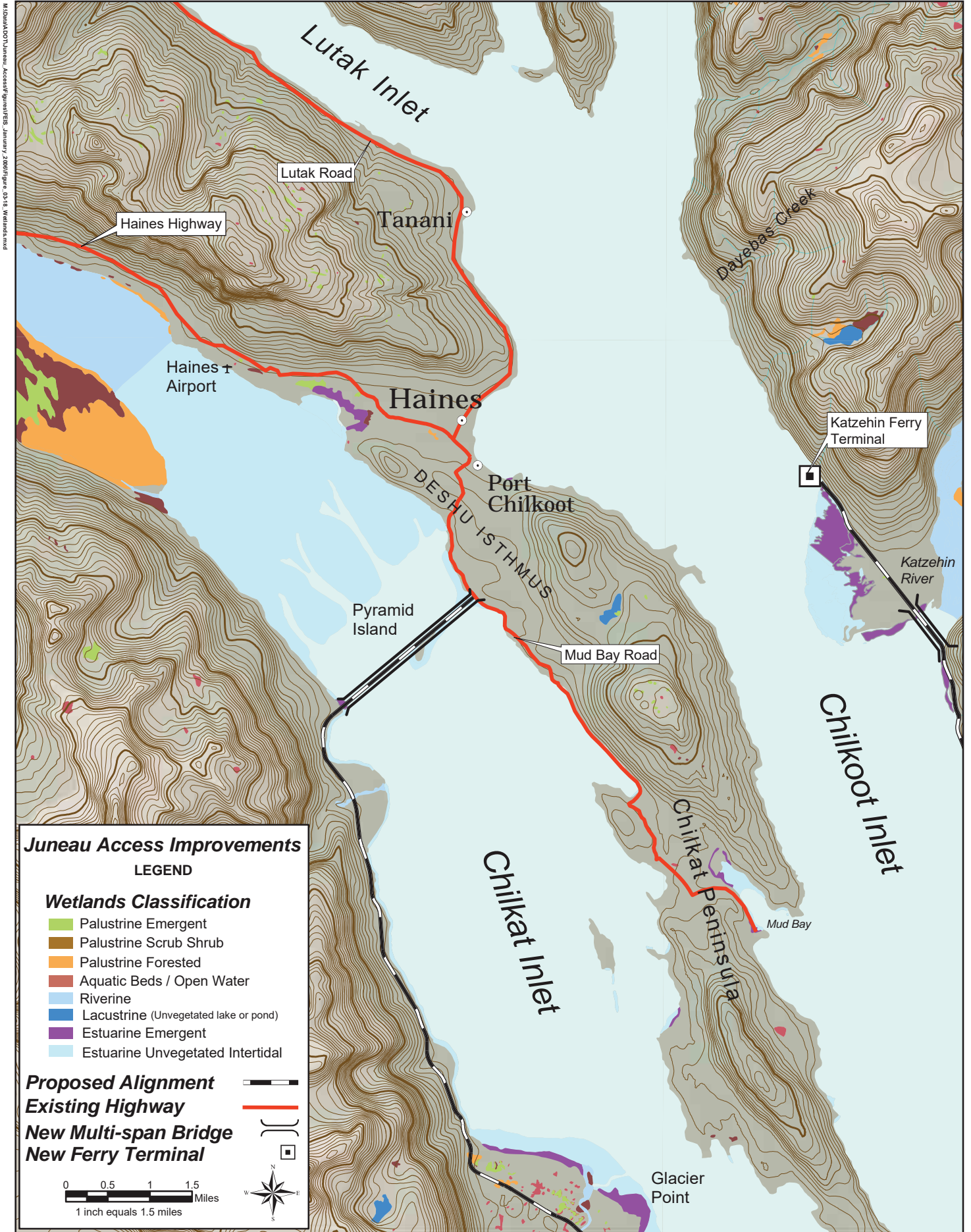


Figure 3-17
Wetlands Classifications for Haines Area

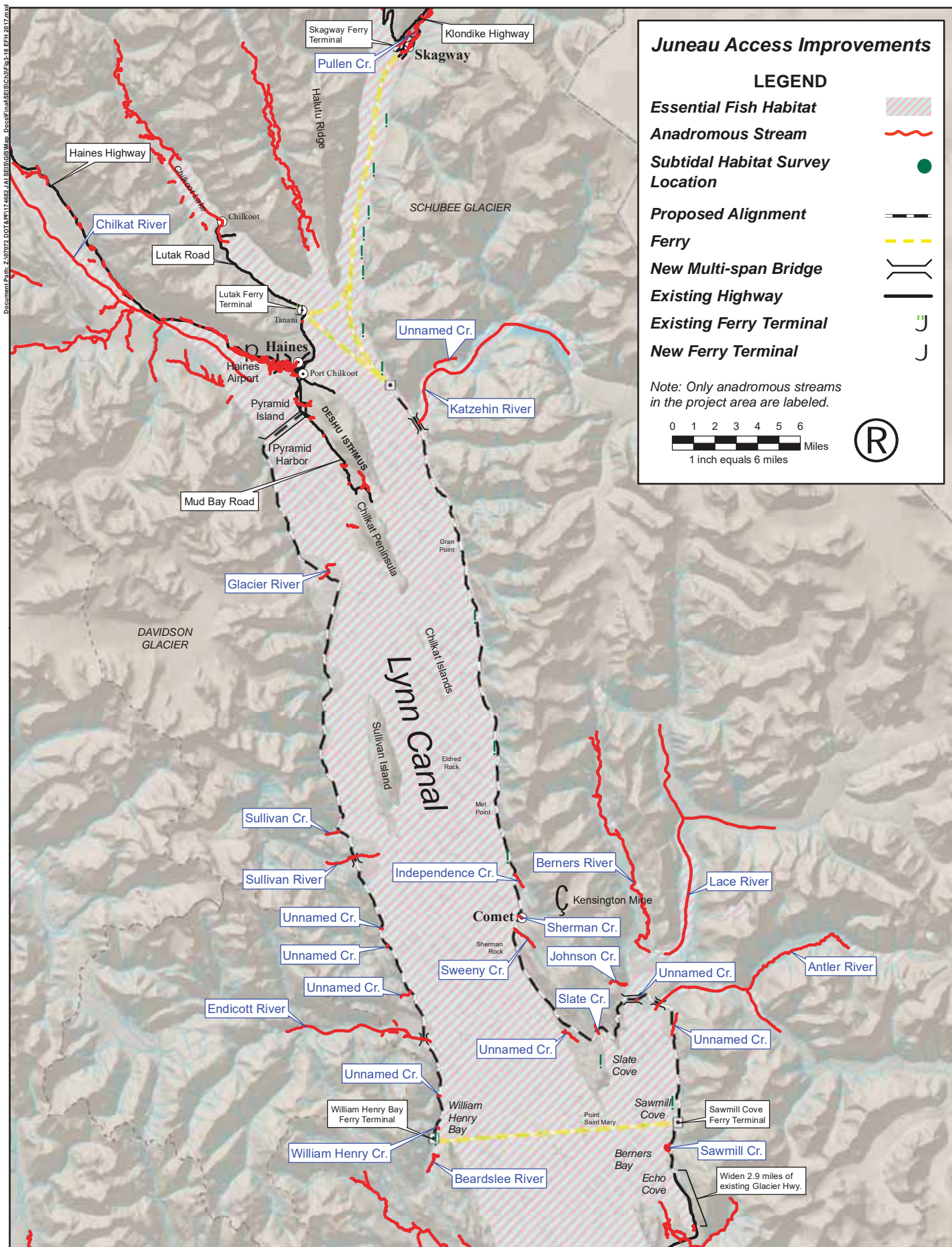


Figure 3-18
Essential Fish Habitat Including Anadromous Fish Streams

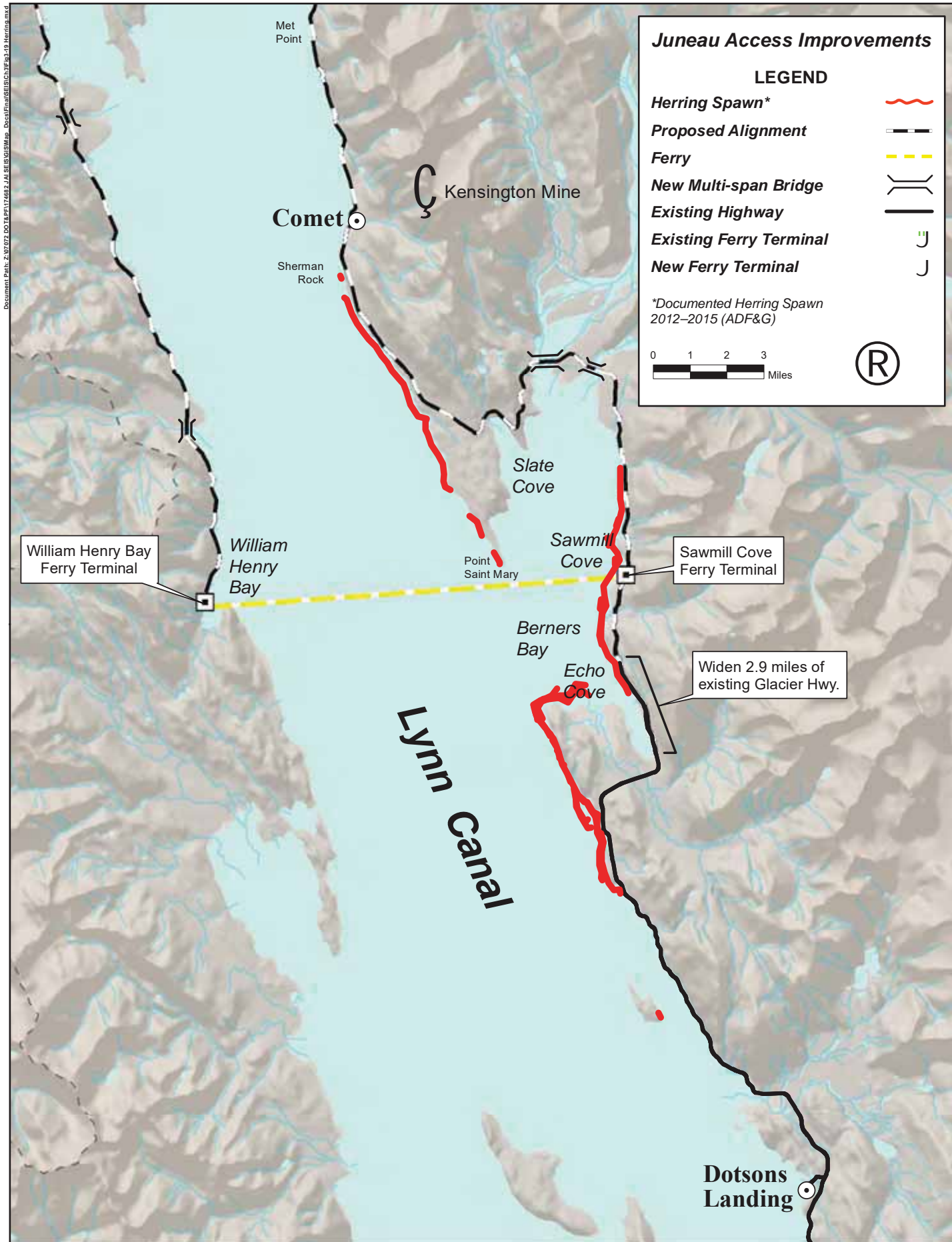


Figure 3-19
Herring Spawn

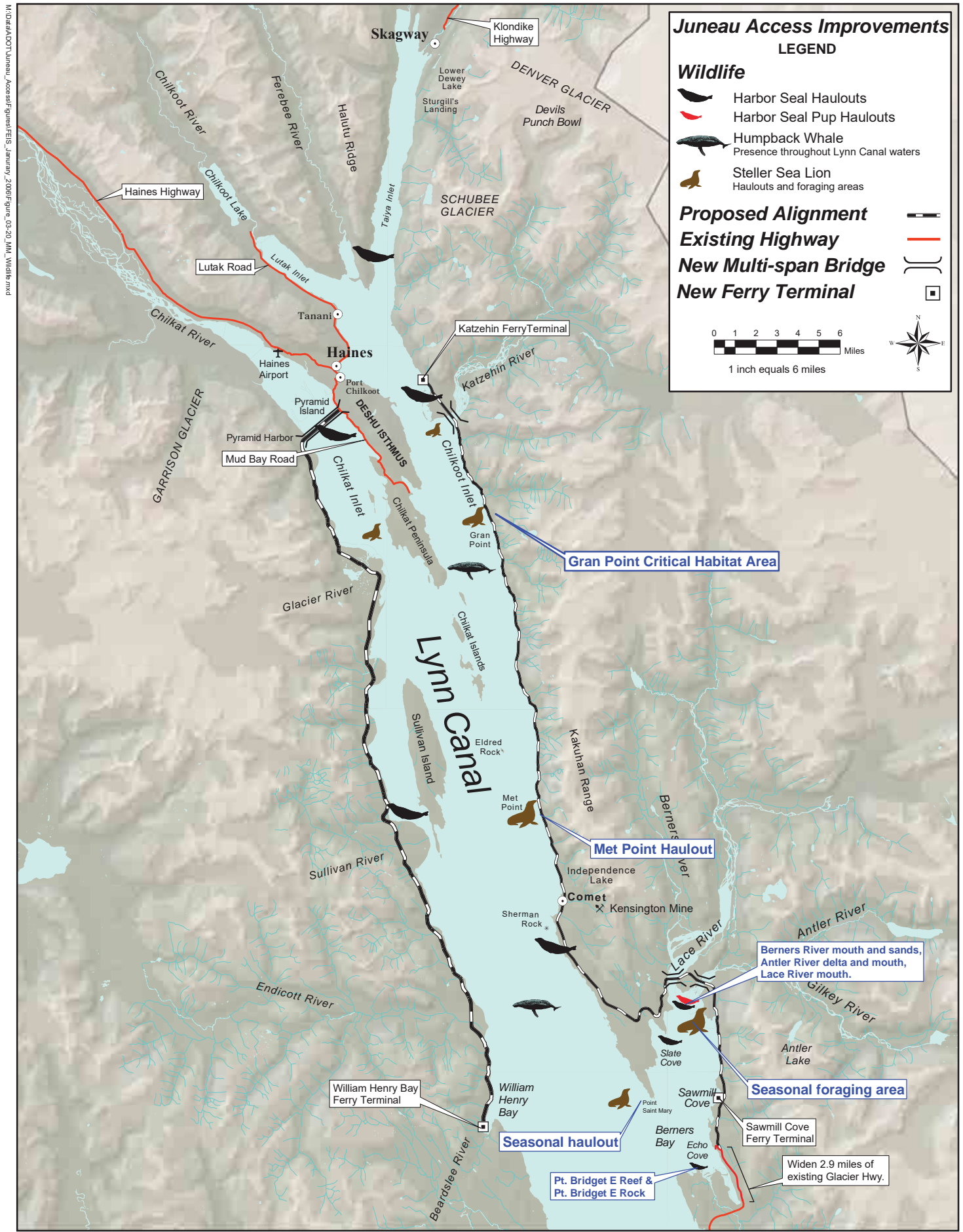


Figure 3-20
Marine Mammal Concentrations in Lynn Canal

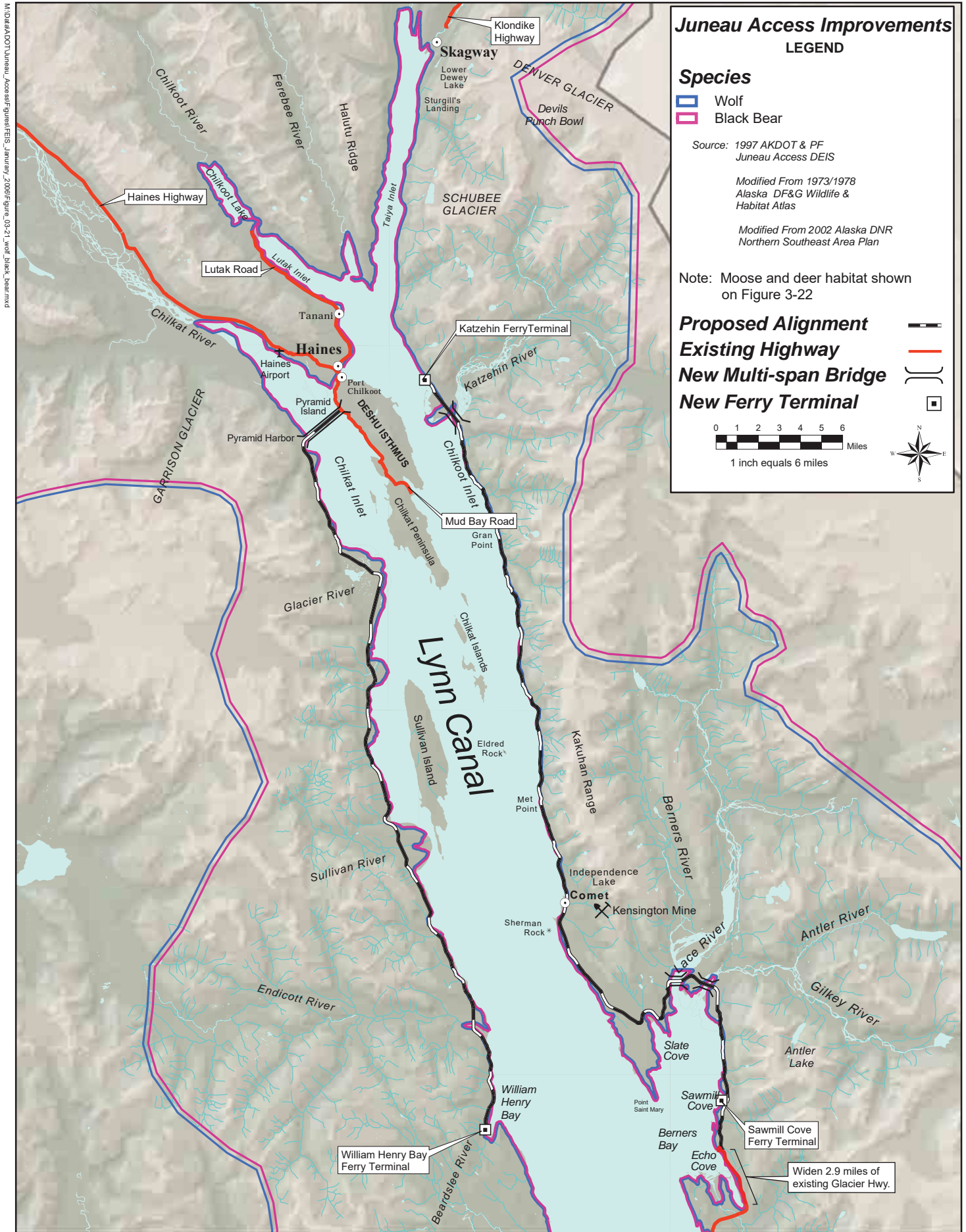


Figure 3-21
Wolf and Black Bear Habitat in Lynn Canal

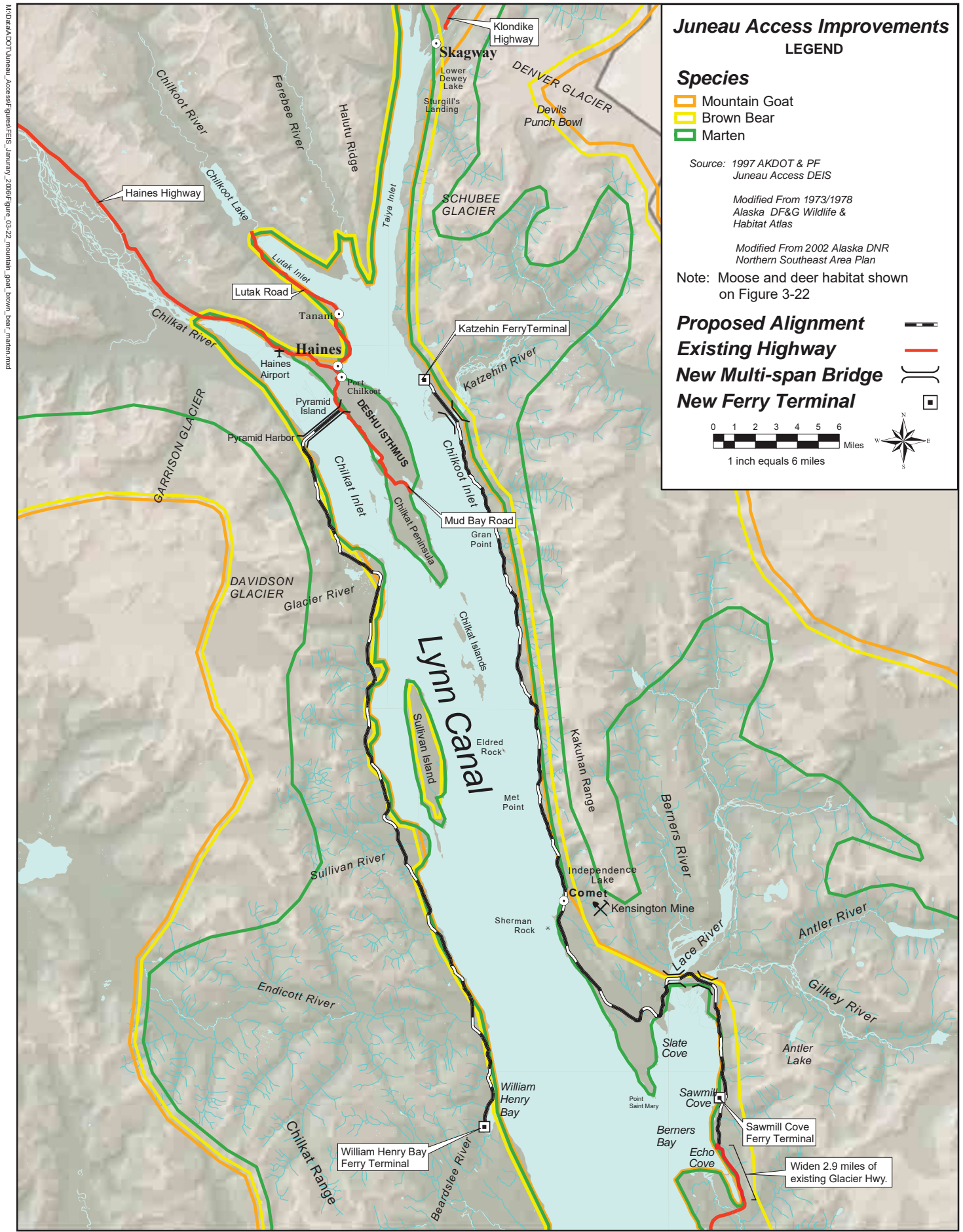
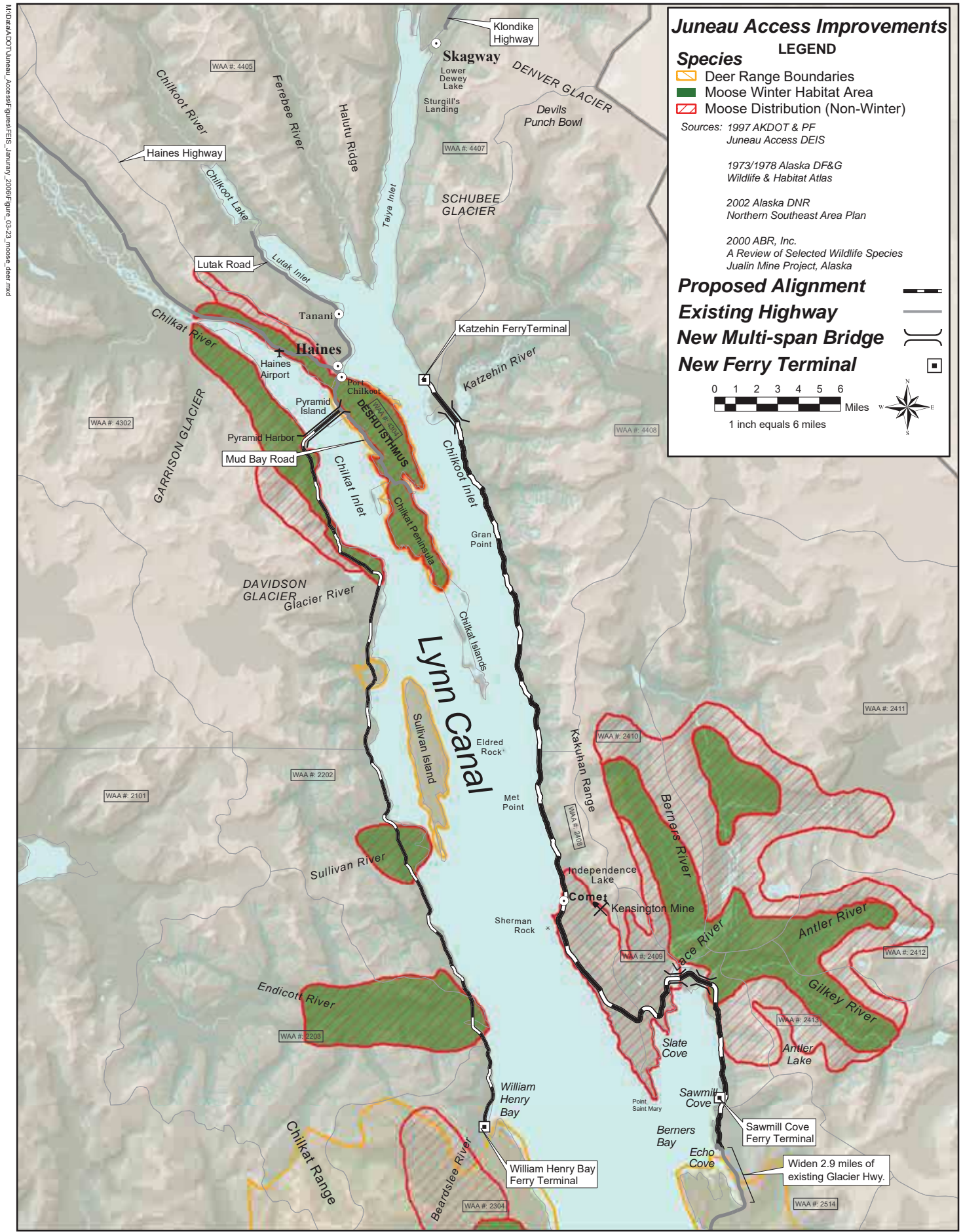


Figure 3-22
Mountain Goat, Brown Bear and Marten Habitat in Lynn Canal



M:\0164\DOT\Juneau_Access\figures\FEIS_Juneau\Figure_03-23_moose_deer.mxd

Figure 3-23
Moose and Deer Habitat in Lynn Canal

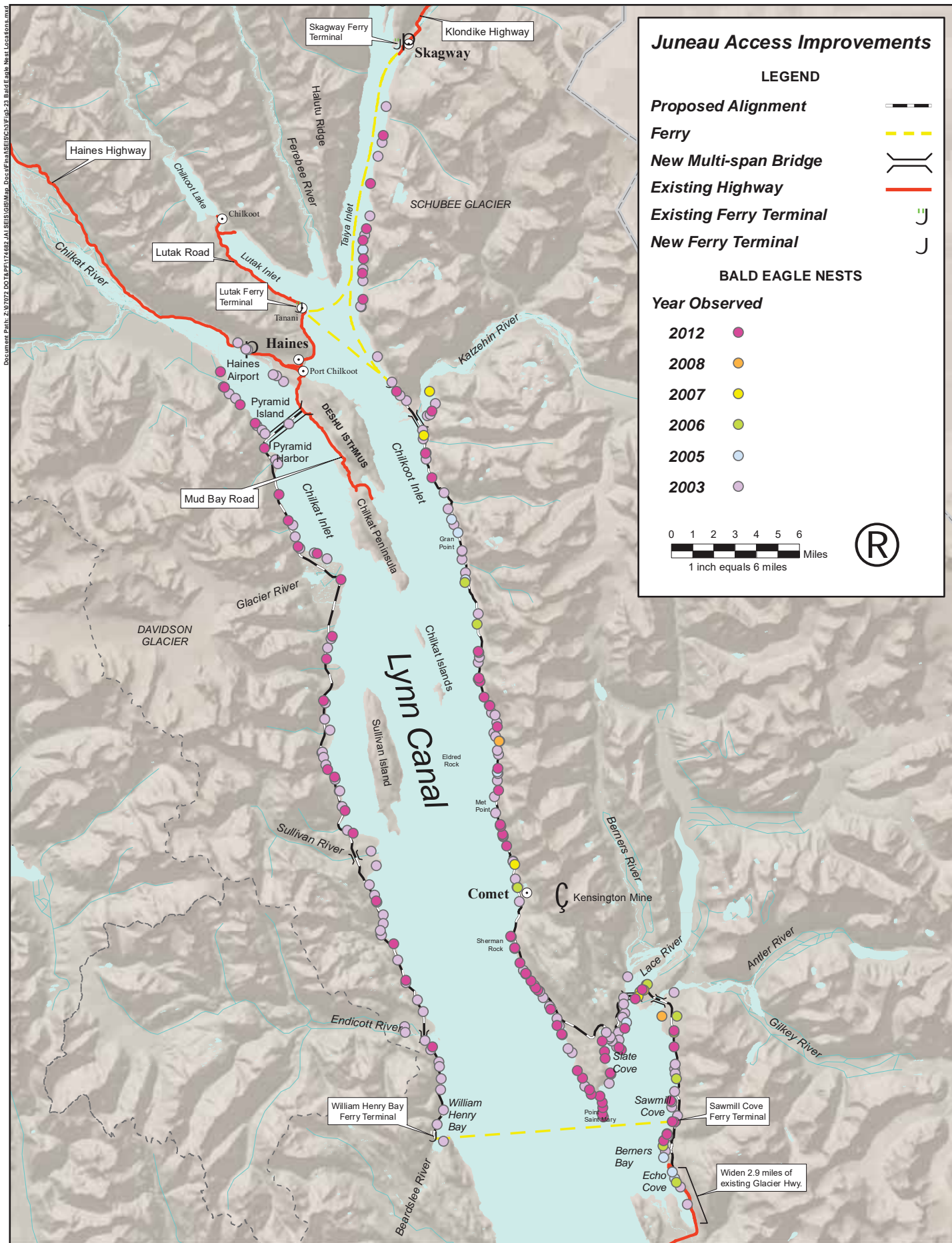


Figure 3-24
Bald Eagle Nest Locations