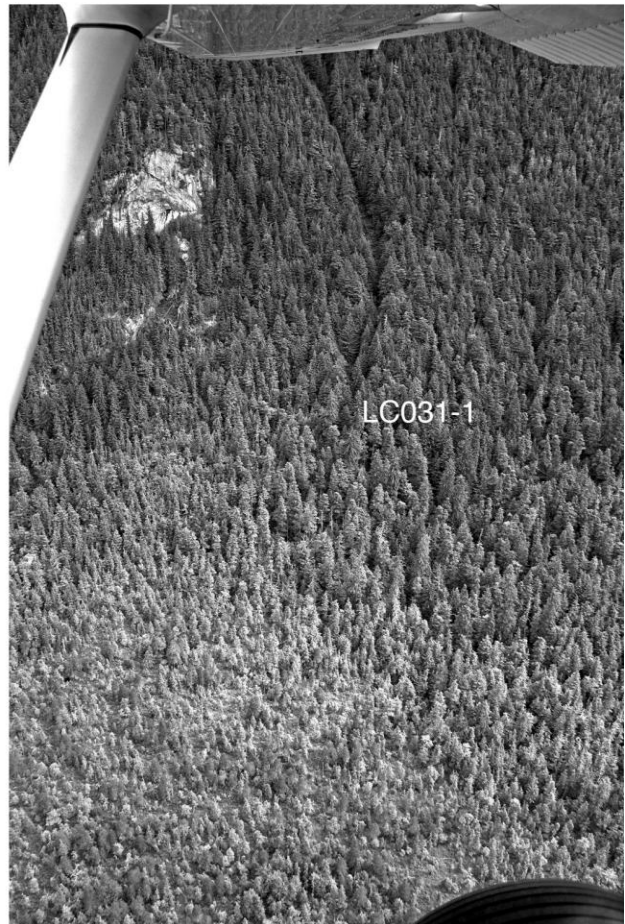
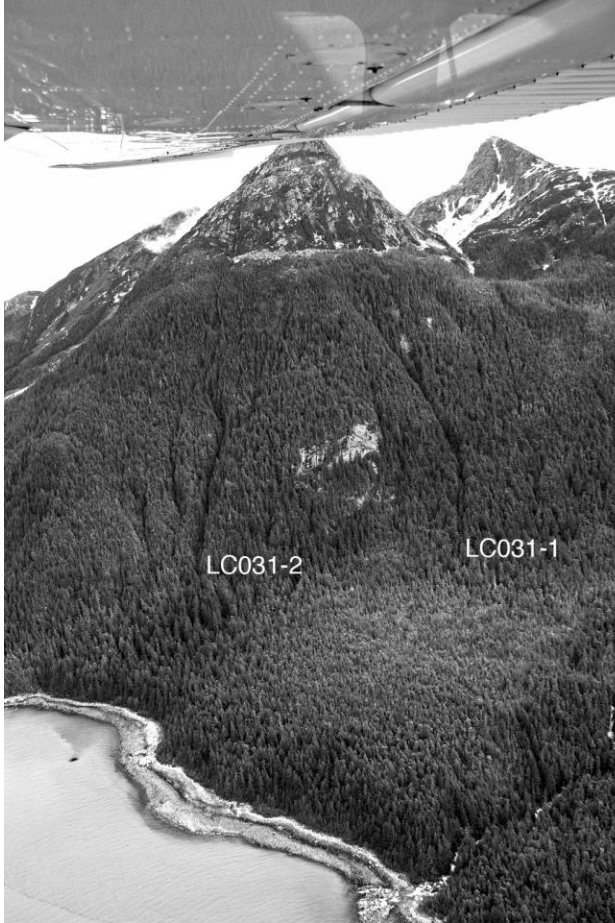


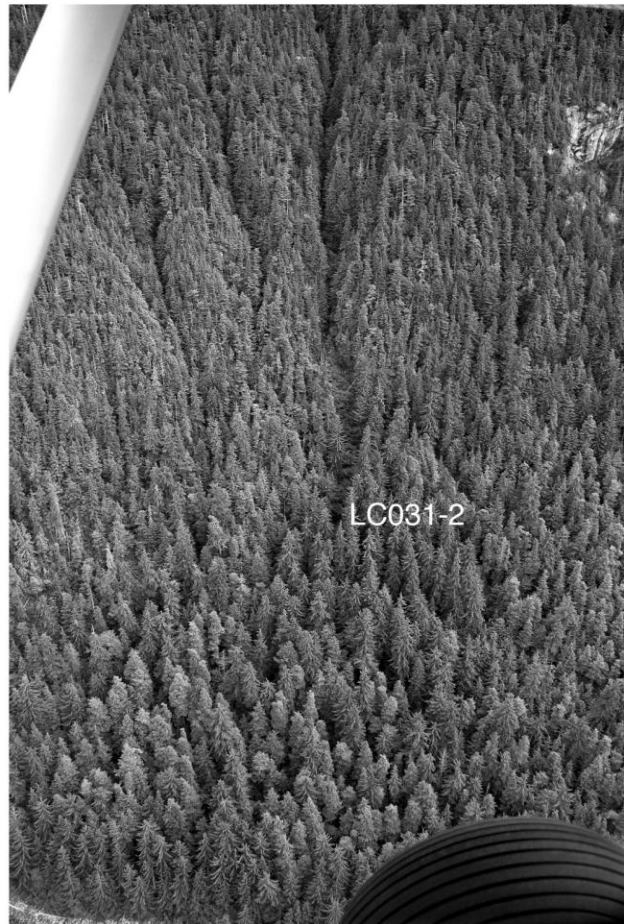
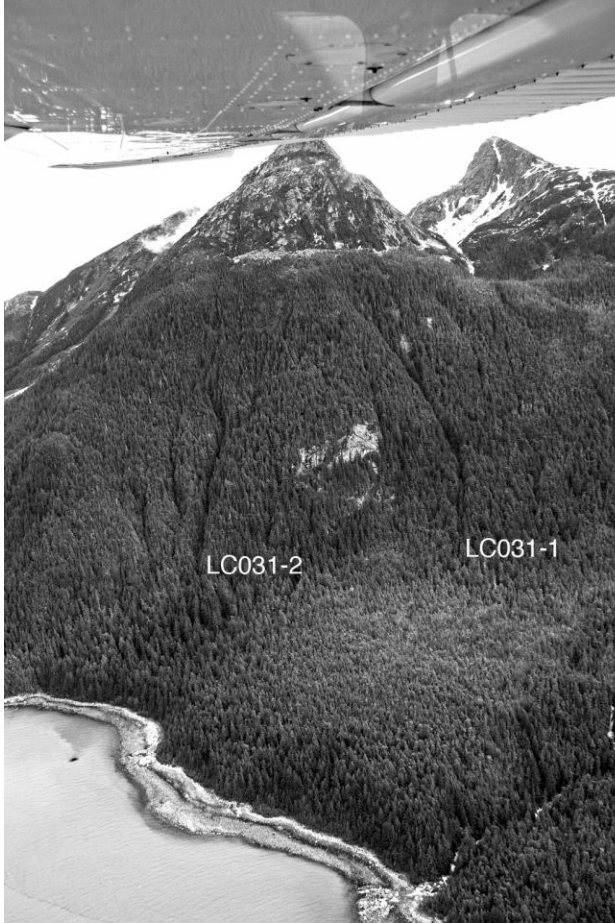
Path: LC031

Path Group:	North Yeldagalga
Latitude-Longitude:	59.080947 -135.142847
Max Width:	80 feet / 24 meters
Typical Width:	80 feet / 24 meters
Starting Elevation:	650 feet / 198 meters
Elevation Class:	low
Path Size:	small
Starting Zone Characteristics:	cliff gully
Start Aspect:	WSW
Path Type:	narrow gully
Runout Angle:	moderate decrease
Unmitigated avalanche hazard index (AHI):	0.41
Structural Mitigation:	Tunnels
Structurally Mitigated AHI:	0.00
AHI with Forecasting and Exploders:	0.00



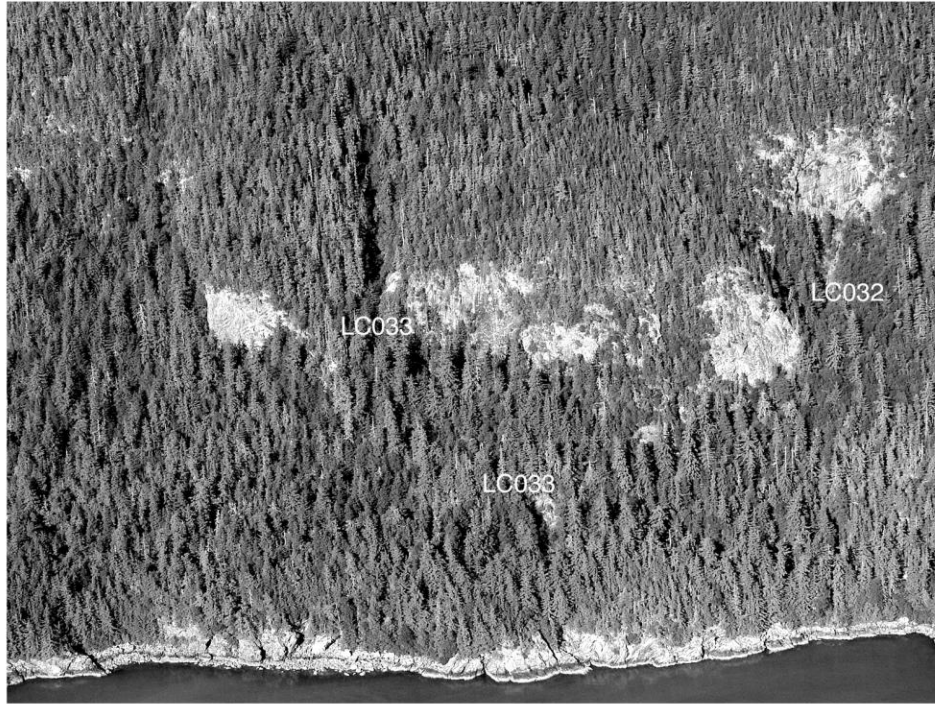
Path: LC031-1

Path Group:	South Katzehin
Latitude-Longitude:	59°09'04.89 -135°14'25.57
Max Width:	80 feet / 25 meters
Typical Width:	66 feet / 20 meters
Starting Elevation:	3500 feet / 1067 meters
Elevation Class:	high
Path Size:	small
Starting Zone Characteristics:	gullied face
Start Aspect:	SW
Path Type:	narrow gully
Runout Angle:	moderate decrease
Unmitigated avalanche hazard index (AHI):	3.88
Structural Mitigation:	None
Structurally Mitigated AHI:	3.88
AHI with Forecasting and Exploders:	1.16



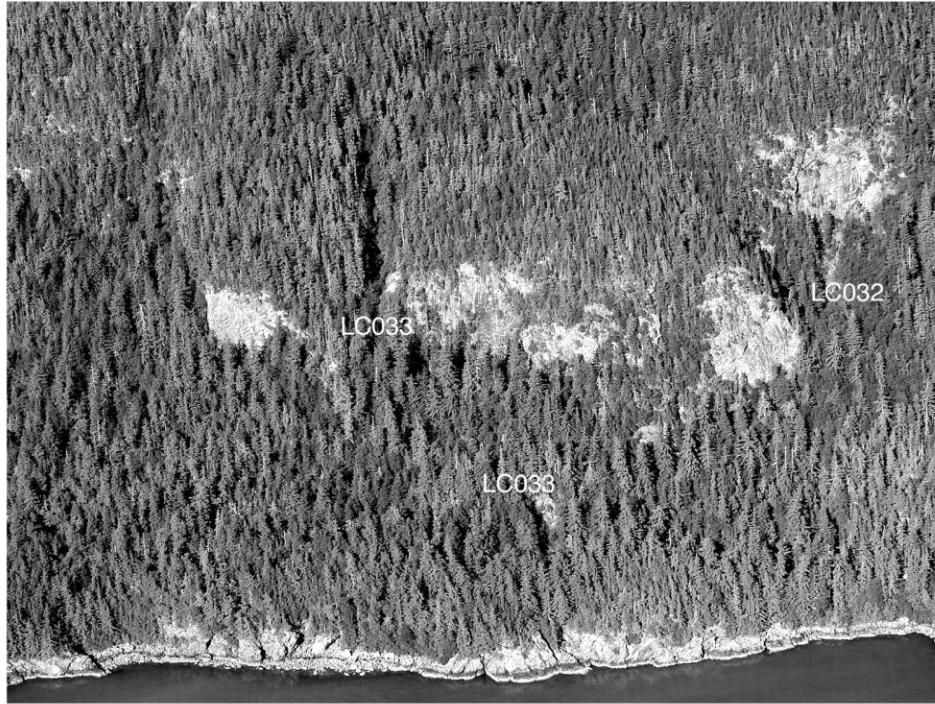
Path: LC031-2

Path Group:	South Katzehin
Latitude-Longitude:	59°09'06.05 -135°14'57.31
Max Width:	66 feet / 20 meters
Typical Width:	49 feet / 15 meters
Starting Elevation:	3500 feet / 1067 meters
Elevation Class:	high
Path Size:	small
Starting Zone Characteristics:	gullied shallow bowl
Start Aspect:	SSW
Path Type:	narrow gully
Runout Angle:	moderate decrease
Unmitigated avalanche hazard index (AHI):	3.88
Structural Mitigation:	None
Structurally Mitigated AHI:	3.88
AHI with Forecasting and Exploders:	1.16



Path: LC032

Path Group:	South Katzehin
Latitude-Longitude:	59.094729 -135.160762
Max Width :	270 feet / 82 meters
Typical Width:	80 feet / 24 meters
Starting Elevation:	900 feet / 274 meters
Elevation Class:	low
Path Size:	small
Starting Zone Characteristics:	gully through cliffs
Start Aspect:	WSW
Path Type:	gully in forest
Runout Angle:	moderate decrease
Unmitigated avalanche hazard index (AHI):	0.03
Structural Mitigation:	None
Structurally Mitigated AHI:	0.03
AHI with Forecasting and Exploders:	0.01



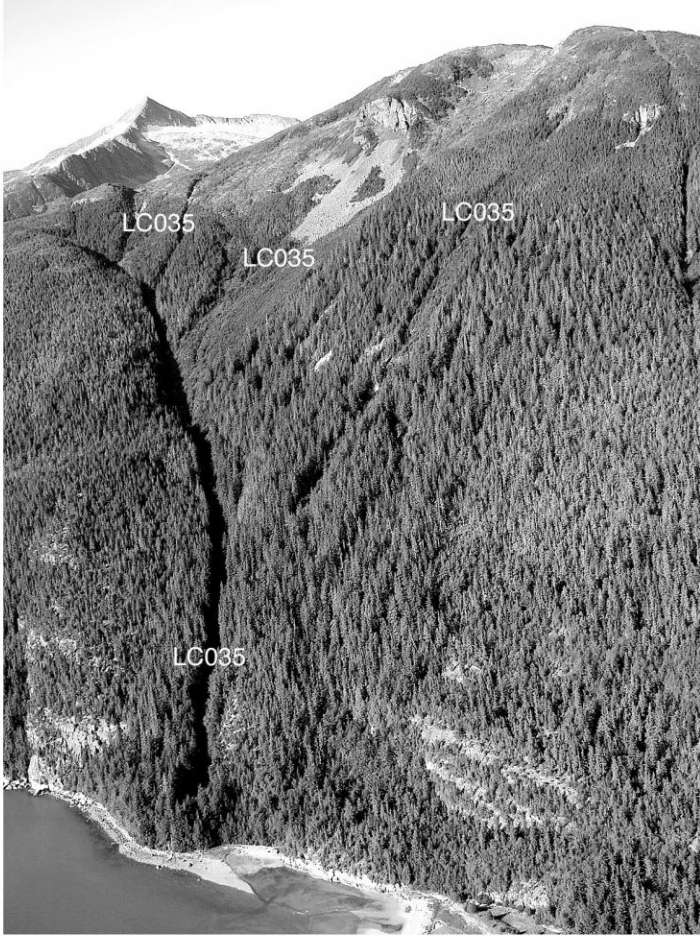
Path: LC033

Path Group:	South Katzehin
Latitude-Longitude:	59.095282 -135.161422
Max Width:	60 feet / 18 meters
Typical Width:	60 feet / 18 meters
Starting Elevation:	900 feet / 274 meters
Elevation Class:	low
Path Size:	small
Starting Zone Characteristics:	gully through cliffs
Start Aspect:	WSW
Path Type:	gully in forest
Runout Angle:	moderate decrease
Unmitigated avalanche hazard index (AHI):	0.02
Structural Mitigation:	None
Structurally Mitigated AHI:	0.00
AHI with Forecasting and Exploders:	1.16



Path: LC034

Path Group:	South Katzehin
Latitude-Longitude:	59.104932 -135.163693
Max Width:	80 feet / 24 meters
Typical Width:	60 feet / 18 meters
Starting Elevation:	700 feet / 213 meters
Elevation Class:	low
Path Size:	small
Starting Zone Characteristics:	gully through cliffs
Start Aspect:	WSW
Path Type:	gully in forest
Runout Angle:	moderate decrease
Unmitigated avalanche hazard index (AHI):	0.03
Structural Mitigation:	None
Structurally Mitigated AHI:	0.03
AHI with Forecasting and Exploders:	0.01



Path: LC035

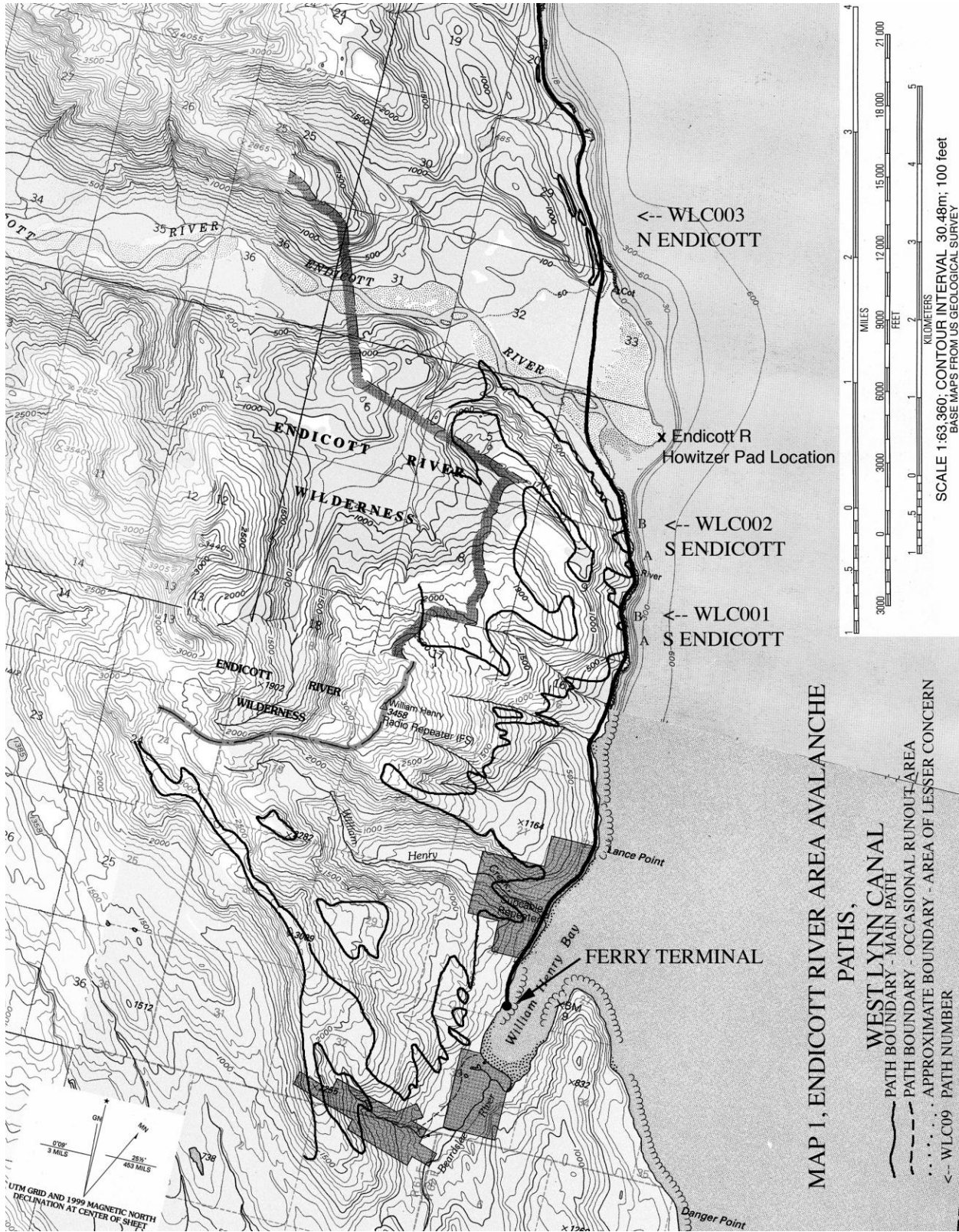
Path Group:	North Katzehin
Latitude-Longitude:	59.133721 -135.193685
Max Width:	260 feet / 79 meters
Typical Width:	110 feet / 34 meters
Starting Elevation:	3400 feet / 1036 meters
Elevation Class:	high
Path Size:	large
Starting Zone Characteristics:	multiple big bowls, faces and gullies
Start Aspect:	WSW
Path Type:	confined large diagonal gully
Runout Angle:	decreases markedly; affects ferry approach
Unmitigated avalanche hazard index (AHI):	0.22
Structural Mitigation:	Fill 0.2x
Structurally Mitigated AHI:	0.04
AHI with Forecasting and Exploders:	0.01

10. Atlas - West Lynn Canal Avalanche Maps

DRAFT

This Page Left Intentionally Blank

DRAFT



MAP 1, ENDICOTT RIVER AREA AVALANCHE PATHS,
WEST LYNN CANAL
 PATH BOUNDARY - MAIN PATH
 PATH BOUNDARY - OCCASIONAL RUNOUT AREA
 APPROXIMATE BOUNDARY - AREA OF LESSER CONCERN
 WLC09 PATH NUMBER

