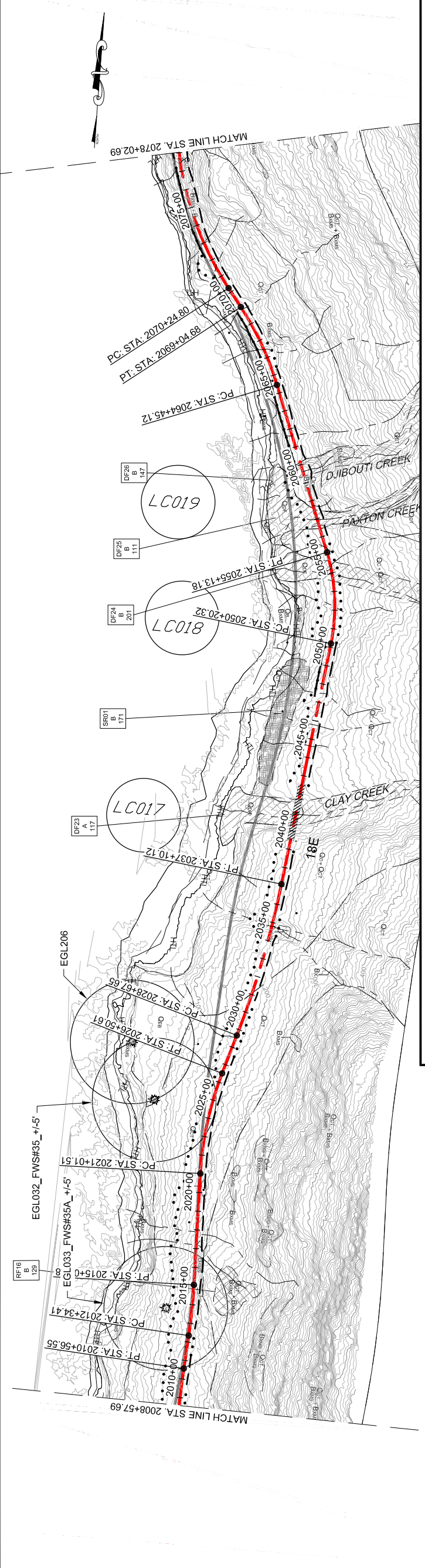


PATH: C:\UNITS\10\ORDER\10-2013 EIS DWGSET\71100\_2013 EIS  
 GEARY, NATE (DOT)  
 TAB: EL22.dwg, October 04, 2013 12:53:12 PM

APPENDUM NUMBER	ATTACHMENT NUMBER

RECORD OF REVISIONS	
DATE	DESCRIPTION



### LEGEND

	CURRENT ALIGNMENT
	PROPOSED FILL SLOPE
	PROPOSED CUT SLOPE
	PROPOSED WALL
	2006 FEIS ALIGNMENT
	2008 CORP PERMIT ALIGNMENT

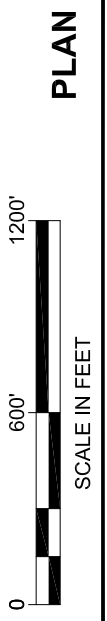
  

### GEO HAZARD AREA LEGEND

	DEBRIS FLOW
	HAZARD ROCK
	LAND SLIDE
	ROCK FALL
	ROCK SLIDE
	SOIL RAVELING

	BRIDGES
	WETLAND
	AVAILANCHE CHUTE
	AVAILANCHE STARTING ZONE
	EAGLE TREE



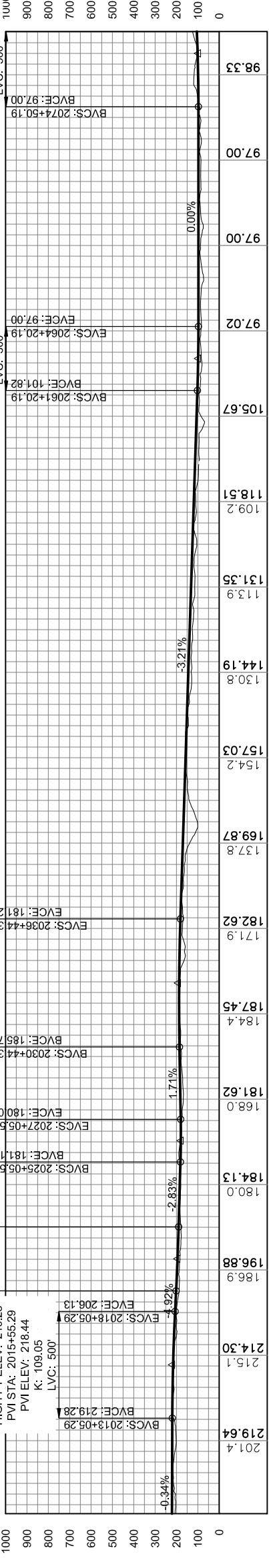
LOW PT STA: 2022+01.59  
 LOW PT ELEV: 189.75  
 PVI STA: 2020+51.59  
 PVI ELEV: 194.00  
 K: 143.56  
 LVC: 300'

LOW PT STA: 2026+30.42  
 LOW PT ELEV: 179.37  
 PVI STA: 2026+05.59  
 PVI ELEV: 178.30  
 K: 44.05  
 LVC: 200'

HIGH PT STA: 2032+52.67  
 HIGH PT ELEV: 187.57  
 PVI STA: 2033+44.39  
 PVI ELEV: 190.91  
 K: 122.05  
 LVC: 600'

LOW PT STA: 2064+20.19  
 LOW PT ELEV: 97.00  
 PVI STA: 2062+70.19  
 PVI ELEV: 97.00  
 K: 93.47  
 LVC: 300'

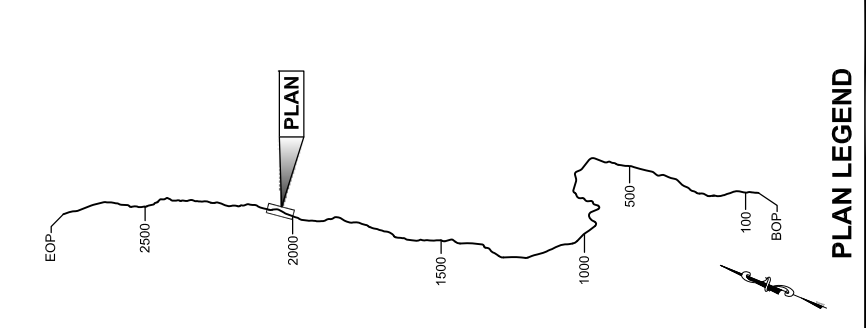
LOW PT STA: 2074+50.19  
 LOW PT ELEV: 97.00  
 PVI STA: 2077+00.19  
 PVI ELEV: 97.00  
 K: 84.31  
 LVC: 500'



STATION	ELEVATION	STATION	ELEVATION	STATION	ELEVATION	STATION	ELEVATION
2012+00	219.64	2020+00	196.88	2028+00	181.62	2036+00	182.62
2014+00	214.30	2022+00	186.9	2030+00	181.62	2032+00	187.45
2016+00	215.1	2024+00	184.13	2032+00	184.4	2034+00	187.45
2018+00	219.28	2026+00	180.0	2034+00	185.79	2036+00	182.62
2020+00	219.28	2028+00	178.0	2036+00	185.79	2038+00	182.62
2022+00	196.88	2030+00	181.62	2038+00	182.62	2040+00	169.87
2024+00	184.13	2032+00	184.4	2040+00	169.87	2042+00	169.87
2026+00	180.0	2034+00	185.79	2044+00	154.2	2046+00	157.03
2028+00	178.0	2036+00	185.79	2048+00	144.19	2050+00	144.19
2030+00	181.62	2038+00	185.79	2052+00	131.35	2054+00	131.35
2032+00	184.4	2040+00	185.79	2056+00	118.51	2058+00	118.51
2034+00	185.79	2042+00	185.79	2060+00	109.2	2062+00	109.2
2036+00	182.62	2044+00	185.79	2064+00	105.67	2066+00	105.67
2038+00	182.62	2046+00	185.79	2068+00	87.3	2070+00	87.3
2040+00	169.87	2048+00	185.79	2072+00	97.00	2074+00	97.00
2042+00	169.87	2050+00	185.79	2074+00	97.00	2076+00	97.00
2044+00	157.03	2052+00	185.79	2076+00	98.33	2078+00	98.33
2046+00	154.2	2054+00	185.79				
2048+00	144.19	2056+00	185.79				
2050+00	144.19	2058+00	185.79				
2052+00	131.35	2060+00	185.79				
2054+00	131.35	2062+00	185.79				
2056+00	118.51	2064+00	185.79				
2058+00	118.51	2066+00	185.79				
2060+00	109.2	2068+00	185.79				
2062+00	109.2	2070+00	185.79				
2064+00	105.67	2072+00	185.79				
2066+00	105.67	2074+00	185.79				
2068+00	87.3	2076+00	185.79				
2070+00	87.3						
2072+00	97.00						
2074+00	97.00						
2076+00	98.33						
2078+00	98.33						

**PROFILE**

**DO NOT SCALE FROM THESE DRAWINGS USE DIMENSIONS**



### PLAN LEGEND

CHECKED BY:

DRAFT

DESIGNED BY:

DRAWN BY:

STATE OF ALASKA  
 DEPARTMENT OF TRANSPORTATION  
 & PUBLIC FACILITIES  
 SOUTHEAST REGION

**JNU-EAST LYNN CANAL  
 HIGHWAY ALTERNATIVE 2B  
 PROJECT #71100**

## 2013 EIS PLAN VIEW

PROJECT DESIGNATION	
STATE	YEAR
ALASKA	2013

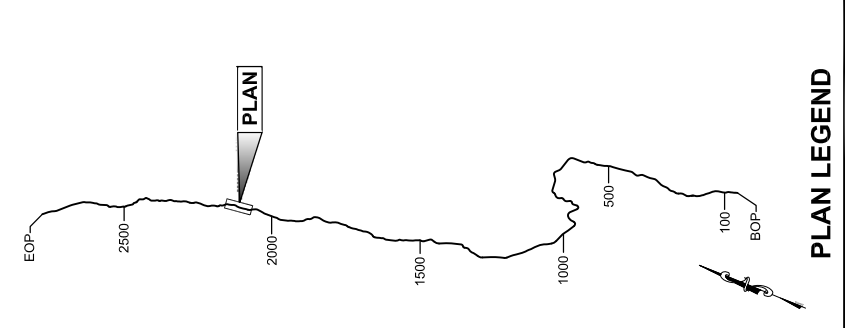
SHEET NUMBER	TOTAL SHEETS
EL28	38

*This page intentionally left blank.*

GEARY, NATE (DOT)  
 DATE: 10/04/2013 12:53:47 PM

RECORD OF REVISIONS	DESCRIPTION
NO.	DATE

ATTACHMENT NUMBER



CHECKED BY:

**DRAFT**

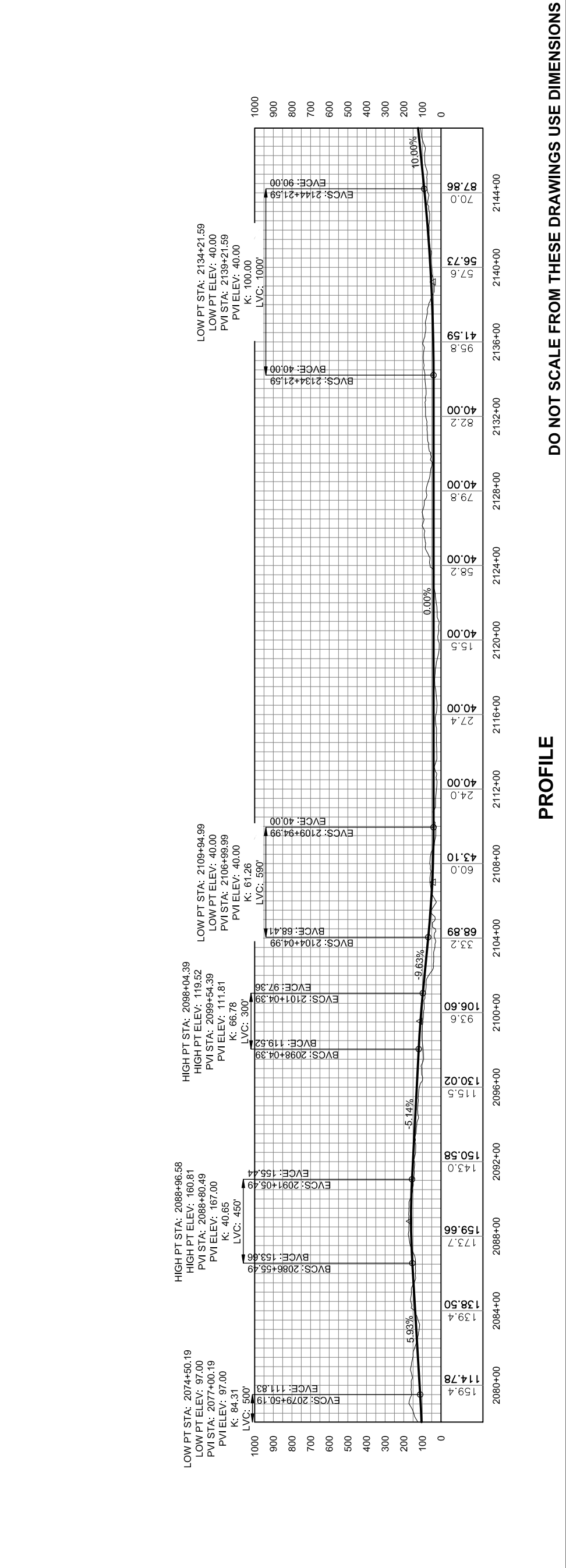
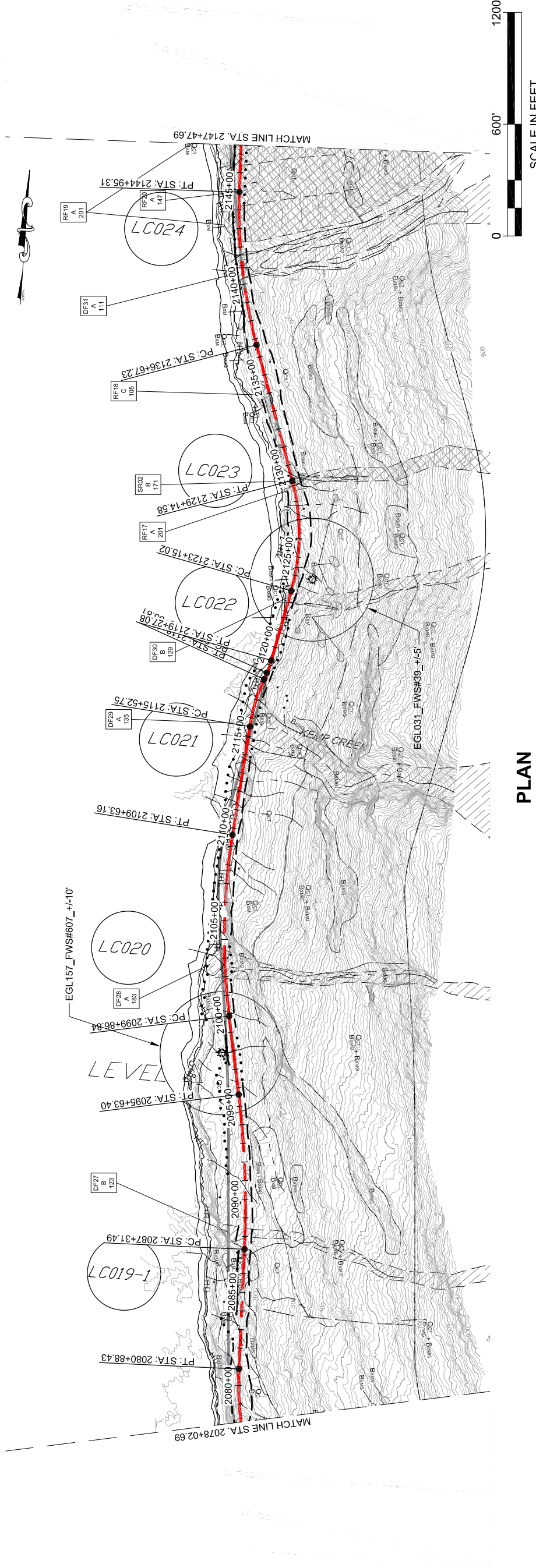
DESIGNED BY:  
 DRAWN BY:

STATE OF ALASKA  
 DEPARTMENT OF TRANSPORTATION  
 & PUBLIC FACILITIES  
 SOUTHEAST REGION

**JNU-EAST LYNN CANAL  
 HIGHWAY ALTERNATIVE 2B  
 PROJECT #71100**

**2013 EIS  
 PLAN VIEW**

PROJECT DESIGNATION	<b>71100</b>
STATE	<b>ALASKA</b>
YEAR	<b>2013</b>
SHEET NUMBER	<b>EL29</b>
TOTAL SHEETS	<b>38</b>



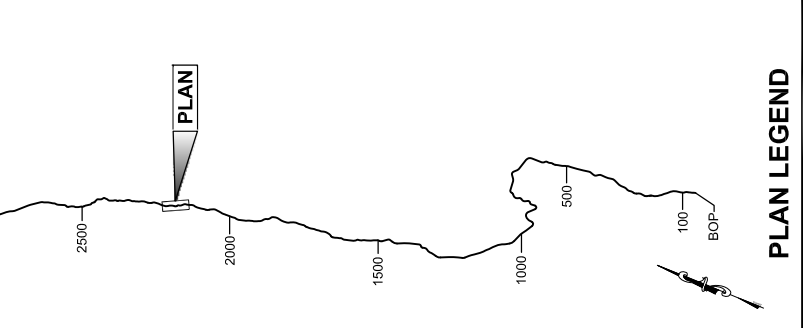
*This page intentionally left blank.*

GEARY, NATE (DOT)  
 APPENDUM NUMBER

RECORD OF REVISIONS

NO.	DATE	DESCRIPTION

ATTACHMENT NUMBER



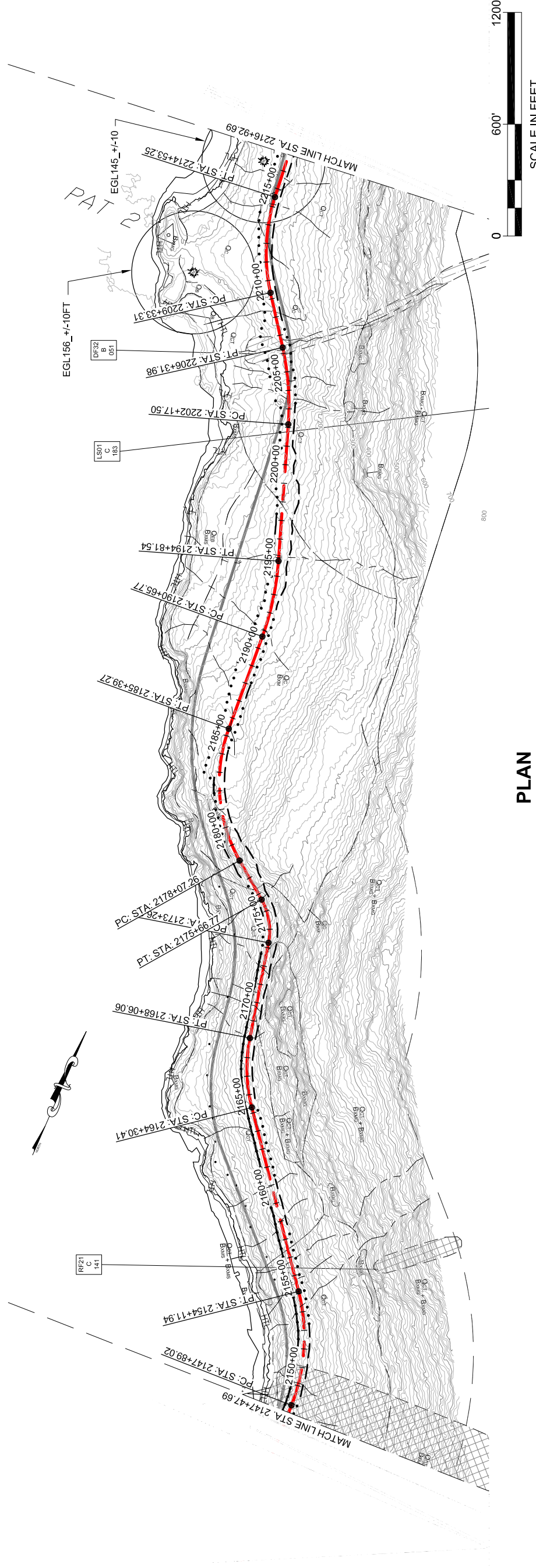
CHECKED BY:

DESIGNED BY:  
 DRAWN BY:

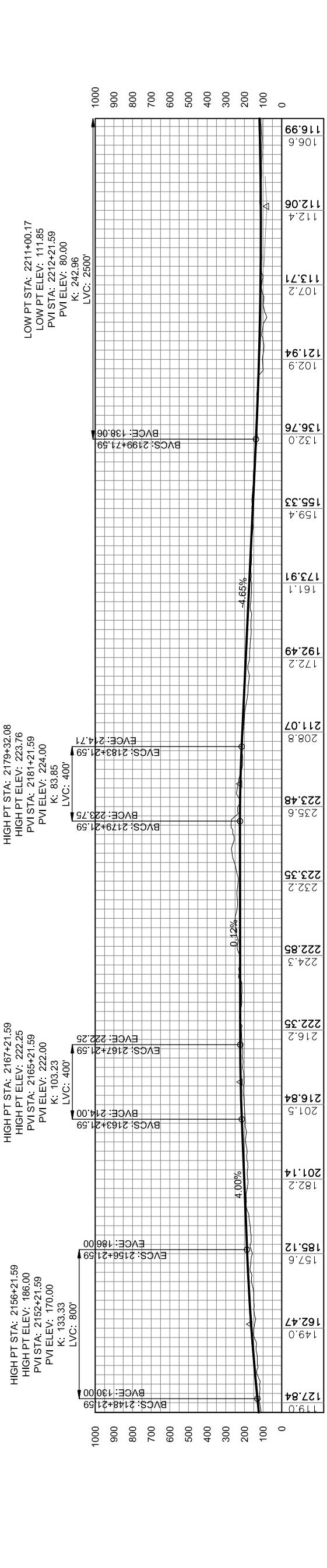
STATE OF ALASKA  
 DEPARTMENT OF TRANSPORTATION  
 & PUBLIC FACILITIES  
 SOUTHEAST REGION  
 JUNU-EAST LYNN CANAL  
 HIGHWAY ALTERNATIVE 2B  
 PROJECT #71100

**2013 EIS  
 PLAN VIEW**

PROJECT DESIGNATION	71100
STATE	ALASKA
YEAR	2013
SHEET NUMBER	EL30
TOTAL SHEETS	38



**PLAN**



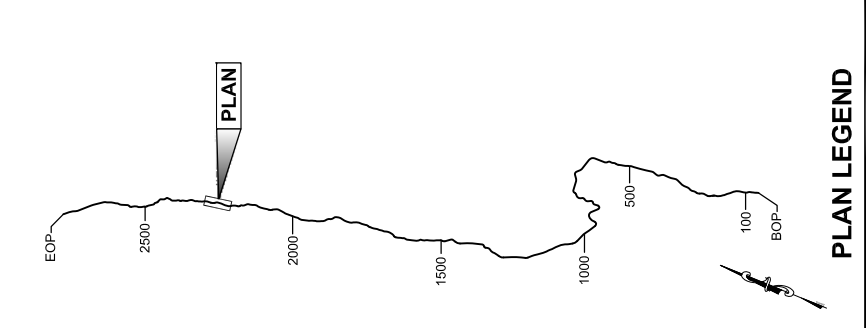
**PROFILE**

DO NOT SCALE FROM THESE DRAWINGS USE DIMENSIONS

*This page intentionally left blank.*

PATH: C:\UNITS\10\DRS\10-2013 EIS DWG\SR71100\_2013 EIS  
 GEARY, NATE (DOT)  
 TAB: EL3\Friday, October 04, 2013 12:54:46 PM

RECORD OF REVISIONS		
NO.	DATE	DESCRIPTION



CHECKED BY:

**PLAN LEGEND**

DESIGNED BY:  
 DRAWN BY:

STATE OF ALASKA  
 DEPARTMENT OF TRANSPORTATION  
 & PUBLIC FACILITIES  
 SOUTHEAST REGION

**JNU-EAST LYNN CANAL  
 HIGHWAY ALTERNATIVE 2B  
 PROJECT #71100**

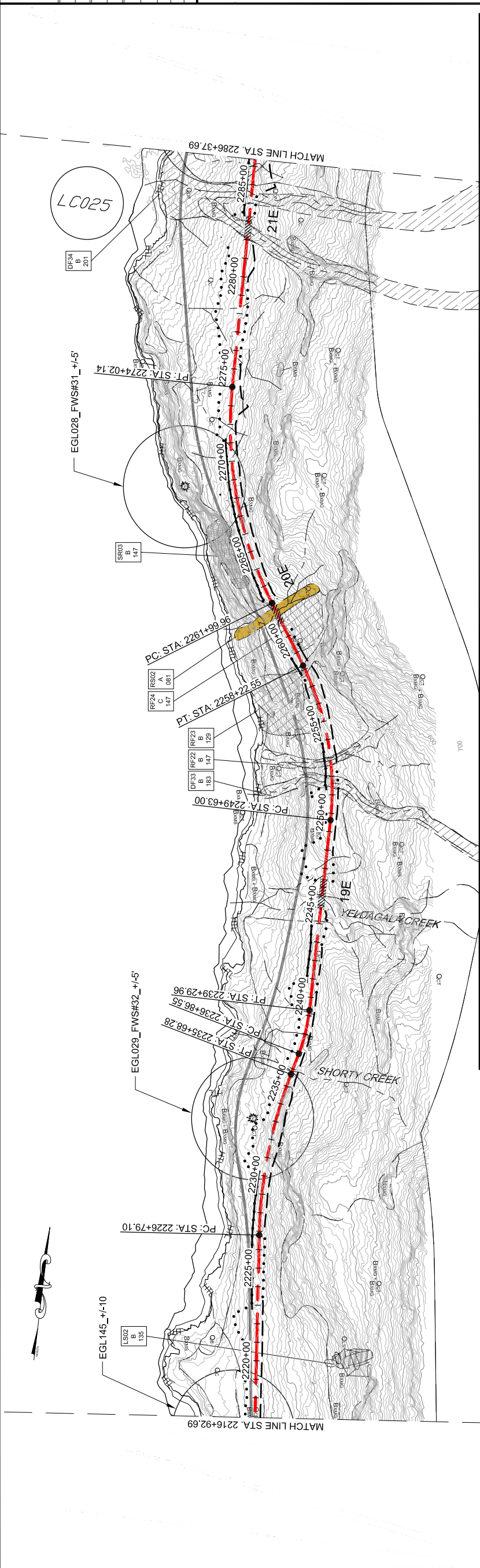
**2013 EIS  
 PLAN VIEW**

PROJECT DESIGNATION  
**71100**

STATE	YEAR
ALASKA	2013

SHEET NUMBER  
**EL31**

TOTAL SHEETS  
**38**



**LEGEND**

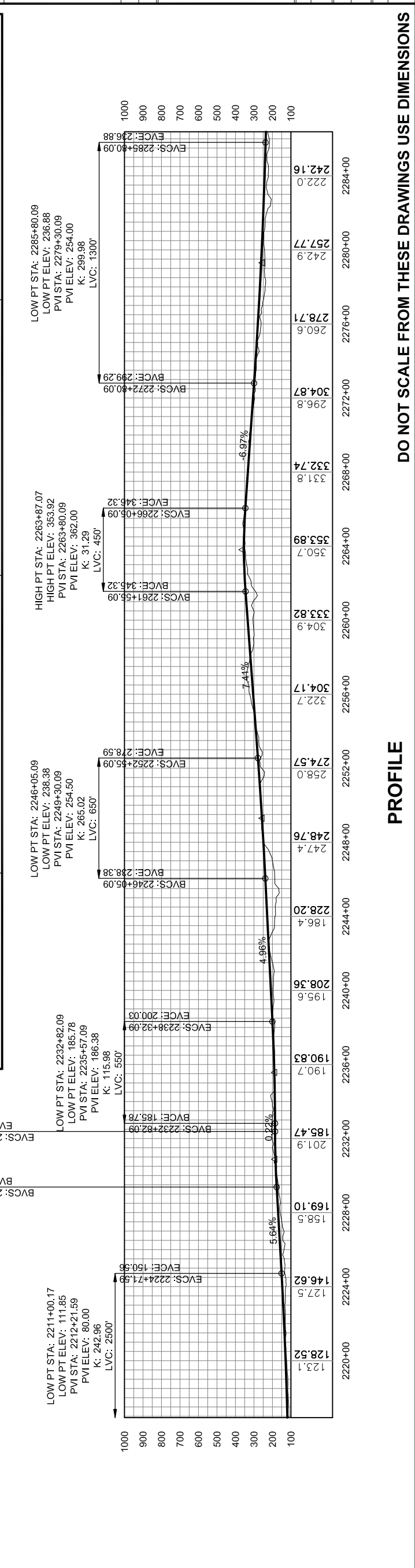
	CURRENT ALIGNMENT
	PROPOSED FILL SLOPE
	PROPOSED CUT SLOPE
	PROPOSED WALL
	2006 FEIS ALIGNMENT
	2008 CORP PERMIT ALIGNMENT

**GEO HAZARD AREA LEGEND**

	BRIDGES
	WETLAND
	DEBRIS FLOW
	HAZARD ROCK
	LAND SLIDE
	ROCK FALL
	ROCK SLIDE
	SOIL RAVELING

**PLAN**

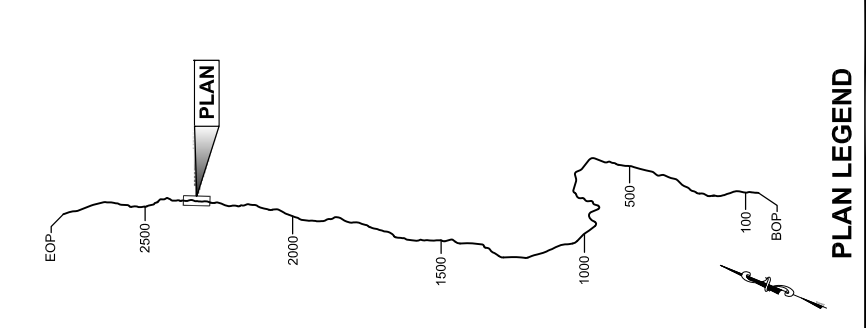
SCALE IN FEET  
 0 600' 1200'



*This page intentionally left blank.*



APPENDIX NUMBER	
ATTACHMENT NUMBER	
RECORD OF REVISIONS	
DATE	DESCRIPTION
NO.	

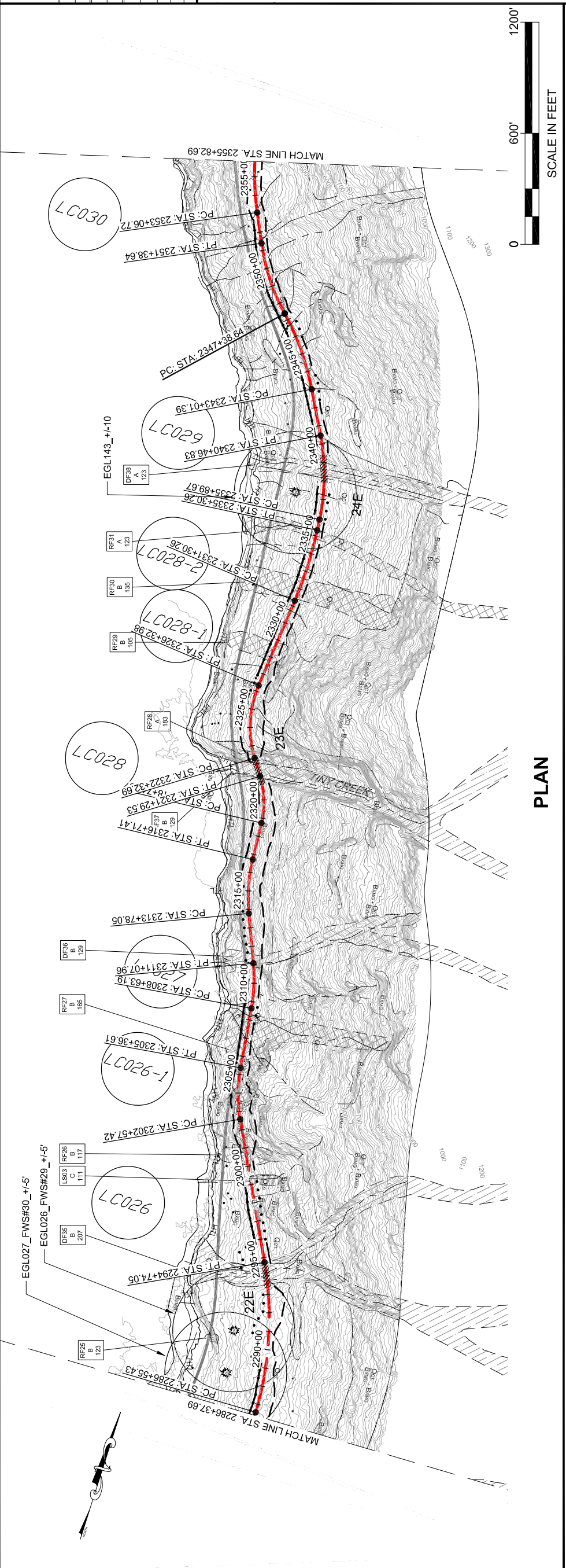


CHECKED BY:  
 DESIGNED BY:  
 DRAWN BY:

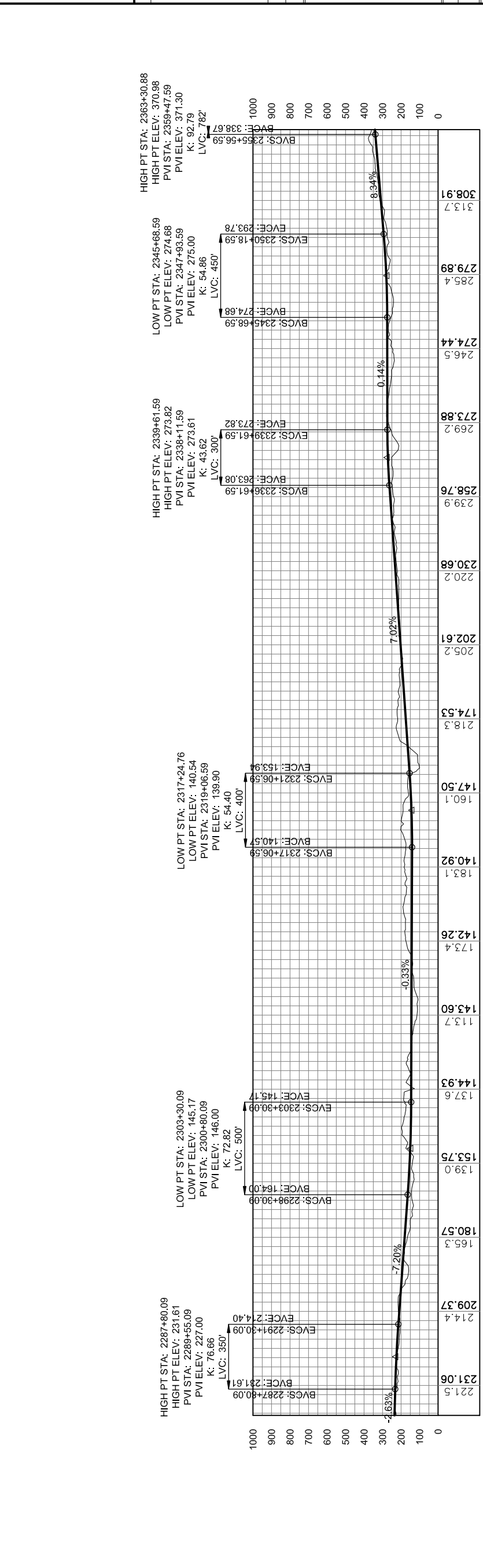
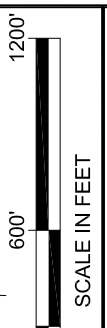
STATE OF ALASKA  
 DEPARTMENT OF TRANSPORTATION  
 & PUBLIC FACILITIES  
 SOUTHEAST REGION  
**JNU-EAST LYNN CANAL  
 HIGHWAY ALTERNATIVE 2B  
 PROJECT #71100**

**2013 EIS  
 PLAN VIEW**  
 PROJECT DESIGNATION  
**71100**

STATE	YEAR
ALASKA	2013
SHEET NUMBER	TOTAL SHEETS
EL32	38



**PLAN**



**PROFILE**

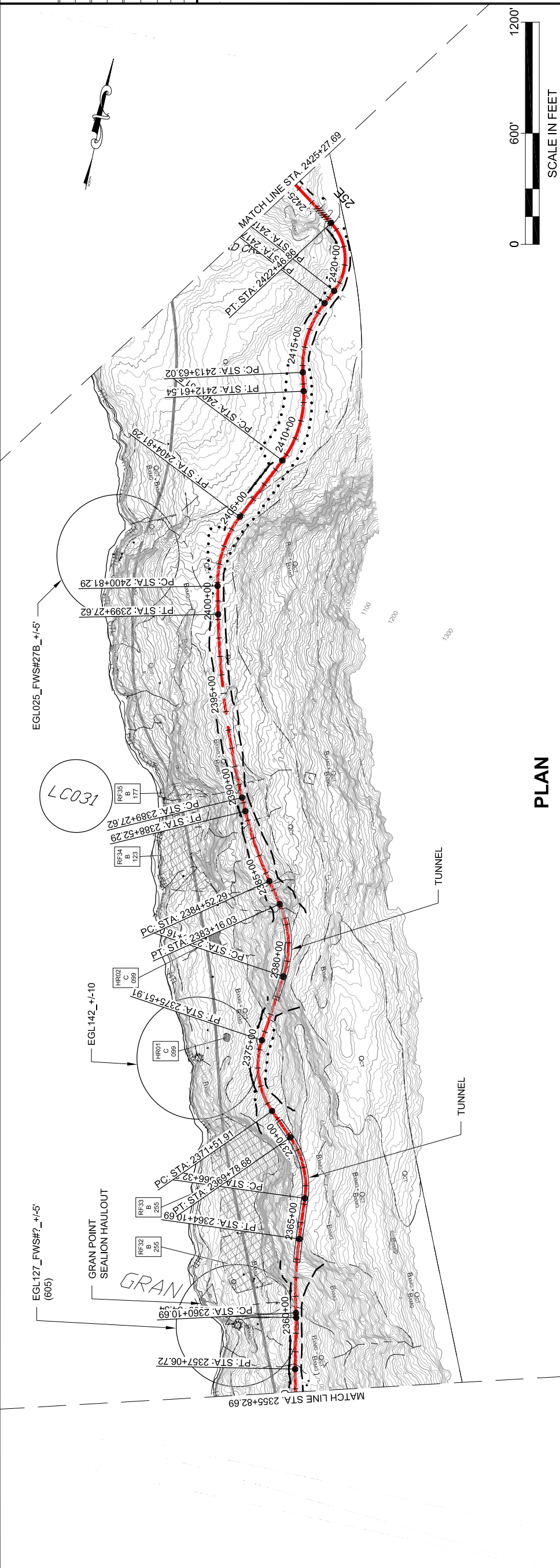
**DO NOT SCALE FROM THESE DRAWINGS USE DIMENSIONS**

*This page intentionally left blank.*

PATH: C:\UNITS\10\DRS\10-2012 EIS DWGSET\100\_2013 EIS  
 EAGLE, NATE (DOT)  
 TAB: EL33Friday, October 04, 2013 12:56:52 PM

RECORD OF REVISIONS		
NO.	DATE	DESCRIPTION

APPENDIX NUMBER  
 ATTACHMENT NUMBER



**PLAN**

**PLAN LEGEND**

CHECKED BY:  
 DESIGNED BY:  
 DRAWN BY:

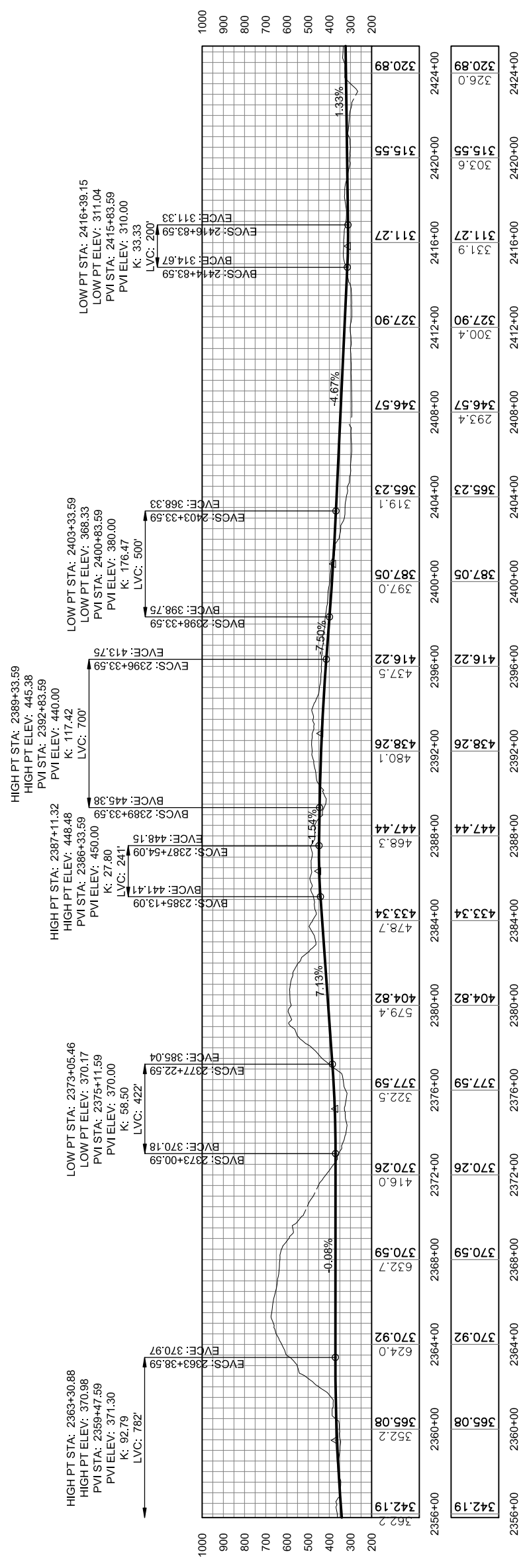
STATE OF ALASKA  
 DEPARTMENT OF TRANSPORTATION  
 & PUBLIC FACILITIES  
 SOUTHEAST REGION

JNU-EAST LYNN CANAL  
 HIGHWAY ALTERNATIVE 2B  
 PROJECT #71100

**2013 EIS**

**PLAN VIEW**

PROJECT DESIGNATION	71100
STATE	ALASKA
YEAR	2013
SHEET NUMBER	EL33
TOTAL SHEETS	38



**PROFILE**

DO NOT SCALE FROM THESE DRAWINGS USE DIMENSIONS

*This page intentionally left blank.*

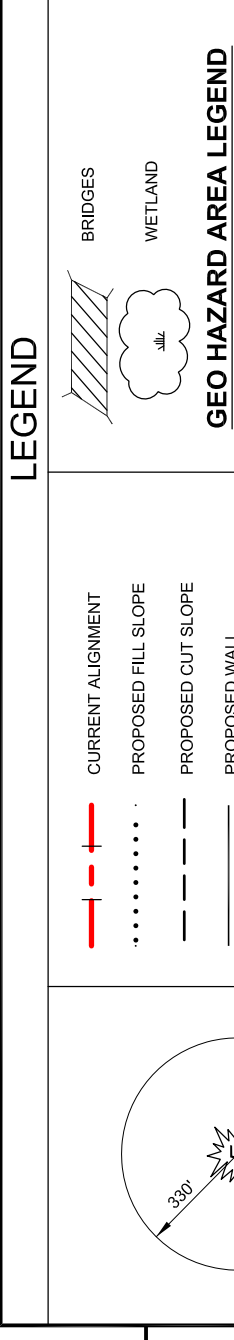
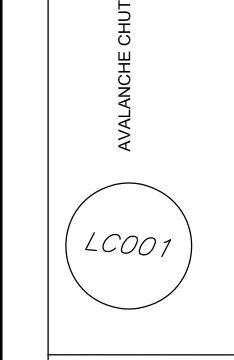
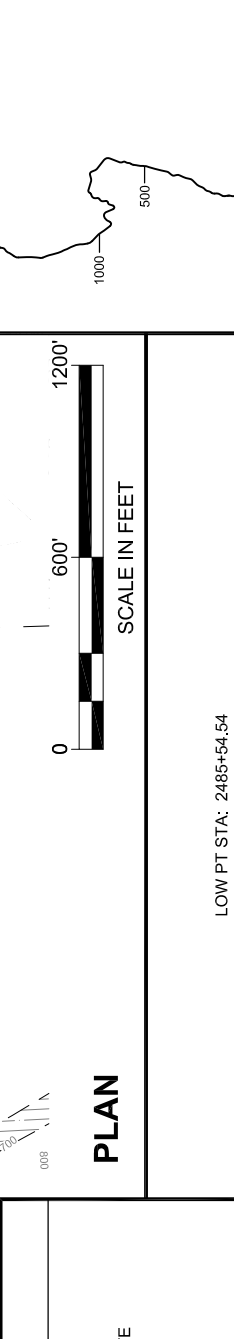
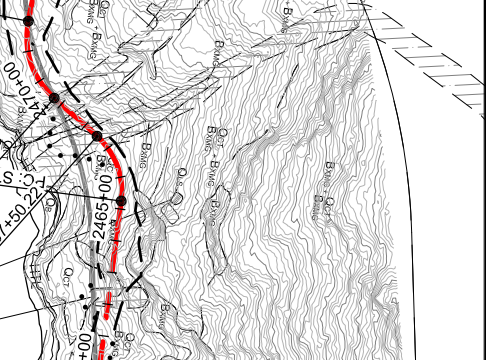
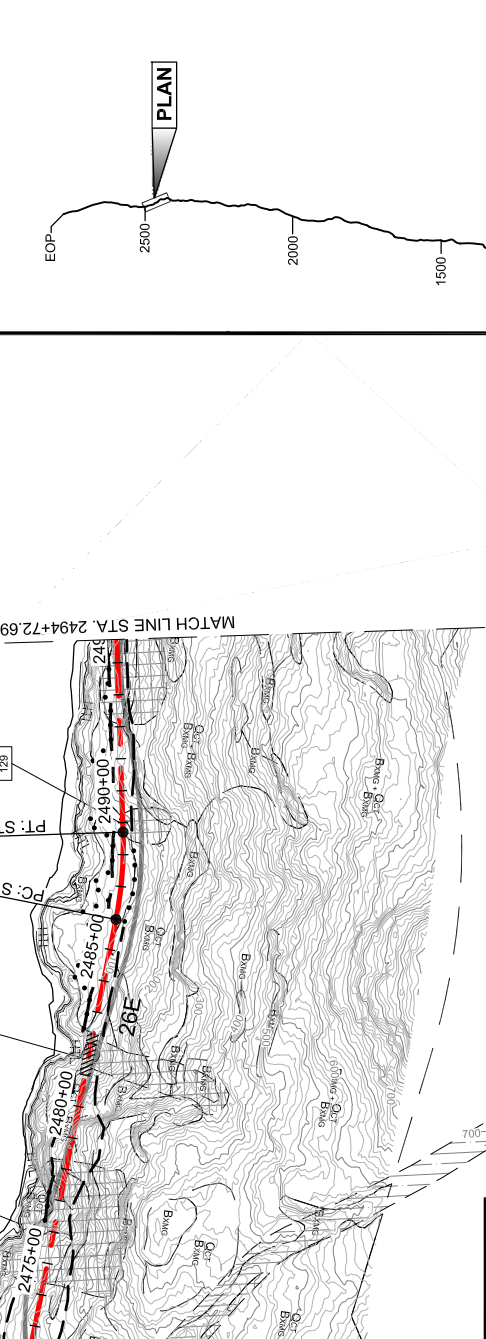
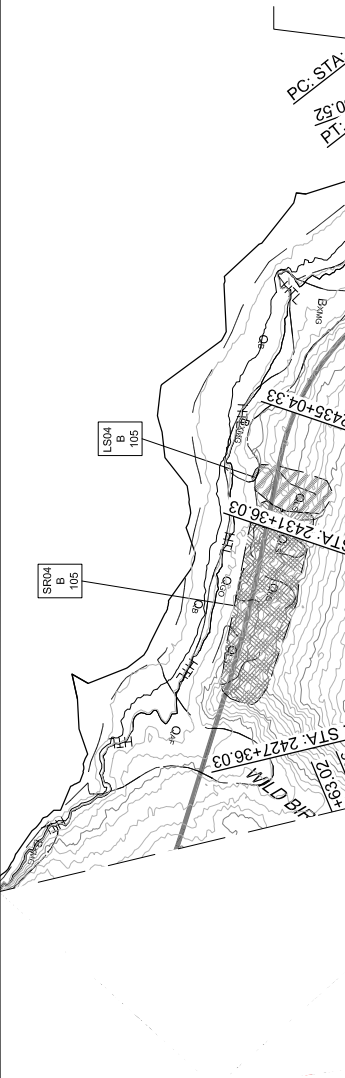
RECORD OF REVISIONS		
NO.	DATE	DESCRIPTION

APPENDUM NUMBER	
ATTACHMENT NUMBER	

PROJECT DESIGNATION	71100
STATE	ALASKA
YEAR	2013
SHEET NUMBER	EL34
TOTAL SHEETS	38

DESIGNED BY:  
 DRAWN BY:  
 STATE OF ALASKA  
 DEPARTMENT OF TRANSPORTATION  
 & PUBLIC FACILITIES  
 SOUTHEAST REGION  
 JUNU-EAST LYNN CANAL  
 HIGHWAY ALTERNATIVE 2B  
 PROJECT #71100

2013 EIS  
 PLAN VIEW



DO NOT SCALE FROM THESE DRAWINGS USE DIMENSIONS

PROFILE

Station	Elevation (ft)
2428+00	316.7
2432+00	326.22
2436+00	288.4
2440+00	264.19
2444+00	207.4
2448+00	200.9
2452+00	161.6
2456+00	123.5
2460+00	104.0
2464+00	181.0
2468+00	117.6
2472+00	188.2
2476+00	130.00
2480+00	124.72
2484+00	105.4
2488+00	87.6
2492+00	116.64

*This page intentionally left blank.*

RECORD OF REVISIONS	
NO.	DESCRIPTION

ATTACHMENT NUMBER	

APPENDUM NUMBER	

STATE	
ALASKA	2013

PROJECT DESIGNATION	
71100	2013

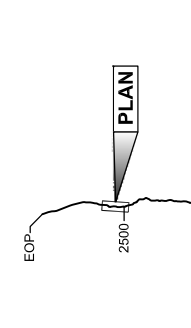
SHEET NUMBER	
EL35	38

TOTAL SHEETS	
EL35	38

PROJECT DESIGNATION	
71100	2013

STATE	
ALASKA	2013

SHEET NUMBER	
EL35	38



**PLAN LEGEND**

CHECKED BY:

DESIGNED BY:  
DRAWN BY:

STATE OF ALASKA  
DEPARTMENT OF TRANSPORTATION  
& PUBLIC FACILITIES  
SOUTHEAST REGION

JNU-EAST LYNN CANAL  
HIGHWAY ALTERNATIVE 2B  
PROJECT #71100

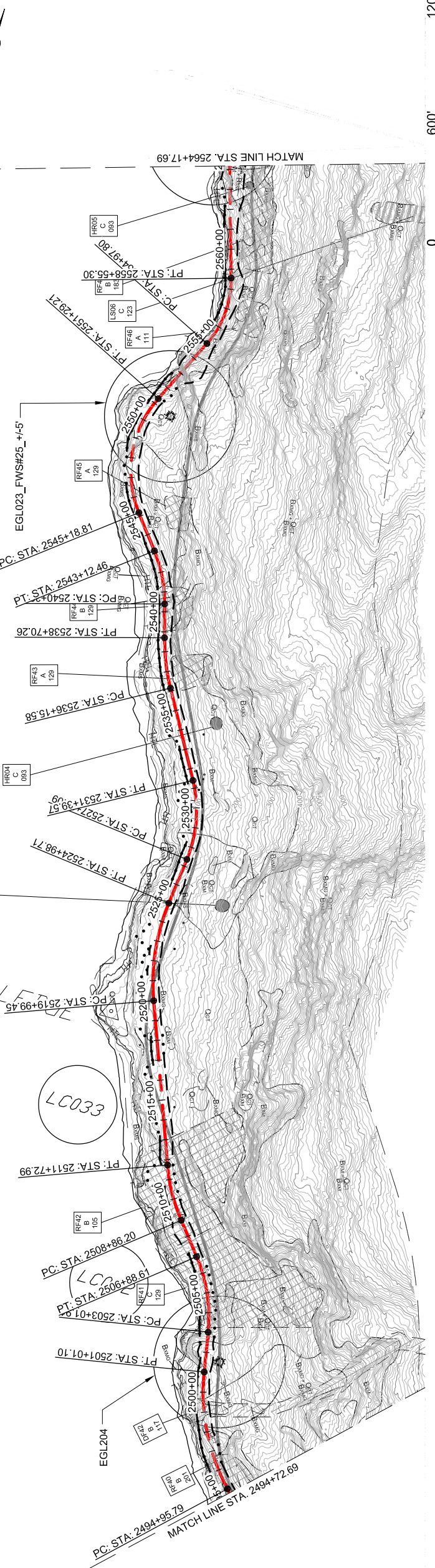
**2013 EIS  
PLAN VIEW**

PROJECT DESIGNATION	
71100	2013

STATE	
ALASKA	2013

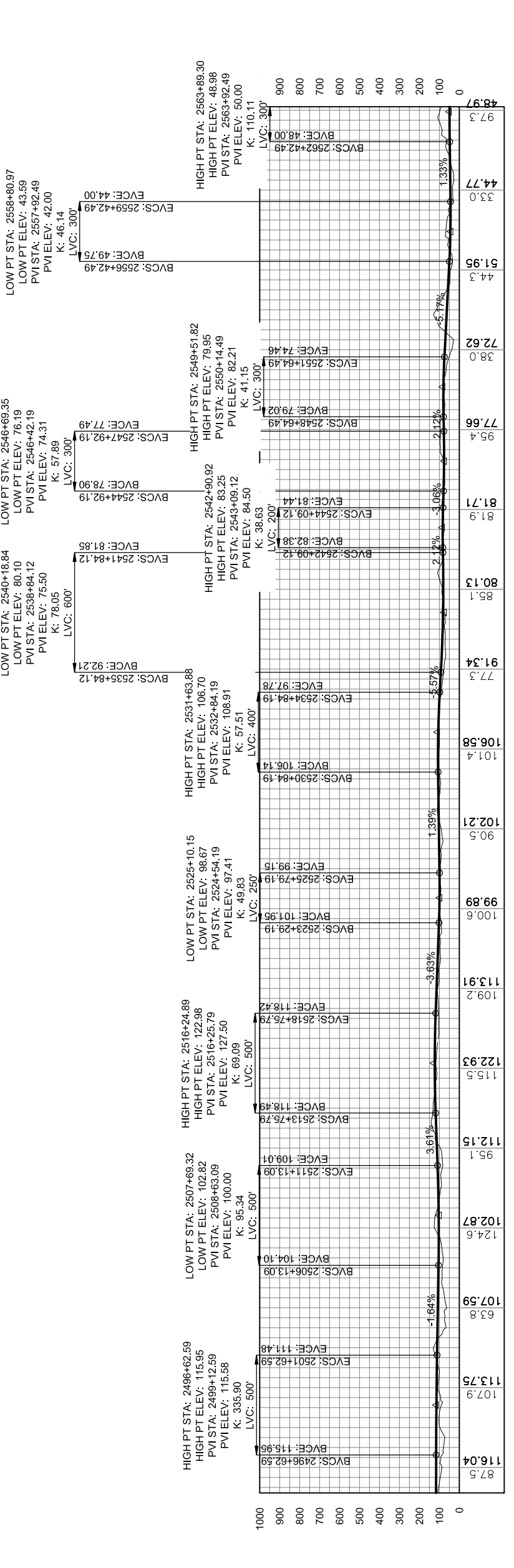
SHEET NUMBER	
EL35	38

TOTAL SHEETS	
EL35	38



**PLAN**

SCALE IN FEET



**PROFILE**

DO NOT SCALE FROM THESE DRAWINGS USE DIMENSIONS

*This page intentionally left blank.*