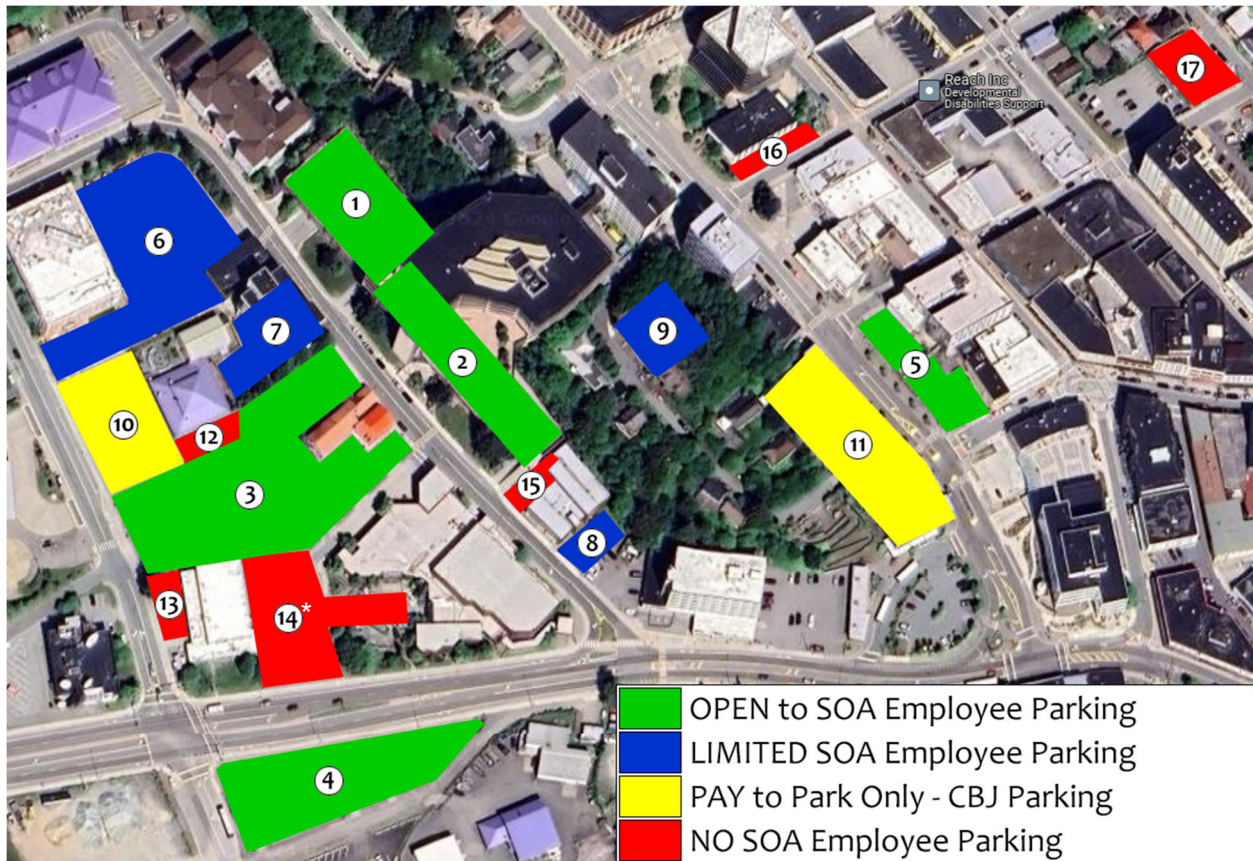


# Juneau Core Area Parking Map



## **1. State Office Building North Garage**

Refer to detailed SOB Parking Garage Map

## **2. State Office Building South Garage**

Refer to detailed SOB Parking Garage Map

## **3. 2625 Lot**

99 spaces for SOA employee parking

## **4. Support Lot**

Open spaces for SOA employee parking

## **5. Front & Main Lot**

18 open spaces for SOA employees  
1 space reserved for accessible parking

## **6. 410 Willoughby Lot**

Parking reserved for building lease occupants only

## **7. 400 Willoughby Lot**

20 open spaces for DNR employee parking

## **8. Facilities Parking Lot**

11 assigned spaces for Facilities Center staff

## **9. Telephone Hill Lot**

Reserved parking for SOA officials (posted)  
Unavailable for SOA Employee parking

## **10. PSB Lot**

Pay parking available

## **11. DTC Garage**

Pay parking available

## **12. Zach Gordon Lot**

Unavailable for SOA employee parking

## **13. JACC Lot**

Reserved for JACC employee parking

## **14. New Centennial Hall Lot**

Unavailable for SOA employee parking except for 5 spaces\*

## **15. Facilities Loading Lot**

Unavailable for SOA employee parking

## **16. Community Building Lot**

Parking reserved for Community Building occupants

## **17. 2nd & Gold Lot**

21 spaces reserved for Legislative and Office of the Governor  
employee parking  
1 space reserved for accessible parking